



2017

2018

# ANNUAL REPORT

ONE DISTRICT: FORTY-THREE DIVERSE SCHOOLS



## VISION

KPBSD will inspire all learners to pursue their dreams in a rigorous, relevant, and responsive environment.

[www.KPBSD.org](http://www.KPBSD.org)

Connect on Mobile App, Facebook, Instagram, LinkedIn, Twitter, YouTube



## MESSAGE FROM SEAN DUSEK SUPERINTENDENT OF SCHOOLS

We are pleased to present KPBSD's 2017-2018 Annual Report. This publication is an opportunity to step back and review last year's accomplishments and highlights, celebrate areas of excellence, and share plans for the new school year.

Our district is on a journey of continuous improvement about how we meet the individual needs of every student. This journey includes preparing students to be ready for life through a rigorous, relevant, and responsive education. In order to accomplish this, we are improving how we personalize learning to provide a wide array of highly engaging experiences for all students. Students will take greater ownership of their learning and apply content outside of the classroom. Learning is a 24/7 endeavor; we will help students respond to the question, *What problem do you want to solve in your lifetime?*

I am honored to serve as KPBSD's superintendent and look forward to another excellent year as we support students throughout their educational journey in the Kenai Peninsula Borough School District.

*Sean Dusek*



**Our district wants every student to be a problem solver, a critical thinker, collaborative, and creative.**

**We will leverage technology to meet student strengths and interests.**

## STRATEGIC PLAN 2017-2022

The KPBSD will empower all learners to positively shape their future. We are committed to get our students ready for life through a rigorous, relevant, and responsive education, and refer to this commitment as the 4R's. The foundation is a strong, positive relationship with each individual student to facilitate a high quality, engaging educational experience. Within each principle are transformative concepts to support students to answer, *What problem will you solve in your lifetime?*

## DISTRICT GOALS

Our district goals in 2018-2019 will continue to support students to earn a meaningful diploma while making the educational experience more learner centered. Intentional instruction that promotes student reflection and student ownership of learning will be a focal point. We will continue to reach out to our community partners for relevant and engaging experiences to extend learning outside the classroom, as we support our students to become productive citizens in our communities.





## MESSAGE FROM PENNY VADLA PRESIDENT, KPBSD BOARD OF EDUCATION

The continued potential for student learning and growth is exciting in 2018-2019! Through a strong commitment to provide a quality educational experience for all students, our administrative staff and faculty work diligently to personalize learning. Personalized learning (PL) is the structuring of

schools, classrooms, and instruction so the school district can best respond to the individual needs of students. By phasing in personalized learning in a well-organized process, coupled with exemplary professional development opportunities and a strong culture of collaboration, the district paved the way for teachers to successfully move PL to the forefront of educational practices in the state.

Community engagement is essential for school districts. We encourage parents and stakeholders to become involved in our continued success. When the education of our children comes first, Alaska's future will always be bright. With the best interest of students at the heart of the work we do in the KPBSD, I am very optimistic 2018-2019 will be another exceptional school year!



*Penny Vadla*

## KPBSD BOARD OF EDUCATION

- Penny Vadla, *President*, District 4, Soldotna
- Zen Kelly, *Vice President*, District 9, South Peninsula
- Dan Castimore, *Clerk*, District 1, Kalifornsky
- Mike Illg, *Treasurer*, District 8, Homer
- Marty Anderson, District 5, Sterling/Funny River
- Debbie Cary, District 7, Kasilof/Central
- Lynn Hohl, District 6, Seward/East Peninsula
- Tim Navarre, District 2, Kenai
- Jason Tauriainen, District 3, Nikiski
- Calvin Mitzel, *Student Representative*

## GOALS 2018-2019

- Advocate for reliable education funding plan
- Strengthen positive relationships
- Support further development and implementation of school climate and safety plans

## SCHOOL BOARD MEETING DATES

July 9, 2018	January 14, 2019
August 6, 2018	February 11, 2019
September 10, 2018	March 4, 2019
(Homer)	April 8, 2019
October 15, 2018	May 6, 2019
November 5, 2018	(Seward)
December 3, 2018	June 3, 2019

In addition to the business meeting listed above, the Board will hold quarterly work sessions.

**The mission of the Kenai Peninsula Borough School District is to empower all learners to positively shape their futures.**



# PERSONALIZED LEARNING

PL is the structuring schools, classrooms, and instruction so we can better respond to the individual needs of students, instead of expecting students to fit a mold or adapt to structures that may not be successful for them. Key elements include:



## ■ Flexible Content and Tools

Instructional materials allow for differentiated path, pace, and performance tasks

## ■ Targeted Instruction

Instruction aligns to specific student needs and learning goals

## ■ Data Driven Decisions

Frequent data collection informs instructional decisions and groupings

## ■ Student Reflection and Ownership

Ongoing student reflection promotes ownership of learning



Visit the PL blog for videos, testimonials, stories, and FAQs:  
<http://pl.blogs.kpbsd.k12.ak.us/>

Preparing students to take initiative for their own learning begins with student ownership and reflection. Innovative classrooms provide opportunities for this to happen at every grade level in KPBSD. #PersonalizedLearning



### Flexible Content and Tools

Instructional materials allow for differentiated path, pace, and performance tasks



### Targeted Instruction

Instruction aligns to specific student needs and learning goals



### Student Reflection and Ownership

Ongoing student reflection promotes ownership of learning



### Data Driven Decisions

Frequent data collection informs instructional decisions and groupings

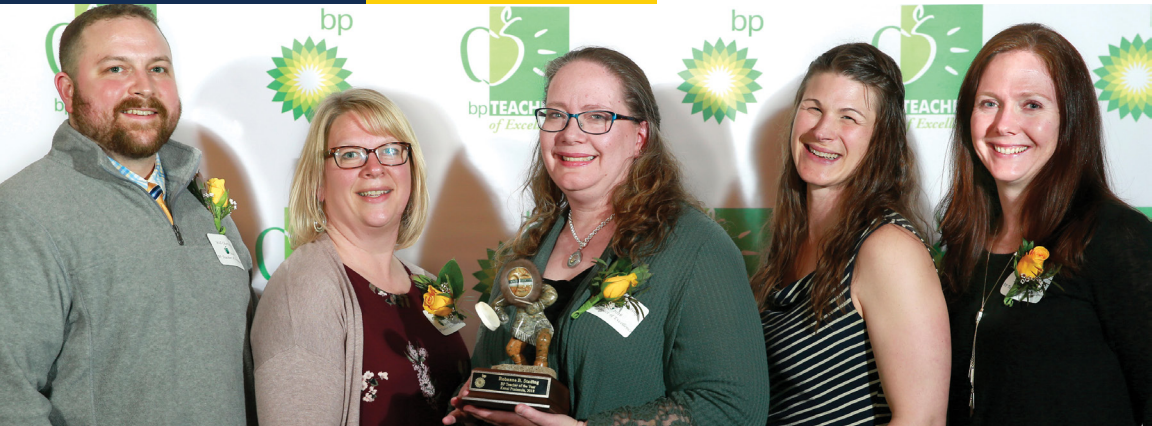
Where do you want your learning to take you and how can KPBSD help you get there?  
#PLinKPBSD

## KEY PERFORMANCE INDICATORS (KPI)

In the new five-year strategic plan, KPBSD moved away from using a single test score to measure how students' progress and achieve. Our students should be able to demonstrate their readiness at all grade levels in multiple ways beyond a standardized test score.



<http://bit.ly/KPIsKPBSD>



## BP TEACHERS OF EXCELLENCE

KPBSD celebrates Robanne Stading, 2018 Kenai BP Teacher of the Year, our five BP Teachers of Excellence, and the BP Educational Ally award recipient.



<http://bit.ly/2MNIR9B>

L-R: Wil Chervenak; Staci Wells; Robanne Stading; Carlyn Nichols; Jen Booz





**KPBSD AWARDED 553 HIGH SCHOOL DIPLOMAS IN 2017-2018!**

## KPBSD CLASS OF 2018 #AKlearns

Read expanded profile stories online <http://bit.ly/2KDaQMw>



**RACHEL DAVIDSON**

*Connections Homeschool*

<http://bit.ly/2NnKa03>



**AMBER BRIDGEMAN**

*Homer Flex School*

<http://bit.ly/2z5AQL2>



**ALEXANDREA MOSELEY**

*Homer High School*

<http://bit.ly/2z6B17V>

**Celebrate the graduation rate for students in special education:**  
“A graduation rate this high is not something seen in the state of Alaska, and is high for anywhere in the United States.”

<http://bit.ly/2MSNiQu>



**ISAIAH TREVINO**

*Kenai Alternative School*

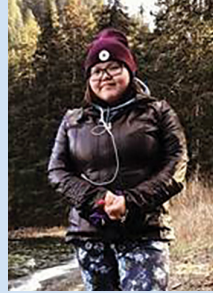
<http://bit.ly/2tVB4iU>



**BRITTANY GILMAN**

*Kenai Central High School*

<http://bit.ly/2MMg5pN>



**VERINA UKATISH**

*Nanwalek School*

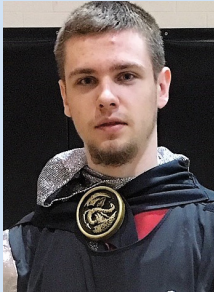
<http://bit.ly/2z6BF6D>



**KRISTIN ELISABETH KLAICH**

*Nikolaevsk School*

<http://bit.ly/2u39WfX>



**AARON MCCOLLUM**

*Nikiski Middle-High School*

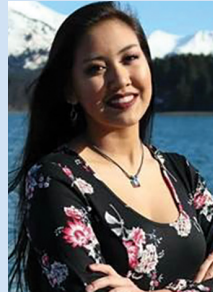
<http://bit.ly/2KHA9w1>



**OLIVIA DELGADO**

*Ninilchik School*

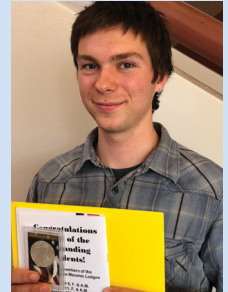
<http://bit.ly/21PR5f4>



**SUZANNE LABELLE**

*Port Graham School*

<http://bit.ly/2Msq6bv>



**JOSH SHULER**

*River City Academy*

<http://bit.ly/2tRmHfA>



**HELEANA BACKUS**

*Seward High School*

<http://bit.ly/2KwWwoG>



**JODE SPARKS**

*Soldotna High School*

<http://bit.ly/2KIR69v>



**DESMOND MOON**

*Tebughna School*

<http://bit.ly/2KLAfzR>



**DAVID SANAROV**

*Voznesenka School*

<http://bit.ly/2KLAj2z>



## AVERAGE YEARS OF EXPERIENCE WITH KPBSD

Teachers ..... **9 YEARS**  
Support staff ..... **8 YEARS**



## STUDENT NUTRITION SERVICES (SNS)

SNS served:

Lunches ..... **491,020**  
Breakfasts ..... **154,655**  
After School Snacks ..... **1,615**  
Total meals & snacks served **647,290**



## STAFFING RATIOS

### TYPE OF SCHOOL AND PUPIL-TEACHER-RATIO

**20.5:1** Elementary schools with more than 250 enrolled students: **KINDERGARTEN**

**22.5:1** Elementary schools with more than 250 enrolled students: **GRADES 1-3**

**24.5:1** Elementary schools with more than 250 enrolled students: **GRADES 4-6**

**19.5:1** Elementary small schools with 100 to 250 enrolled students: **GRADES K-6**

**25:1** **MIDDLE AND HIGH SCHOOLS**

**17.5:1** Small schools with less than 200 enrolled students: **GRADES K-6**

Small schools with less than 200 enrolled students: **GRADES 7-12**



## 2017-2018 ENROLLMENT

Preschool ..... **248**  
Kindergarten-6th grade ..... **4,773**  
7th-8th grade ..... **1,306**  
9th-12th grade ..... **2,568**  
2017-2018 school enrollment .. **8,895**



## PERSONNEL

District administration ..... **13**  
Building administration ..... **39**  
Certified staff ..... **653**  
Support staff ..... **489**  
Total ..... **1,194**

**#ThankYou TO 3,787 KPBSD SCHOOL VOLUNTEERS DURING 2017-2018!**



## HOMELESS

In May, 2018, **205** KPBSD students were identified as homeless and receiving services through our *Students In Transition* program.



## STUDENT TRANSPORTATION

Every school day, more than **4,491** students are transported a total of nearly **7,741** miles on school buses throughout the district.



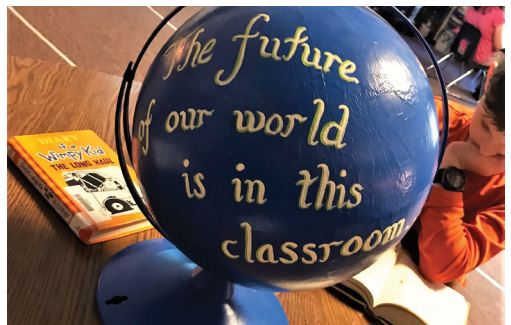
## DISTRICT SIZE

The school district has a total of **43** schools and at **25,600** square miles covers a land area roughly the size of West Virginia.



## DOLLARS & CENTS

\$0.74 Salaries and benefits  
\$0.05 TRS/PERS On-Behalf  
\$0.07 Discretionary accounts  
\$0.08 In-kind services  
\$0.05 Utilities  
\$0.01 Transfers  
= \$1.00 from 2017-2018 General Fund







Do you wonder how to understand challenges that individuals with disabilities face and overcome on a daily basis? Solution: create a disability awareness day with experts providing interactive stations for staff and students to learn about physical and cognitive disabilities.



<http://bit.ly/2MOXwRQ>

**Supreme Court Live** fosters understanding of the justice system at Kenai Central High School; 375 students from six high schools hear oral arguments in ***State of Alaska v. Alaska Democratic Party***, followed by questions and responses.



<http://bit.ly/2KRwJUu>

**Upstream Academy** increases STEM awareness and readiness among middle school students, especially for young people from underserved populations. Thank you to Andeavor for a grant to make these programs possible.



<https://www.facebook.com/UpstreamAcademyKenaiPeninsula/>

**Sources of Strength (SOS)** is a comprehensive wellness program focusing on suicide prevention, and also addresses substance abuse and violence. Teams of peer leaders mentored by adult advisors change peer social norms about seeking help, and encourage students to individually assess and develop strengths in their life. SOS is now in seven high schools, and in fall 2018, extends to Kenai Central High School.



<http://bit.ly/2zgwP6Q>

**#KindnessCounts** when hockey players assist wounded man in Anchorage: "I witnessed an amazing act on Friday, November 3, 2017." -Steve Nevak, assistant coach, Homer High Mariner hockey



<http://bit.ly/2KRWjsD>



# 2017-2018 LEADERSHIP TEAM

- Sean Dusek, Superintendent
- Dave Jones, Assistant Superintendent, Instructional Support
- John O'Brien, Assistant Superintendent, Instruction
- Pegge Erkeneff, Communications Liaison
- Christine Ermold, Human Resources and Professional Development Director
- Elizabeth Hayes, Finance Director
- Clayton Holland, Pupil Services Director
- David May, Planning and Operations Director
- John Pothast, Elementary and Secondary Education Director
- Eric Soderquist, Information Services Director
- Tim Vlasak, K-12 Schools, Curriculum, Assessment, and Federal Programs Director



## KENAI PENINSULA BOROUGH SCHOOL DISTRICT

148 North Binkley Street, Soldotna, Alaska 99669  
 907.714.8888 | fax: 907.262.9645 | kpbsd.k12.ak.us

YouTube: @KPBSDvideos | Facebook: KPBSD | Twitter: @KPBSD  
 LinkedIn: Kenai Peninsula Borough School District



**Look for this symbol to read expanded online stories.**



<http://bit.ly/AnnualReportFY18KPBSD>

## KPBSD KEY COMMUNICATORS

A network of parents, community members, students, and staff interested in schools collaborate to cultivate positive relationships with the school district and in our diverse communities. Become involved, share your story, and connect during Facebook Live events, coffee with the superintendent, community outreach, and more. Call or inquire online.



<http://bit.ly/KeyCommunicators>