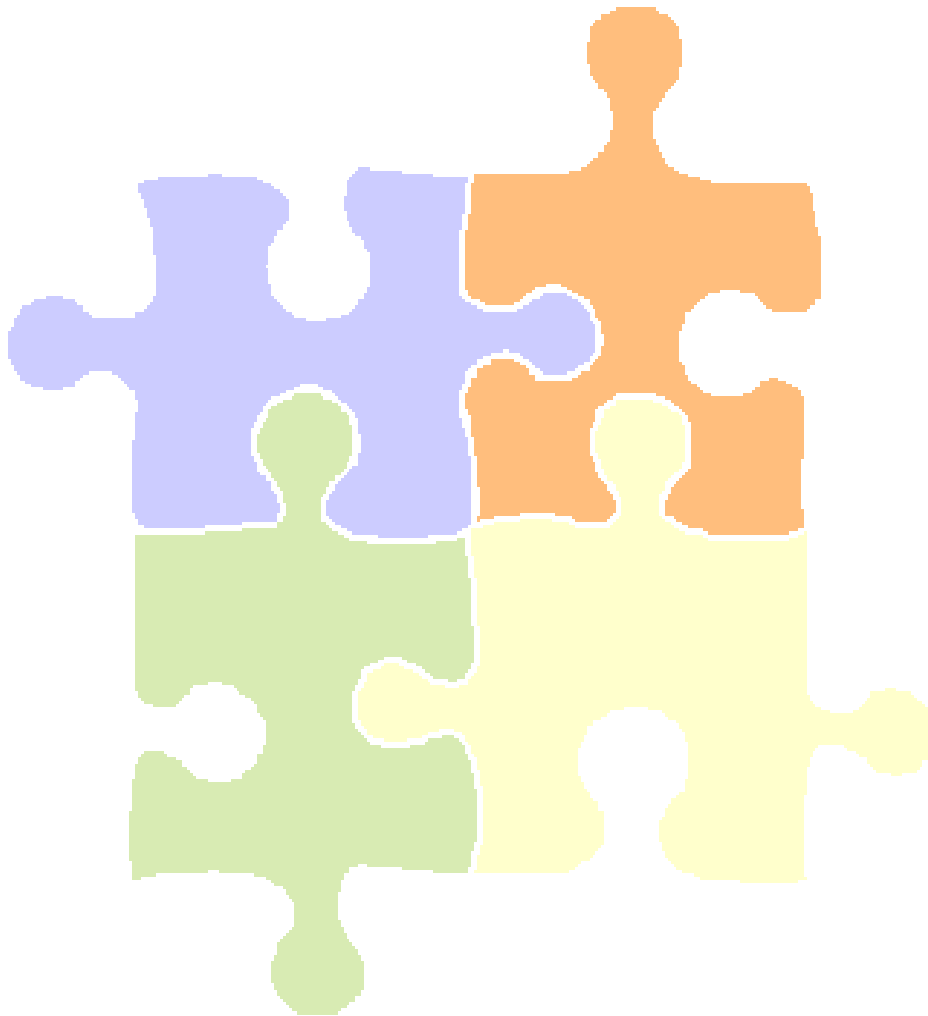


KENAI PENINSULA BOROUGH SCHOOL DISTRICT

Click Puzzle for Table of Contents



Revised April 2004

SIX YEAR ENROLLMENT PROJECTIONS
2004-05 through 2009-10

Introduction

The Kenai Peninsula Borough Board of Education is responsible for providing an adequate educational environment for the students of the Kenai Peninsula Borough School District. To fulfill this obligation, the Board regularly reviews the District's long-range plan. On an annual basis, the School Board adopts a six year enrollment projection that addresses the anticipated levels of student enrollment and shifts in enrollment.

Building administrators and information from other sources (like the Child Find and Head Start programs) help determine the projected number of incoming kindergartners at each school. Once estimates have been made for the incoming kindergarten class, the other peer groups are rolled forward to the next grade. Administration also takes into consideration historical trends, economic variables and other available information in the projection.

This narrative is divided into two sections:

- School Facilities and Educational Structure
- Population Growth and Projections for FY05 through FY10

Charts and data providing detailed membership projections, graphs of demographic facts related to the student population and other information are included in each section. Birth data has been collected from the State of Alaska Department of Public Health, Vital Statistics Section and additional census data has been collected from the 2000 Federal Census.

The process used to project the FY05 enrollment is based on a straight-line projection as of October 1, 2003, less two percent in keeping with the historical decline in enrollment at the school level. The steps involved were:

1. Grades at all school sites were reduced by 2% and moved ahead one grade level (except charter schools).
2. Sites affected by feeder schools were adjusted appropriately.
3. Kindergarten enrollment was based on the average of actual enrollment, including pre-school students, for FY02, FY03 and FY04 and administrator recommendation.
4. AR 6183 (c) notes the enrollment for Homer Flex, Kenai Alternative, Kenai Youth Facility and Spring Creek locations.
5. Site administrative review of draft enrollment projection.

Nikiski Elementary and North Star Elementary have been consolidated.

The District was required to submit the FY05 enrollment projection to the Department of Education and Early Development by November 7, 2003.



Kenai Peninsula Borough School District Schools

Area	School Name	Configuration	Capacity
Homer Area	Chapman	K-8	225
	Fireweed Academy	K-7	*
	Homer Flex	9-12	75
	Homer High	9-12	600
	Homer Middle	7-8	375
	Kachemak Selo	K-12	100
	McNeil Canyon	K-6	250
	Nikolaevsk	K-12	250
	Ninilchik	K-12	400
	Paul Banks	K-3	350
	Razdolna	K-10	50
	Voznesenka	K-12	150
	West Homer Elem	3-6	500
	Kenai Area	Aurora Borealis Charter	K-8
Kenai Alternative		9-12	125
Kenai Central		9-12	800
Kenai Middle		6-8	550
Mountain View		3-5	500
Sears		K-2	500
Nikiski Area	Nikiski Elem	K-6	500
	Nikiski Middle/Senior	7-12	600
	North Star	K-6	500
Seward Area	Moose Pass	K-8	65
	Seward Elem	K-6	500
	Seward High	9-12	400
	Seward Middle	7-8	300
	Spring Creek	PS-12	55
Soldotna Area	Cooper Landing	K-8	50
	K-Beach	K-6	500
	Montessori Charter	K-5	*
	Redoubt	K-6	500
	Skyview	9-12	600
	Soldotna Elem	K-6	550
	Soldotna High	9-12	800
	Soldotna Middle	7-8	550
	Sterling	K-6	325
	Tustumena	K-6	400
Other Locations	Connections	K-12	**
	Hope	K-12	100
	Kenai Youth Facility	K-12	10
	Nanwalek	K-12	50

Port Graham
Susan B English
Tebughna

K-10
K-12
K-12

50
200
125



**Six Year Enrollment Projections
2004-2005 through 2009-10
Table of Contents**

	Page
Introduction	
Introduction	1
List of KPBSD Schools	2
Facilities and Educational Structure	3-4
Individual School Enrollments	
FY05 Projected Enrollment	5
Aurora Borealis Charter School	6
Bayview Charter School	7
Beluga School	8
Chapman School	9
Connections	10
Cooper Landing School	11
Fireweed Academy Charter School	12
Homer Flex High School	13
Homer High School	14
Homer Intermediate School	15
Homer Middle School	16
Hope School	17
Kachemak Selo	18
Kaleidoscope Charter School	19
K-Beach Elementary School	20
Kenai Alternative High School	21
Kenai Central High School	22
Kenai Middle School	23
Kenai Youth Facility	24
McNeil Canyon Elementary School	25
Montessori Charter School	26
Moose Pass School	27
Mountain View Elementary School	28
Nanwalek School	29

<u>Nikiski Elementary School</u>	<u>30</u>
<u>Nikiski Middle/Senior High School</u>	<u>31</u>
<u>Nikiski North Star Elementary School</u>	<u>32</u>
<u>Nikolaevsk School</u>	<u>33</u>
<u>Ninilchik School</u>	<u>34</u>
<u>Paul Banks Elementary School</u>	<u>35</u>
<u>Port Graham School</u>	<u>36</u>
<u>Razdolna School</u>	<u>37</u>
<u>Redoubt Elementary School</u>	<u>38</u>
<u>Sears Elementary School</u>	<u>39</u>
<u>Seward Elementary School</u>	<u>40</u>
<u>Seward High School</u>	<u>41</u>
<u>Seward Middle School</u>	<u>42</u>
<u>Skyview High School</u>	<u>43</u>
<u>Soldotna Elementary School</u>	<u>44</u>
<u>Soldotna High School</u>	<u>45</u>
<u>Soldotna Middle School</u>	<u>46</u>
<u>Spring Creek School</u>	<u>47</u>
<u>Sterling Elementary School</u>	<u>48</u>
<u>Susan B English School</u>	<u>49</u>
<u>Tebughna School</u>	<u>50</u>
<u>Tustumena Elementary School</u>	<u>51</u>
<u>Voznesenka School</u>	<u>52</u>
<u>West Homer Elementary School</u>	<u>53</u>

Current Year and Projected Enrollments

<u>FY05 Projected Enrollment</u>	<u>54</u>
<u>FY06 Enrollment Projection</u>	<u>55</u>
<u>FY07 Enrollment Projection</u>	<u>56</u>
<u>FY08 Enrollment Projection</u>	<u>57</u>
<u>FY09 Enrollment Projection</u>	<u>58</u>
<u>FY10 Enrollment Projection</u>	<u>59</u>

OASIS (On-line Alaska School Information System)

<u>OASIS Information</u>	<u>60</u>
<u>FY04 Actual Enrollment compared to OASIS</u>	<u>61</u>

Information

<u>FY04 Actual Enrollment by Location and Grade</u>	<u>62</u>
<u>History and Projected Enrollment by Year</u>	<u>63</u>
<u>Enrollment History by Site</u>	<u>64</u>
<u>Enrollment Projection by Site</u>	<u>65</u>
<u>Enrollment Projection by Area</u>	<u>66</u>
<u>Borough Population 1960 to 2000</u>	<u>67</u>
<u>Private Schools</u>	<u>68</u>
<u>Borough Population Growth</u>	<u>69</u>

School Facilities and Educational Structure

The Kenai Peninsula Borough School District operates 43 facilities, housing 9,562 students (FY04 OASIS school enrollment) and 1,092 FTE staff.

There are a variety of configurations, depending on community location and population. Schools are divided into four categories for the certified staffing formula, with further divisions for the support staffing formula. The four categories specified by the certified staffing formula are:

1. High School/Middle School with population greater than 100:

Homer High	Seward High
Homer Middle	Seward Middle
Kenai Central High	Skyview High
Kenai Middle	Soldotna High
Nikiski Middle/Senior High	Soldotna Middle

2. Elementary Schools K – 6 with population greater than 200:

K-Beach	Sears
Mountain View	Seward
Paul Banks	Soldotna
Redoubt	West Homer

3. Small Schools with population less than 200:

Chapman	Ninilchik
Cooper Landing	North Star*
Hope	Port Graham
Kachemak Selo	Razdolna
McNeil Canyon	Sterling
Moose Pass	Susan B. English
Nanwalek	Tebughna
Nikiski*	Tustumena
Nikolaevsk	Voznesenka

4. Other Programs:

Homer Flex High	Kenai Youth Facility
Kenai Alternative High	Spring Creek
Connections	

*North Star and Nikiski Elementary Schools will be consolidated starting with the FY05 school year.

Special Education services are offered in all elementary and secondary schools in the District.

There are three charter schools in the district: Aurora Borealis Charter School is organized K-8, Fireweed Academy Charter School is organized 3-7 and Montessori Charter School is organized by age, but lists enrollment in grades K-6. Charter schools are not included in the staffing formulas because they do not follow the formulas.

Homer Flex and Kenai Alternative are schools that offer alternative programs within their communities for completion of high school. Kenai Youth Facility and Spring Creek are high school programs in secure facilities operated in conjunction with the Department of Corrections. Spring Creek is the first high school program in the United States located in a maximum security prison.

Elementary schools feed into middle schools and middle schools feed into high schools. The following listing shows the elementary schools that are located within each middle school attendance area:

Homer Middle School

Chapman
Paul Banks
West Homer
McNeil Canyon

Kenai Middle School

K-Beach
Mountain View

Nikiski Middle School

North Star

Soldotna Middle School

Cooper Landing
K-Beach
Mountain View
Redoubt
Soldotna
Sterling
Tustumena

Seward Middle School

Hope
Moose Pass
Seward

Schools not involved in Middle School Feeder System

Aurora Borealis
Connections
Fireweed Academy
Kachemak Selo
Montessori Charter
Nikolaevsk

Ninilchik
Port Graham
Susan B. English
Tebughna
Voznesenka



FY05 ENROLLMENT PROJECTIONS

	Pre K	K	1	2	3	4	5	6	7	8	9	10	11	12	Projection	FY04	Difference
Aurora Borealis	0	13	23	22	24	24	24	22	18	18	0	0	0	0	188	171	17
Chapman	0	15	22	17	13	13	15	22	13	16	0	0	0	0	146	144	2
Connections	0	33	41	38	25	34	32	23	34	51	52	31	54	52	500	506	(6)
Cooper Landing	0	2	1	2	2	2	2	1	2	0	0	0	0	0	14	13	1
Fireweed Academy	0	0	0	0	6	9	9	10	0	0	0	0	0	0	34	30	4
Homer Flex	0	0	0	0	0	0	0	0	0	0	6	11	15	18	50	38	12
Homer High	0	0	0	0	0	0	0	0	0	0	115	133	106	95	449	461	(12)
Homer Middle	0	0	0	0	0	0	0	0	112	123	0	0	0	0	235	229	6
Hope	0	2	2	1	1	2	1	3	4	2	0	3	1	0	22	20	2
Kachemak Selo	0	7	7	10	9	6	10	5	7	8	7	3	5	1	85	83	2
Kaleidoscope	0	0	44	26	18	0	0	0	0	0	0	0	0	0	88	0	88
K-Beach	0	52	55	66	57	53	56	72	0	0	0	0	0	0	411	440	(29)
Kenai Alternative	0	0	0	0	0	0	0	0	0	0	17	24	21	23	85	77	8
Kenai Central High	0	0	0	0	0	0	0	0	0	0	122	146	124	128	520	502	18
Kenai Middle	0	0	0	0	0	0	0	107	130	117	0	0	0	0	354	376	(22)
Kenai Youth Facility	0	0	0	0	0	0	0	0	1	1	2	2	2	2	10	10	0
McNeil Canyon	0	17	21	21	14	10	13	15	0	0	0	0	0	0	111	113	(2)
Montessori Charter	0	25	27	27	10	17	3	2	0	0	0	0	0	0	111	89	22
Moose Pass	0	4	4	3	3	6	4	5	2	4	0	0	0	0	35	33	2
Mountain View	0	0	0	0	85	108	116	0	0	0	0	0	0	0	309	337	(28)
Nanwalek	0	4	3	7	7	3	4	9	5	6	4	6	2	4	64	63	1
Nikiski Elementary	0	0	0	0	0	0	0	0	0	0	0	0	0	0	0	179	(179)
Nikiski North Star	0	37	37	57	38	64	71	74	0	0	0	0	0	0	378	224	154
Nikiski Middle/ Senior	0	0	0	0	0	0	0	0	55	78	74	72	66	73	418	476	(58)
Nikolaevsk	0	6	6	6	7	5	3	4	8	8	7	12	7	9	88	89	(1)
Ninilchik	0	7	10	2	5	9	13	12	20	15	29	15	17	15	169	181	(12)
Paul Banks	0	60	58	84	0	0	0	0	0	0	0	0	0	0	202	214	(12)
Port Graham	0	2	2	1	2	2	2	3	0	7	6	2	0	0	29	30	(1)
Razdolna	0	4	5	2	4	2	4	5	2	4	2	2	3	0	39	36	3
Redoubt	0	50	42	61	53	54	58	59	0	0	0	0	0	0	377	407	(30)
Sears	0	110	57	67	0	0	0	0	0	0	0	0	0	0	234	302	(68)
Seward Elem	0	43	41	50	37	47	40	43	0	0	0	0	0	0	301	323	(22)
Seward High	0	0	0	0	0	0	0	0	0	0	64	63	51	66	244	274	(30)
Seward Middle	0	0	0	0	0	0	0	0	56	62	0	0	0	0	118	116	2
Skyview	0	0	0	0	0	0	0	0	0	0	136	136	142	130	544	556	(12)
Soldotna Elem	0	51	30	32	33	40	39	54	0	0	0	0	0	0	279	292	(13)
Soldotna High	0	0	0	0	0	0	0	0	0	0	136	152	139	108	535	516	19
Soldotna Middle	0	0	0	0	0	0	0	0	280	266	0	0	0	0	546	536	10
Spring Creek	0	0	0	0	0	0	0	0	0	0	20	10	13	12	55	37	18
Sterling	0	24	22	24	14	29	27	36	0	0	0	0	0	0	176	203	(27)
Susan B English	0	6	8	3	3	2	2	1	9	7	4	10	8	3	66	73	(7)
Tebughna	0	7	3	3	6	3	4	4	5	6	1	4	0	0	46	40	6
Tustumena	0	21	18	20	29	31	30	26	0	0	0	0	0	0	175	205	(30)

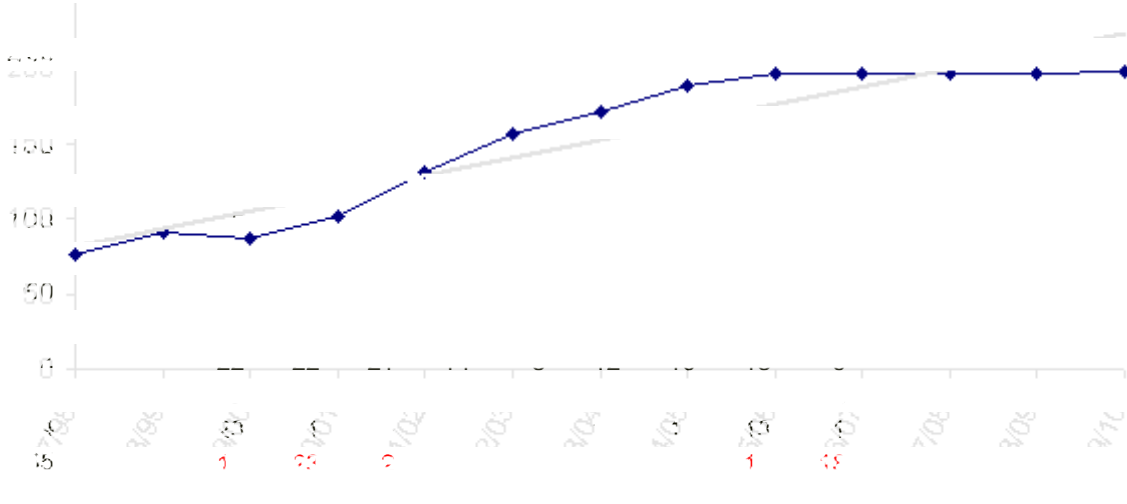
Voznesenka	0	4	5	13	10	11	14	11	8	12	13	12	14	9	136	138	(2)
West Homer	0	0	0	0	60	63	66	65	0	0	0	0	0	0	254	285	(31)
	0	606	594	665	575	649	662	693	771	811	817	849	790	748	9230	9467	(237)

Revised April 2004



AURORA BOREALIS

TOTAL # Change% Change



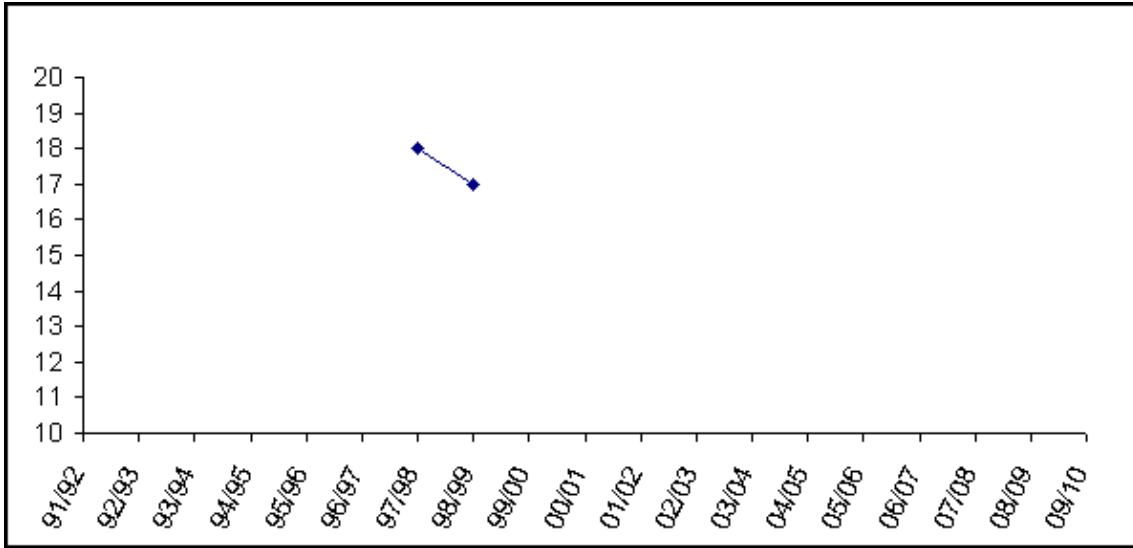
TOTAL	#	Change	% Change
	76		
	91	15	19.7%
	87	-4	-4.4%
	102	15	17.2%
	131	29	28.4%
	156	25	19.1%
	171	15	9.6%
	188	17	9.9%
	197	9	4.8%
06/07	197	0	0.0%
07/08	197	0	0.0%
08/09	197	0	0.0%
09/10	198	1	0.5%

Charter schools in the district are housed according to the terms of their contract, which is based on available space in existing facilities. Aurora Borealis is currently housed in the old Kenai Elementary building.



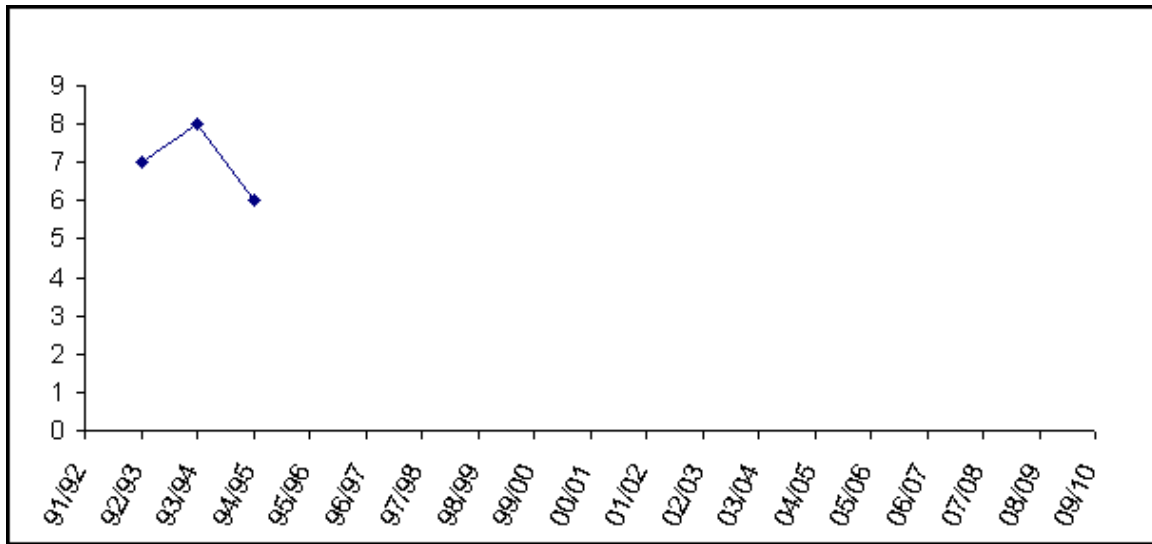
BAYVIEW SCHOOL

YEAR	PRE-K	K	1	2	3	4	5	6	7	8	9	10	11	12	TOTAL	# Change	% Change
91/92																	
92/93																	
93/94																	
94/95																	
95/96																	
96/97																	
97/98			7	4	5	2									18		
98/99		3	3	3	2	3	3								17	-1	-5.6%
99/00																	
00/01																	
01/02																	
02/03																	
03/04																	
04/05																	
05/06																	
06/07																	
07/08																	
08/09																	
09/10																	

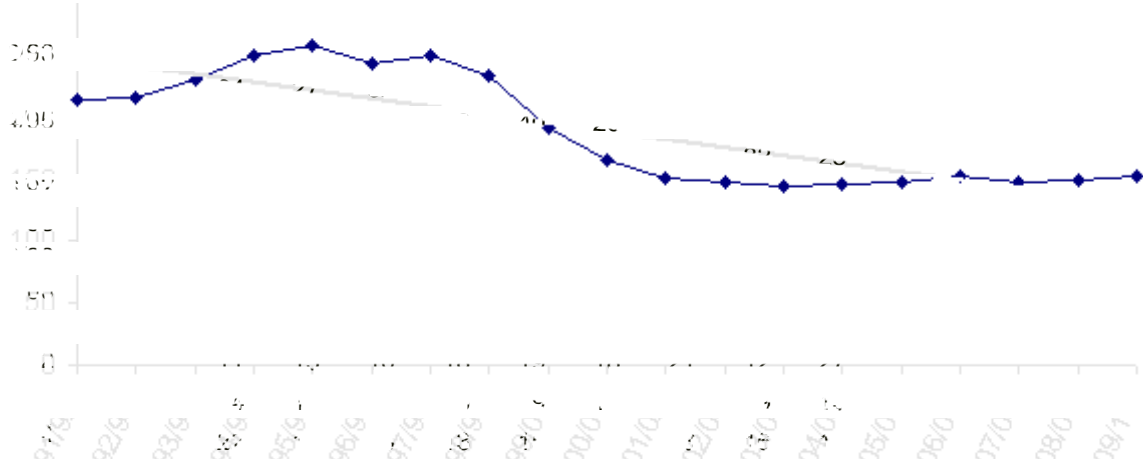


BELUGA SCHOOL

YEAR	PRE-K	K	1	2	3	4	5	6	7	8	9	10	11	12	TOTAL	# Change	% Change
91/92																	
92/93		1	0	0	2	1	1	1	0	0	1	0	0	0	7	7	
93/94		0	0	0	2	1	1	1	2	0	0	1	0	0	8	1	14.3%
94/95		0	1	0	0	0	1	0	1	2	0	0	1	0	6	-2	-25.0%
95/96																	
96/97																	
97/98																	
98/99																	
99/00																	
00/01																	
01/02																	
02/03																	
03/04																	
04/05																	
05/06																	
06/07																	
07/08																	
08/09																	
09/10																	



CHAPMAN SCHOOL



TOTAL # Change% Change

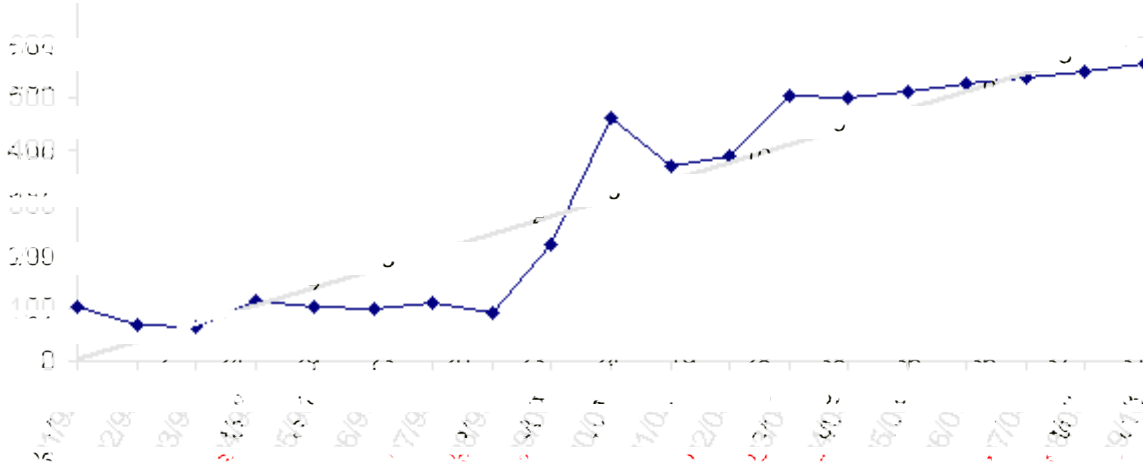
214		
215	1	0.5%
231	16	7.4%
250	19	8.2%
258	8	3.2%
244	-14	-5.4%
250	6	2.5%
233	-17	-6.8%
191	-42	-18.0%
165	-26	-13.6%
151	-14	-8.5%
148	-3	-2.0%
144	-4	-2.7%
146	2	1.4%
147	1	0.7%
152	5	3.4%
147	-5	-3.3%
149	2	1.4%
153	4	2.7%

05/06	17	15	22	17	13	13	15	22	13	147	1	0.7%
06/07	18	17	15	22	17	13	13	15	22	152	5	3.4%
07/08	17	18	17	15	22	17	13	13	15	147	-5	-3.3%
08/09	17	17	18	17	15	22	17	13	13	149	2	1.4%
09/10	17	17	17	18	17	15	22	17	13	153	4	2.7%

Building Capacity	225	
<u>FY03</u>	<u>FY04</u>	<u>FY05</u>
148	144	146
66%	64%	65%



Connections



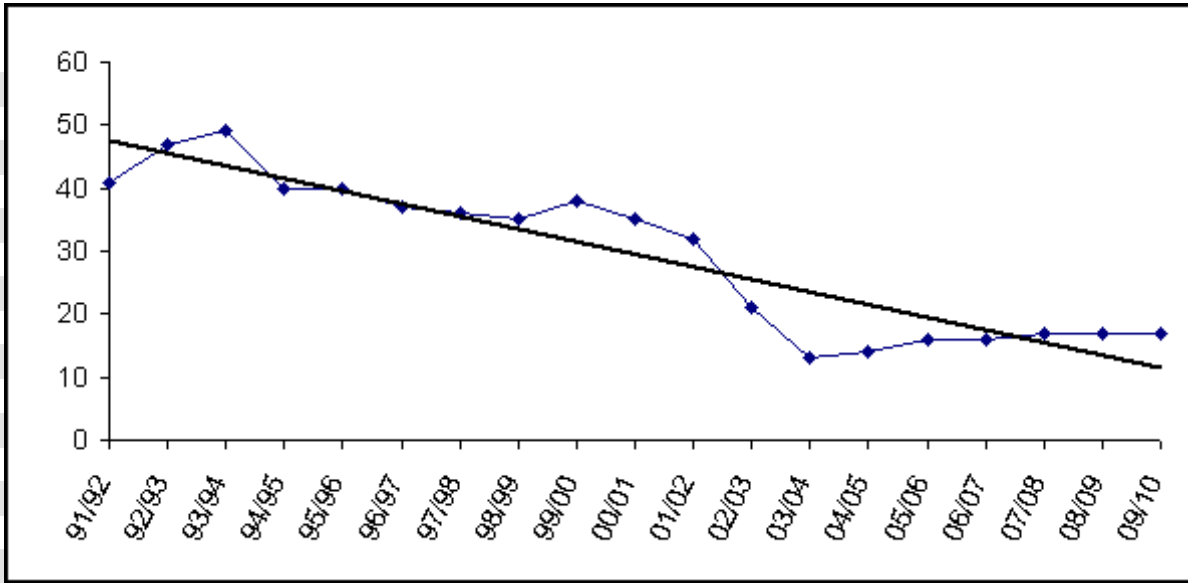
TOTAL	# Change	% Change
102		
70	-32	-31.4%
66	-4	-5.7%
114	48	72.7%
104	-10	-8.8%
98	-6	-5.8%
112	14	14.3%
92	-20	-17.9%
221	129	140.2%
462	241	109.0%
370	-92	-19.9%
392	22	5.9%
506	114	29.1%
500	-6	-1.2%
513	13	2.6%
526	13	2.5%
539	13	2.5%
552	13	2.4%
565	13	2.4%

06/07	34	42	33	28	35	33	24	35	52	53	32	55	53	513	13	2.6%
06/07	35	43	40	27	36	34	25	36	53	54	33	56	54	526	13	2.5%
07/08	36	44	41	28	37	35	26	37	54	55	34	57	55	539	13	2.5%
08/09	37	45	42	29	38	36	27	38	55	56	35	58	56	552	13	2.4%
09/10	38	46	43	30	39	37	28	39	56	57	36	59	57	565	13	2.4%

The Connections program does not require space to house students.



Cooper Landing



TOTAL # Change% Change

41		
47	6	14.6%
49	2	4.3%
40	-9	-18.4%
40	0	0.0%
37	-3	-7.5%
36	-1	-2.7%
35	-1	-2.8%
38	3	8.6%
35	-3	-7.9%
32	-3	-8.6%
21	-11	-34.4%
13	-8	-38.1%
14	1	7.7%
16	2	14.3%
16	0	0.0%
17	1	6.3%
17	0	0.0%
17	0	0.0%

06/07	2	2	2	1	2	2	2	2	2	1	16	0	0.0%
07/08	2	2	2	2	1	2	2	2	2	2	17	1	6.3%
08/09	2	2	2	2	2	1	2	2	2	2	17	0	0.0%
09/10	2	2	2	2	2	2	1	2	2	2	17	0	0.0%

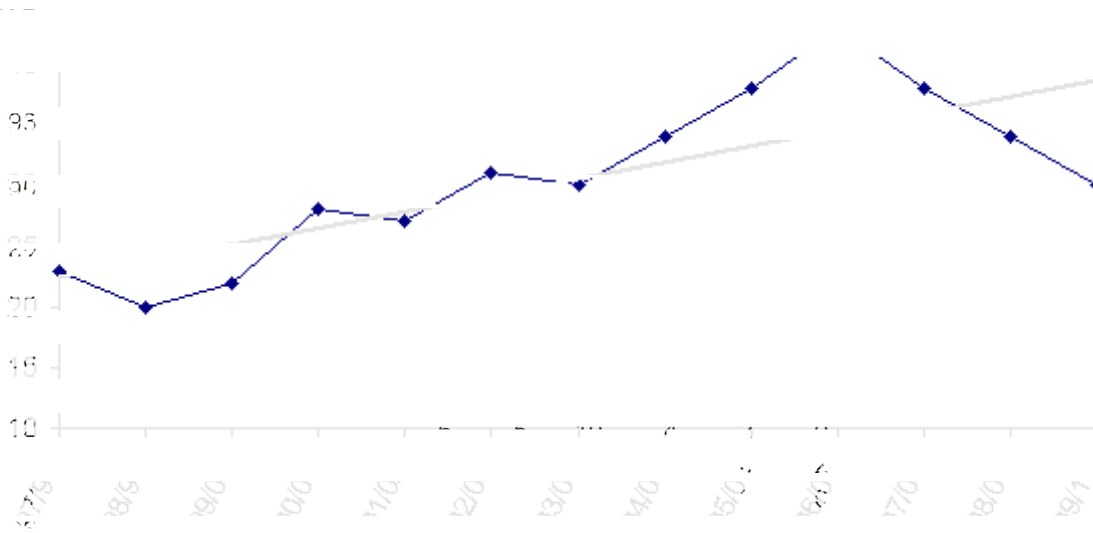
Building Capacity 50

enrolled and % of capacity

<u>FY03</u>	<u>FY04</u>	<u>FY05</u>
21	13	14
42%	26%	28%



Fireweed



TOTAL # Change % Change

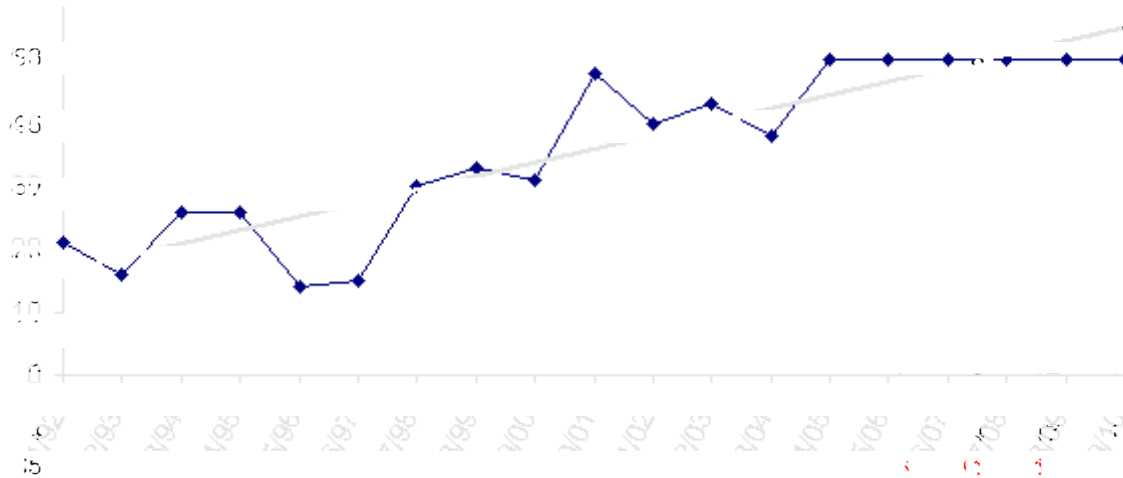
Fiscal Year	TOTAL	# Change	% Change
07/08	23	23	
08/09	20	-3	-13.0%
09/10	22	2	10.0%
10/11	28	6	27.3%
11/12	27	-1	-3.6%
12/13	31	4	14.8%
13/14	30	-1	-3.2%
14/15	34	4	13.3%
15/16	38	4	11.8%
16/17	43	5	13.2%
17/18	38	-5	-11.6%
18/19	34	-4	-10.5%
19/20	30	-4	-11.8%

Fiscal Year	07/08	08/09	09/10	10/11	11/12	12/13	13/14	14/15	15/16	16/17	17/18	18/19	19/20
07/08	23	20	22	28	27	31	30	34	38	43	38	34	30
08/09		5	5	5	5	5	5	5	5	5	5	5	5
09/10		5	5	5	5	5	5	5	5	5	5	5	5

Charter schools in the district are housed according to the terms of their contract, which is based on available space in existing facilities. Fireweed Academy is currently housed in a portable at Paul Banks Elementary in Homer.



Homer Flex



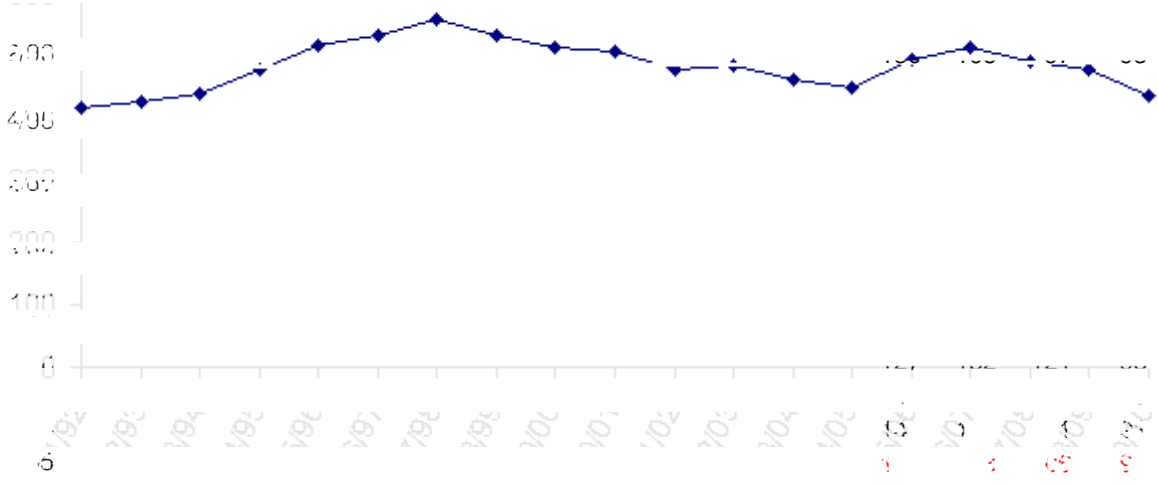
TOTAL # Change% Change

21							
16	-5	-23.8%					
26	10	62.5%					
26	0	0.0%					
14	-12	-46.2%					
15	1	7.1%					
30	15	100.0%					
33	3	10.0%					
31	-2	-6.1%					
48	17	54.8%					
40	-8	-16.7%					
43	3	7.5%					
38	-5	-11.6%					
50	12	31.6%					
50	0	0.0%					
06/07	6	11	15	18	50	0	0.0%
07/08	6	11	15	18	50	0	0.0%
08/09	6	11	15	18	50	0	0.0%
09/10	6	11	15	18	50	0	0.0%

For staffing purposes, board policy has established 50 students as the anticipated enrollment.



Homer High



TOTAL # Change% Change

416		
426	10	2.4%
440	14	3.3%
477	37	8.4%
515	38	8.0%
531	16	3.1%
558	27	5.1%
533	-25	-4.5%
513	-20	-3.8%
508	-5	-1.0%
478	-30	-5.9%
485	7	1.5%
461	-24	-4.9%
449	-12	-2.6%
493	44	9.8%
512	19	3.9%
491	-21	-4.1%
479	-12	-2.4%
435	-44	-9.2%

06/07	125	139	115	133	512	19	3.9%
07/08	112	125	139	115	491	-21	-4.1%
08/09	103	112	125	139	479	-12	-2.4%
09/10	95	103	112	125	435	-44	-9.2%

Building Capacity 600

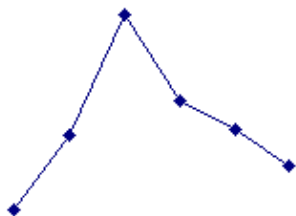
enrolled and % of capacity

<u>FY03</u>	<u>FY04</u>	<u>FY05</u>
485	461	449
81%	77%	75%

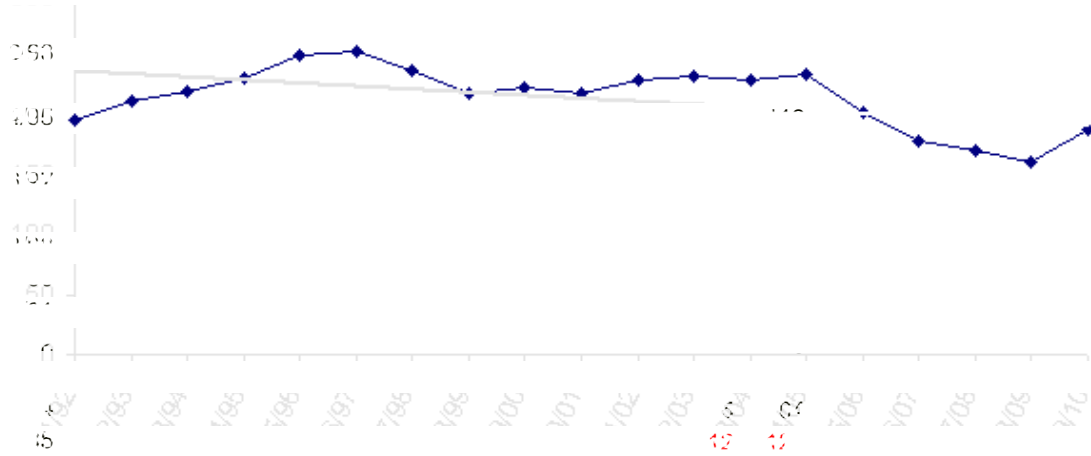


Homer Intermediate

YEAR	PRE-K	K	1	2	3	4	5	6	7	8	9	10	11	12	TOTAL	# Change	% Change
91/92						85	79	76							240		
92/93						91	85	79							255	15	6.3%
93/94						96	93	90							279	24	9.4%
94/95						78	91	93							262	-17	-6.1%
95/96						84	79	93							256	-6	-2.3%
96/97						66	92	91							249	-7	-2.7%
97/98																	
98/99																	
99/00																	
00/01																	
01/02																	
02/03																	
03/04																	
04/05																	
05/06																	
06/07																	
07/08																	
08/09																	
09/10																	



Homer Middle



TOTAL # Change% Change

197		
212	15	7.6%
220	8	3.8%
231	11	5.0%
250	19	8.2%
253	3	1.2%
238	-15	-5.9%
219	-19	-8.0%
223	4	1.8%
219	-4	-1.8%
230	11	5.0%
233	3	1.3%
229	-4	-1.7%
235	6	2.6%
202	-33	-14.0%
178	-24	-11.9%
170	-8	-4.5%
161	-9	-5.3%
189	28	17.4%

06/07	88	90	178	-24	-11.9%
07/08	82	88	170	-8	-4.5%
08/09	79	82	161	-9	-5.3%
09/10	110	79	189	28	17.4%

Building Capacity 375

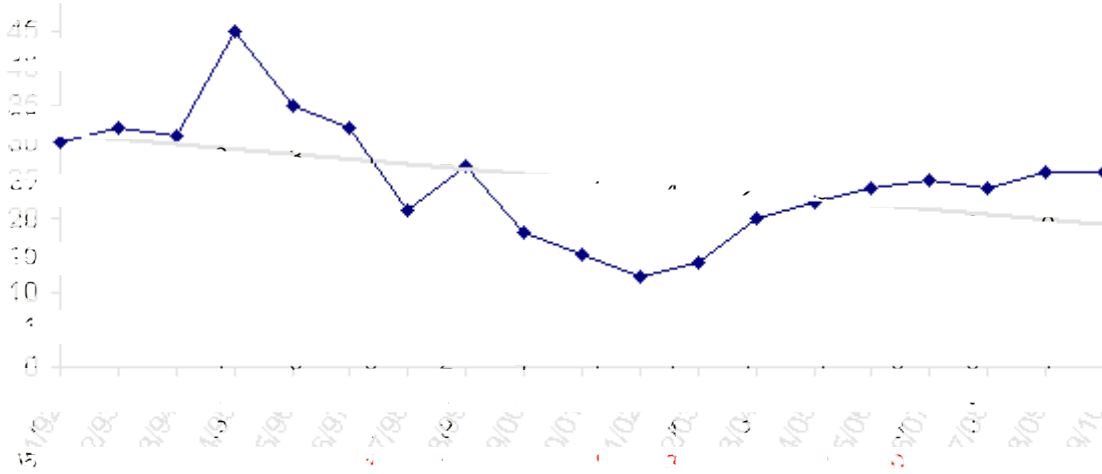
enrolled and % of capacity

<u>FY03</u>	<u>FY04</u>	<u>FY05</u>
233	229	235
62%	61%	63%



Hope

TOTAL # Change% Change



30		
32	2	6.7%
31	-1	-3.1%
45	14	45.2%
35	-10	-22.2%
32	-3	-8.6%
21	-11	-34.4%
27	6	28.6%
18	-9	-33.3%
15	-3	-16.7%
12	-3	-20.0%
14	2	16.7%
20	6	42.9%
22	2	10.0%
24	2	9.1%
25	1	4.2%
24	-1	-4.0%
26	2	8.3%
26	0	0.0%

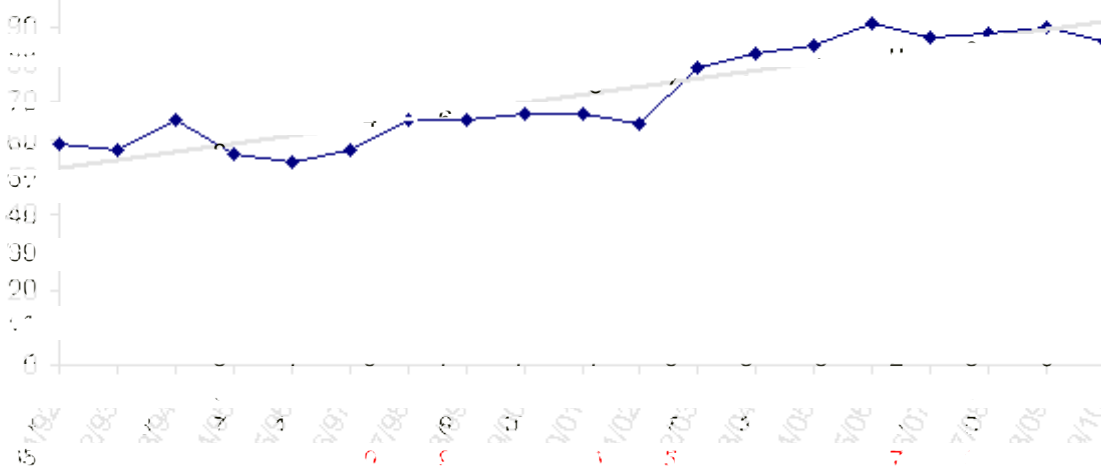
06/07	2	2	2	2	1	1	2	1	3	4	2	0	3	25	1	4.2%
07/08	2	2	2	2	2	1	1	2	1	3	4	2	0	24	-1	-4.0%
08/09	2	2	2	2	2	2	1	1	2	1	3	4	2	26	2	8.3%
09/10	2	2	2	2	2	2	2	1	1	2	1	3	4	26	0	0.0%

Building Capacity	100	
# enrolled and % of capacity		
<u>FY03</u>	<u>FY04</u>	<u>FY05</u>
14	20	22
14%	20%	22%



Kachemak-Selo

TOTAL # Change% Change



TOTAL	#	Change	% Change
	59		
	57	-2	-3.4%
	65	8	14.0%
	56	-9	-13.8%
	54	-2	-3.6%
	57	3	5.6%
	65	8	14.0%
	65	0	0.0%
	67	2	3.1%
	67	0	0.0%
	64	-3	-4.5%
	79	15	23.4%
	83	4	5.1%
	85	2	2.4%
	91	6	7.1%
	87	-4	-4.4%
	88	1	1.1%
	90	2	2.3%
	86	-4	-4.4%

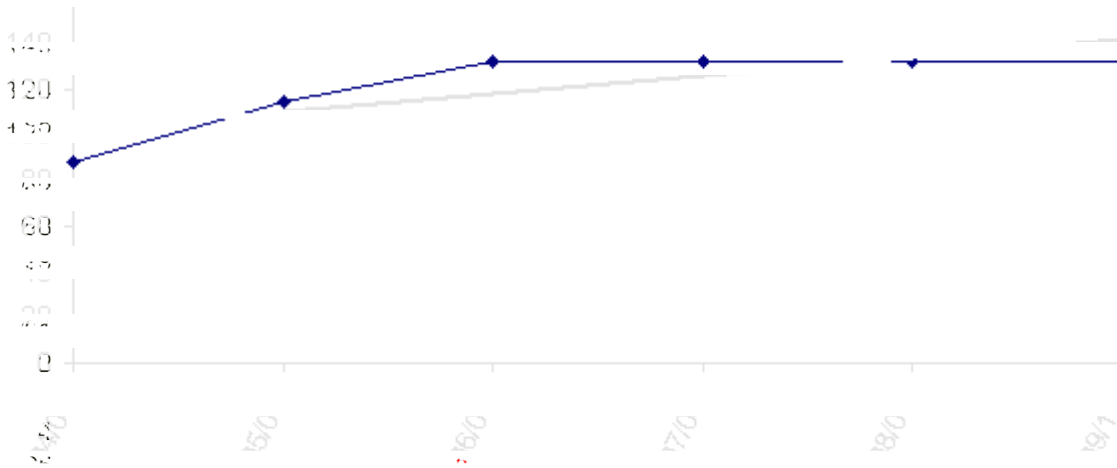
06/07	7	8	7	7	10	9	6	10	5	7	5	3	3	87	-4	-4.4%
07/08	7	7	8	7	7	10	9	6	10	5	5	4	3	88	1	1.1%
08/09	7	7	7	8	7	7	10	9	6	10	5	3	4	90	2	2.3%
09/10	7	7	7	7	8	7	7	10	9	6	5	3	3	86	-4	-4.4%

Building Capacity	100	
# enrolled and % of capacity		
<u>FY03</u>	<u>FY04</u>	<u>FY05</u>
79	83	85
79%	83%	85%



Kaleidoscope

TOTAL # Change % Change



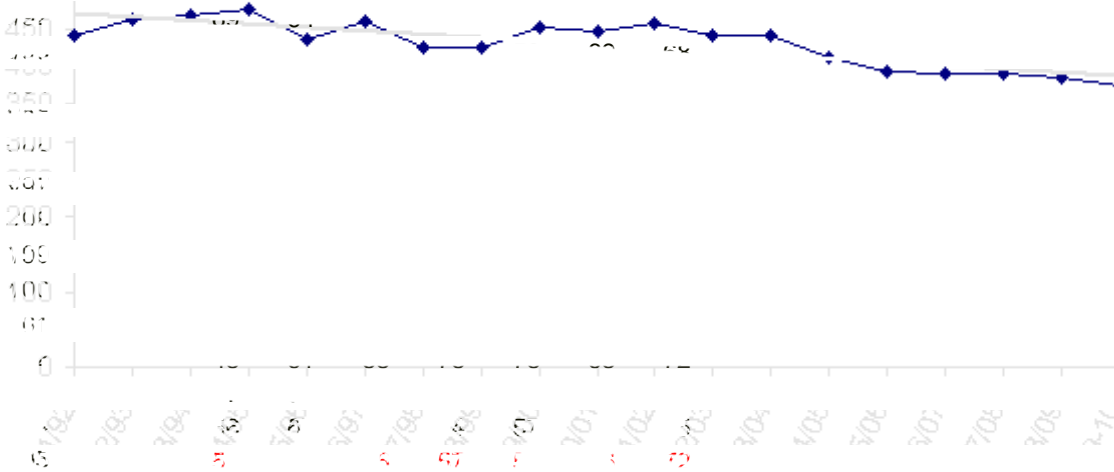
				TOTAL	# Change	% Change
05/06	77	77	20	88	88	
06/07	44	44	44	114	26	29.5%
07/08	44	44	44	132	18	15.8%
08/09	44	44	44	132	0	0.0%
09/10	44	44	44	132	0	0.0%

Charter schools in the district are housed according to the terms of their contract, which is based on available space in existing facilities. Kaleidoscope Charter is currently housed at Sears Elementary.



K-Beach Elementary

TOTAL # Change% Change



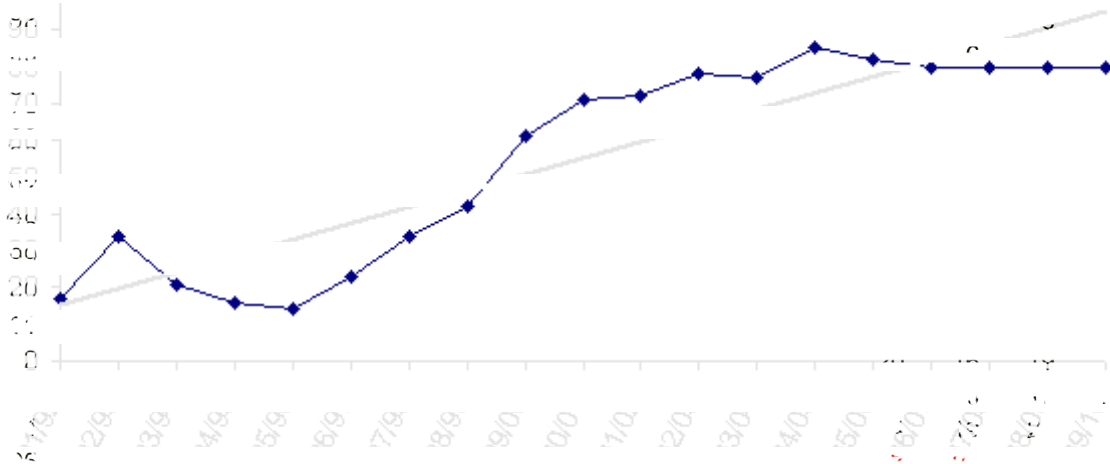
TOTAL	# Change	% Change
442		
462	20	4.5%
467	5	1.1%
476	9	1.9%
436	-40	-8.4%
460	24	5.5%
426	-34	-7.4%
426	0	0.0%
451	25	5.9%
446	-5	-1.1%
458	12	2.7%
441	-17	-3.7%
440	-1	-0.2%
411	-29	-6.6%
392	-19	-4.6%
390	-2	-0.5%
390	0	0.0%
386	-4	-1.0%
373	-13	-3.4%

06/07	54	53	52	55	66	57	53
07/08	53	54	53	52	55	66	57
08/09	53	53	54	53	52	55	66
09-10	53	53	53	54	53	52	55

Building Capacity	500	
# enrolled and % of capacity		
<u>FY03</u>	<u>FY04</u>	<u>FY05</u>
441	440	411
88%	88%	82%



Kenai Alternative



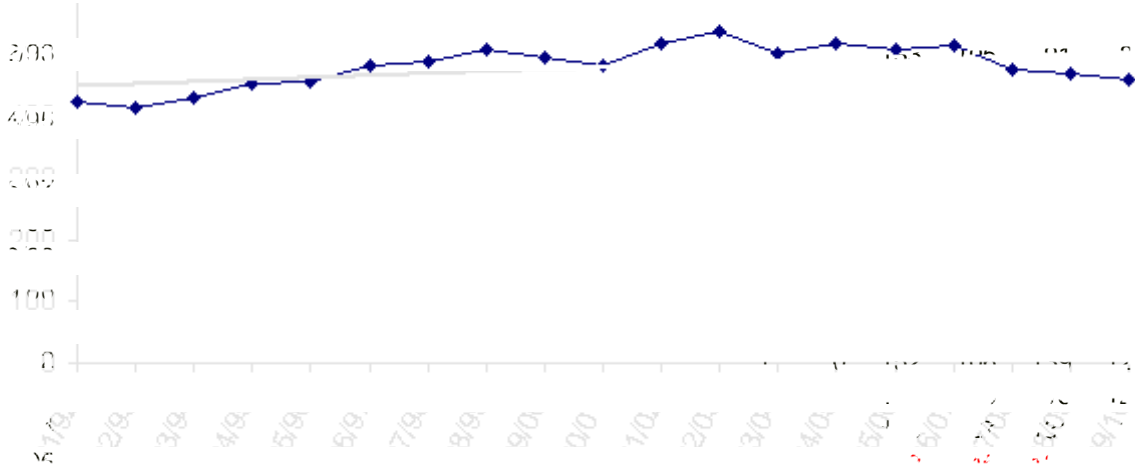
TOTAL # Change% Change

17			
34	17	100.0%	
21	-13	-38.2%	
16	-5	-23.8%	
14	-2	-12.5%	
23	9	64.3%	
34	11	47.8%	
42	8	23.5%	
61	19	45.2%	
71	10	16.4%	
72	1	1.4%	
78	6	8.3%	
77	-1	-1.3%	
85	8	10.4%	
82	-3	-3.5%	
80	-2	-2.4%	
80	0	0.0%	
80	0	0.0%	
80	0	0.0%	

For staffing purposes, board policy has established 85 students as the anticipated enrollment.



Kenai Central High School



TOTAL # Change % Change

425		
414	-11	-2.6%
431	17	4.1%
452	21	4.9%
457	5	1.1%
482	25	5.5%
490	8	1.7%
508	18	3.7%
496	-12	-2.4%
483	-13	-2.6%
518	35	7.2%
538	20	3.9%
502	-36	-6.7%
520	18	3.6%
509	-11	-2.1%
515	6	1.2%
476	-39	-7.6%
470	-6	-1.3%
461	-9	-1.9%

06/07	130	117	122	146	515	6	1.2%
07/08	107	130	117	122	476	-39	-7.6%
08/09	116	107	130	117	470	-6	-1.3%
09/10	108	116	107	130	461	-9	-1.9%

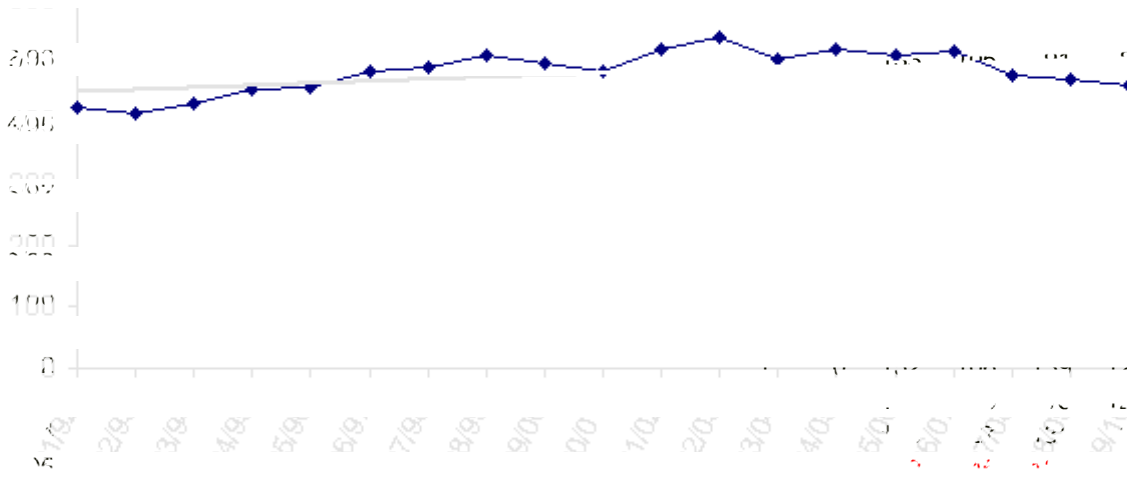
Building Capacity 800

enrolled and % of capacity

<u>FY03</u>	<u>FY04</u>	<u>FY05</u>
538	502	520
67%	63%	65%



TOTAL # Change% Change



425		
414	-11	-2.6%
431	17	4.1%
452	21	4.9%
457	5	1.1%
482	25	5.5%
490	8	1.7%
508	18	3.7%
496	-12	-2.4%
483	-13	-2.6%
518	35	7.2%
538	20	3.9%
502	-36	-6.7%
520	18	3.6%
509	-11	-2.1%
515	6	1.2%
476	-39	-7.6%
470	-6	-1.3%
461	-9	-1.9%

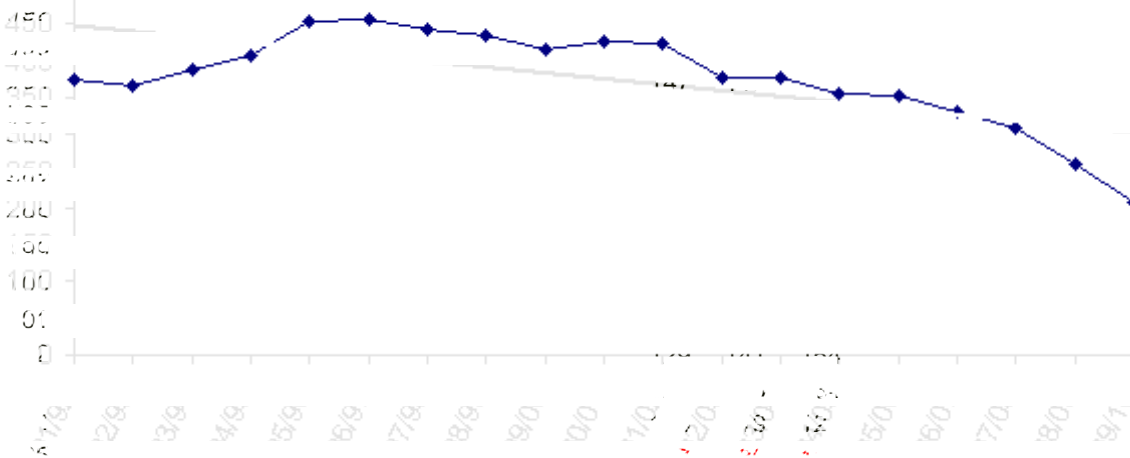
06/07	130	117	122	146	515	6	1.2%
07/08	107	130	117	122	476	-39	-7.6%
08/09	116	107	130	117	470	-6	-1.3%
09/10	108	116	107	130	461	-9	-1.9%

Building Capacity	800	
# enrolled and % of capacity		
<u>FY03</u>	<u>FY04</u>	<u>FY05</u>
538	502	520
67%	63%	65%



Kenai Middle

TOTAL # Change% Change



374		
365	-9	-2.4%
388	23	6.3%
406	18	4.6%
454	48	11.8%
455	1	0.2%
442	-13	-2.9%
435	-7	-1.6%
414	-21	-4.8%
426	12	2.9%
424	-2	-0.5%
376	-48	-11.3%
376	0	0.0%
354	-22	-5.9%
353	-1	-0.3%
331	-22	-6.2%
309	-22	-6.6%
260	-49	-15.9%
209	-51	-19.6%

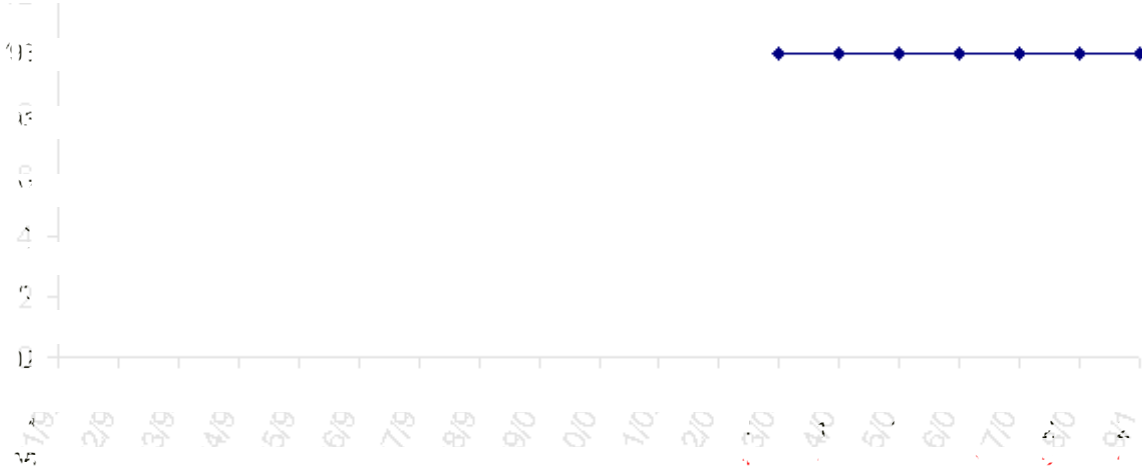
06/07	116	116	107
07/08	85	108	116
08/09	67	85	108
09/10	57	67	85

Building Capacity	550	
# enrolled and % of capacity		
<u>FY03</u>	<u>FY04</u>	<u>FY05</u>
376	376	354
68%	68%	64%



Kenai Youth Facility

TOTAL # Change% Change



TOTAL	#	Change	% Change
	10	10	
	10	0	0.0%
	10	0	0.0%
06/07	10	0	0.0%
07/08	10	0	0.0%
08/09	10	0	0.0%
09/10	10	0	0.0%

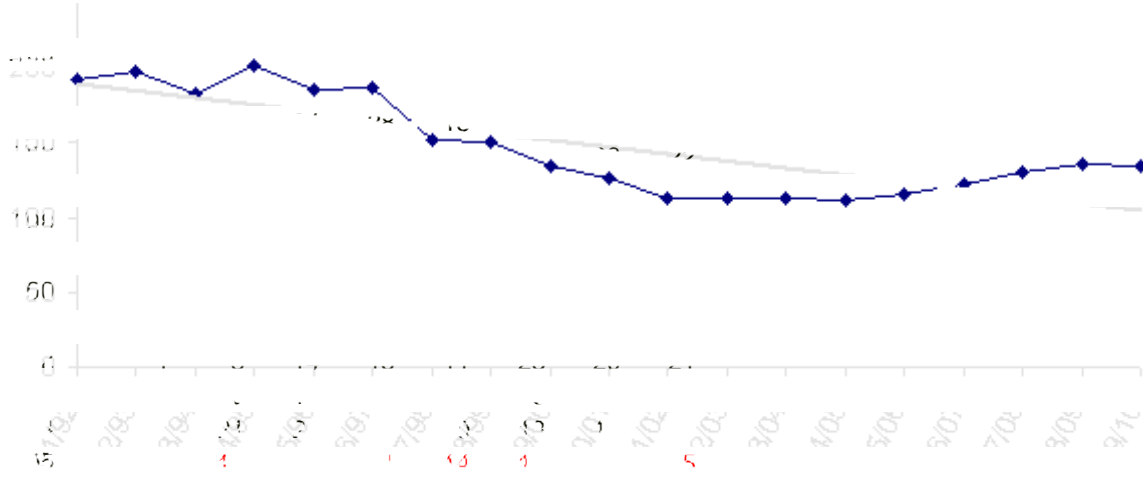
Capacity is ten beds.

Note: No actual enrollment for FY04 as of the date of this document.



McNeil Elementary

TOTAL # Change% Change



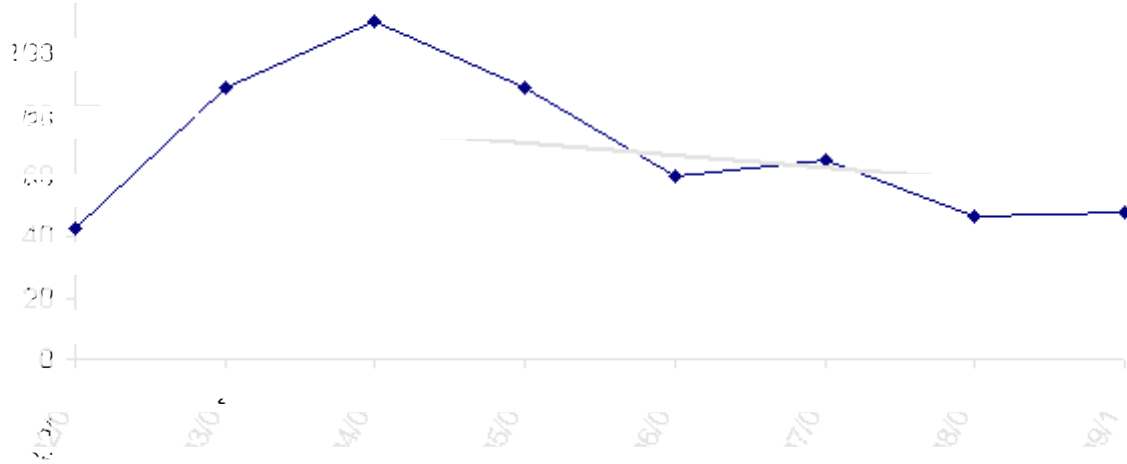
192		
197	5	2.6%
183	-14	-7.1%
202	19	10.4%
185	-17	-8.4%
187	2	1.1%
152	-35	-18.7%
150	-2	-1.3%
135	-15	-10.0%
126	-9	-6.7%
113	-13	-10.3%
113	0	0.0%
113	0	0.0%
111	-2	-1.8%
116	5	4.5%
122	6	5.2%
131	9	7.4%
136	5	3.8%
134	-2	-1.5%

06/07	19	20	17	21	21	14	10
07/08	19	19	20	17	21	21	14
08/09	19	19	19	20	17	21	21
09/10	19	19	19	19	20	17	21

Building Capacity	250	
# enrolled and % of capacity		
<u>FY03</u>	<u>FY04</u>	<u>FY05</u>
113	113	111
45%	45%	44%



Montessori



TOTAL # Change % Change

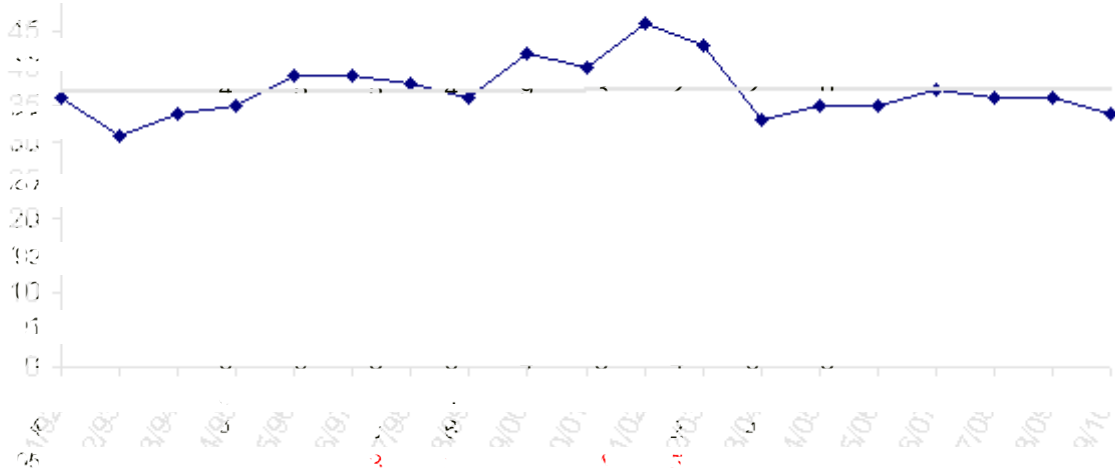
School Year	TOTAL	# Change	% Change
12/13	0		
13/14	43	43	
14/15	89	46	107.0%
15/16	111	22	24.7%
16/17	89	-22	-19.8%
17/18	60	-29	-32.6%
18/19	65	5	8.3%
19/20	47	-18	-27.7%
20/21	48	1	2.1%

05/06	10	20	21	21	89		
06/07	15	12	25	8	60	-29	-32.6%
07/08	17	12	11	25	65	5	8.3%
08/09	14	11	11	11	47	-18	-27.7%
09/10	15	11	11	11	48	1	2.1%

Charter schools in the district are housed according to the terms of their contract, which is based on available space in existing facilities. Montessori Charter is currently housed at Soldotna Elementary.



MoosePass



TOTAL # Change % Change

36		
31	-5	-13.9%
34	3	9.7%
35	1	2.9%
39	4	11.4%
39	0	0.0%
38	-1	-2.6%
36	-2	-5.3%
42	6	16.7%
40	-2	-4.8%
46	6	15.0%
43	-3	-6.5%
33	-10	-23.3%
35	2	6.1%
35	0	0.0%
37	2	5.7%
36	-1	-2.7%
36	0	0.0%
34	-2	-5.6%

06/07	4	4	4	4	3	3	6	4	5
07/08	4	4	4	4	4	3	3	6	4
08/09	4	4	4	4	4	4	3	3	6
09/10	4	4	4	4	4	4	4	3	3

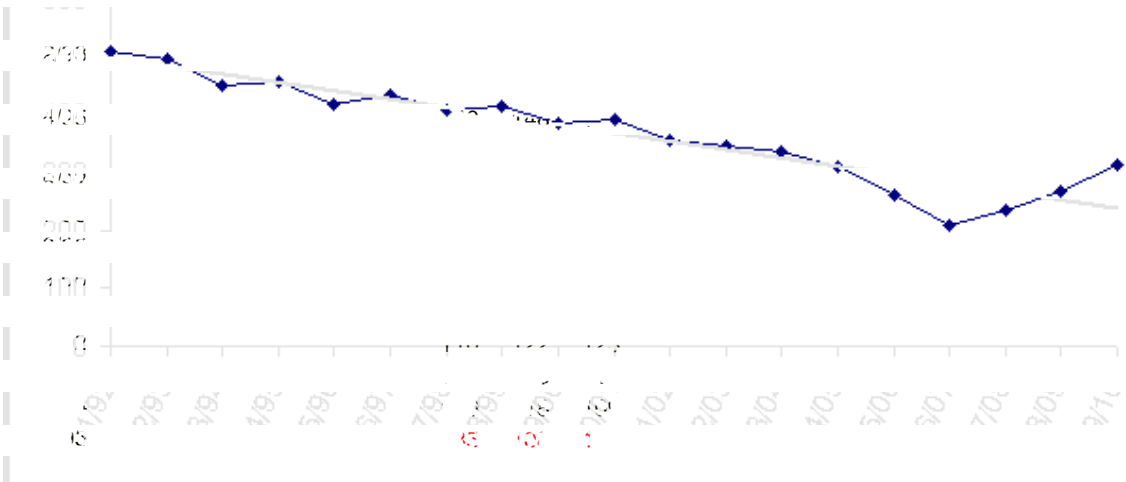
Building Capacity 65

enrolled and % of capacity

<u>FY03</u>	<u>FY04</u>	<u>FY05</u>
43	33	35
66%	51%	54%



Mountain View



TOTAL # Change% Change

509		
496	-13	-2.6%
449	-47	-9.5%
458	9	2.0%
417	-41	-9.0%
434	17	4.1%
407	-27	-6.2%
413	6	1.5%
386	-27	-6.5%
391	5	1.3%
355	-36	-9.2%
346	-9	-2.5%
337	-9	-2.6%
309	-28	-8.3%
260	-49	-15.9%
209	-51	-19.6%
234	25	12.0%
266	32	13.7%
313	47	17.7%

06/07	57	67	85	209	-51	-19.6%
07/08	110	57	67	234	25	12.0%
08/09	99	110	57	266	32	13.7%
09/10	104	99	110	313	47	17.7%

Building Capacity 500

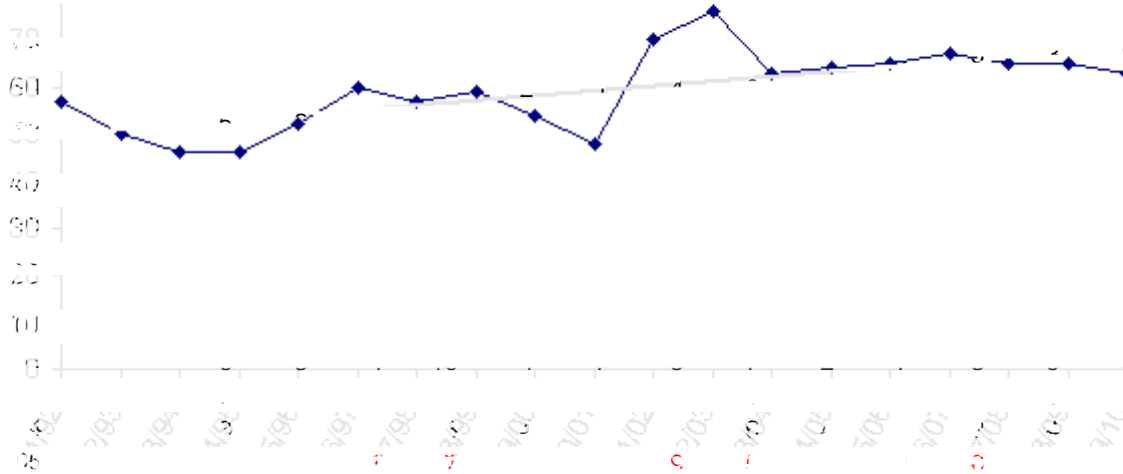
enrolled and % of capacity

FY03	FY04	FY05
346	337	309
69%	67%	62%



Nanwalek

TOTAL # Change% Change



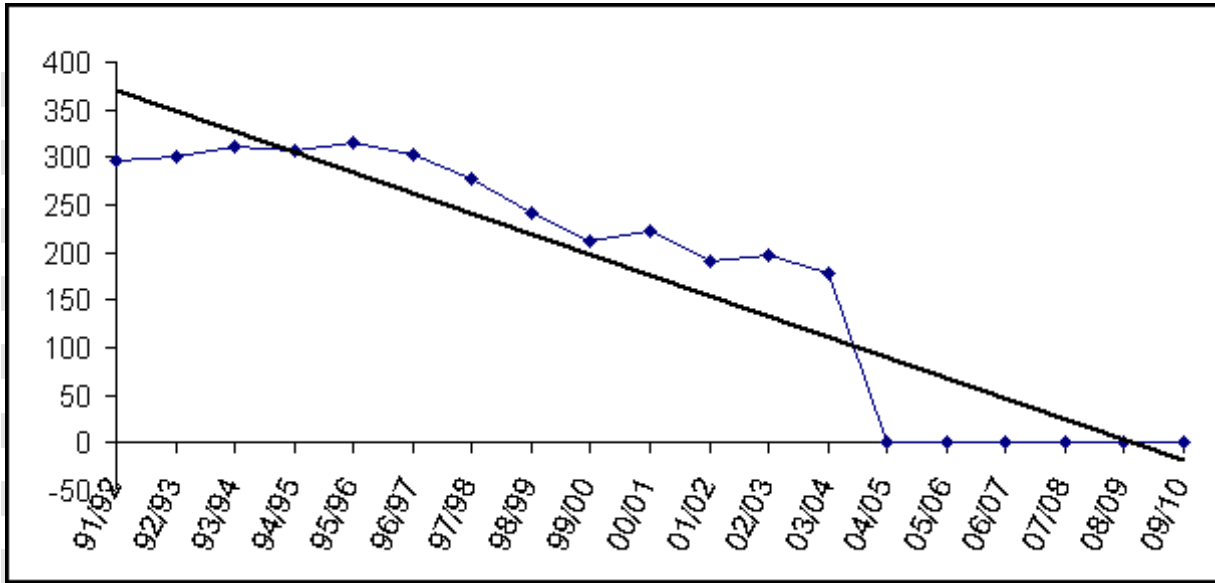
57		
50	-7	-12.3%
46	-4	-8.0%
46	0	0.0%
52	6	13.0%
60	8	15.4%
57	-3	-5.0%
59	2	3.5%
54	-5	-8.5%
48	-6	-11.1%
70	22	45.8%
76	6	8.6%
63	-13	-17.1%
64	1	1.6%
65	1	1.6%
67	2	3.1%
65	-2	-3.0%
65	0	0.0%
63	-2	-3.1%

06/07	4	5	4	3	7	7	3	4	9	5	6	4	6	67	2	3.1%
07/08	4	4	5	4	3	7	7	3	4	9	5	6	4	65	-2	-3.0%
08/09	4	4	4	5	4	3	7	7	3	4	9	5	6	65	0	0.0%
09/10	4	4	4	4	5	4	3	7	7	3	4	9	5	63	-2	-3.1%

Building Capacity	50	
# enrolled and % of capacity		
<u>FY03</u>	<u>FY04</u>	<u>FY05</u>
76	63	64
152%	126%	128%



Nikiski Elementary



TOTAL	# Change	% Change
296		
301	5	1.7%
311	10	3.3%
307	-4	-1.3%
315	8	2.6%
302	-13	-4.1%
277	-25	-8.3%
241	-36	-13.0%
211	-30	-12.4%
222	11	5.2%
191	-31	-14.0%
198	7	3.7%
179	-19	-9.6%
0		
0		
0		
0		
0		
0		
0		
0		
0		

06/07
07/08
08/09
09/10

Building Capacity 500

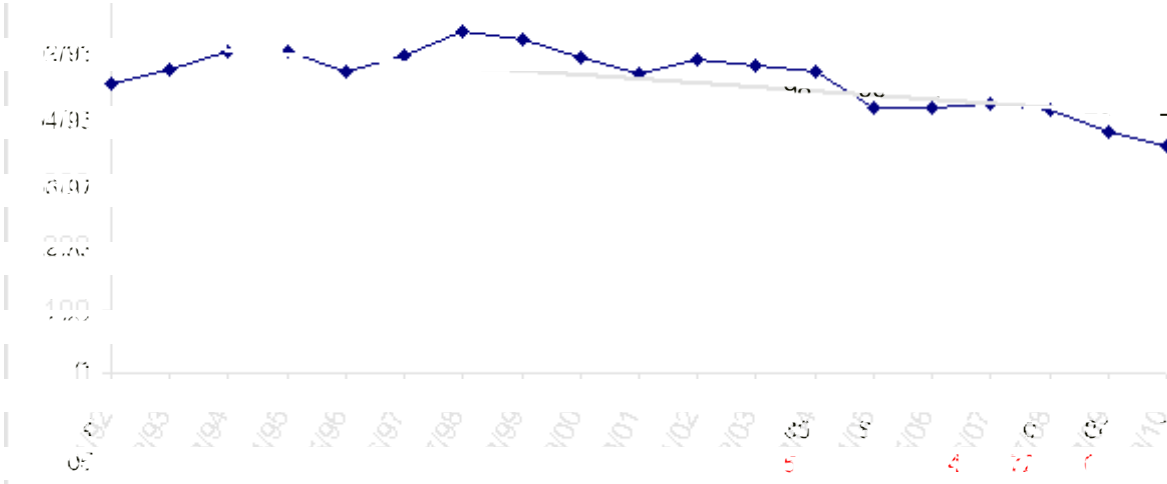
enrolled and % of capacity

<u>FY03</u>	<u>FY04</u>	<u>FY05</u>
198	179	N/A
40%	36%	N/A



Nikiski Jr/Sr High

TOTAL # Change% Change

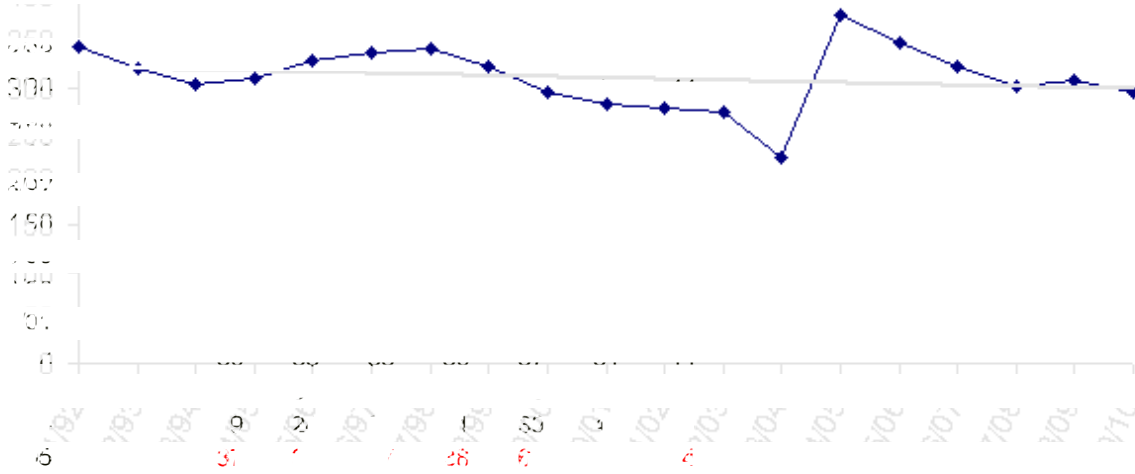


TOTAL	# Change	% Change							
458									
480	22	4.8%							
509	29	6.0%							
507	-2	-0.4%							
476	-31	-6.1%							
501	25	5.3%							
541	40	8.0%							
528	-13	-2.4%							
498	-30	-5.7%							
473	-25	-5.0%							
494	21	4.4%							
487	-7	-1.4%							
476	-11	-2.3%							
418	-58	-12.2%							
419	1	0.2%							
06/07	71	74	55	78	74	72	424	5	1.2%
07/08	64	71	74	55	78	74	416	-8	-1.9%
08/09	38	64	71	74	55	78	380	-36	-8.7%
09/10	57	38	64	71	74	55	359	-21	-5.5%

Building Capacity	600	
# enrolled and % of capacity		
<u>FY03</u>	<u>FY04</u>	<u>FY05</u>
487	476	418
81%	79%	70%



Nikiski North Star Elementary



TOTAL # Change% Change

344		
321	-23	-6.7%
304	-17	-5.3%
310	6	2.0%
330	20	6.5%
337	7	2.1%
343	6	1.8%
323	-20	-5.8%
295	-28	-8.7%
281	-14	-4.7%
277	-4	-1.4%
274	-3	-1.1%
224	-50	-18.2%
378	154	68.8%
348	-30	-7.9%
323	-25	-7.2%
301	-22	-6.8%
307	6	2.0%
294	-13	-4.2%

06/07	46	44	37	37	57	38	64
07/08	42	46	44	37	37	57	38
08/09	44	42	46	44	37	37	57
09/10	44	44	42	46	44	37	37

Building Capacity 500

enrolled and % of capacity

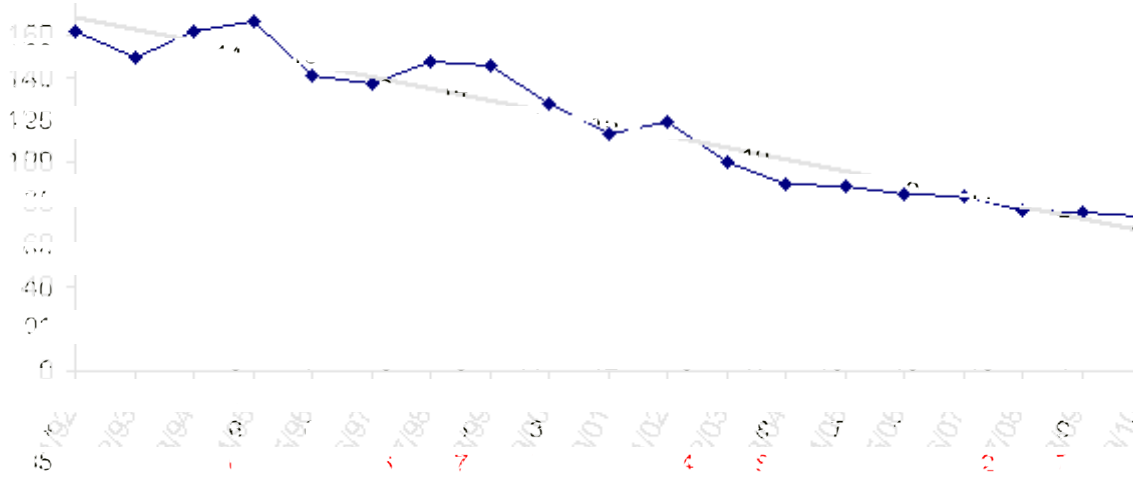
<u>FY03</u>	<u>FY04</u>	<u>FY05</u>
274	224	378
55%	45%	76%

When Nikiski EI and North Star were combined, the averaging of the prior three years to get the kindergarten enrollment got skewed. In order to follow the projections that were in place, the FY05 projection combined the two school's data. FY06 and FY07 used a total of the projections of each school individually for kindergarten numbers.



Nikolaevsk

TOTAL # Change% Change



162		
149	-13	-8.0%
162	13	8.7%
167	5	3.1%
141	-26	-15.6%
137	-4	-2.8%
147	10	7.3%
146	-1	-0.7%
127	-19	-13.0%
113	-14	-11.0%
119	6	5.3%
100	-19	-16.0%
89	-11	-11.0%
88	-1	-1.1%
84	-4	-4.5%
83	-1	-1.2%
77	-6	-7.2%
76	-1	-1.3%
74	-2	-2.6%

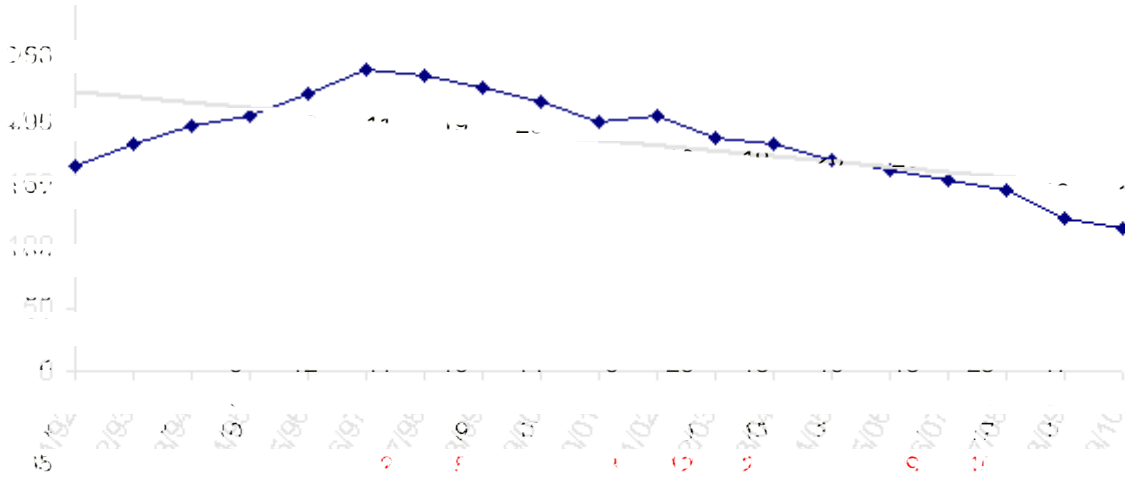
06/07	6	5	6	6	6	7	5	3	4	8	8	7	12	83	-1	-1.2%
07/08	6	6	5	6	6	6	7	5	3	4	8	8	7	77	-6	-7.2%
08/09	6	6	6	5	6	6	6	7	5	3	4	8	8	76	-1	-1.3%
09/10	6	6	6	6	5	6	6	6	7	5	3	4	8	74	-2	-2.6%

Building Capacity	250	
# enrolled and % of capacity		
<u>FY03</u>	<u>FY04</u>	<u>FY05</u>
100	89	88
40%	36%	35%



Ninilchik School

TOTAL # Change% Change



TOTAL	# Change	% Change
164		
181	17	10.4%
196	15	8.3%
203	7	3.6%
222	19	9.4%
240	18	8.1%
236	-4	-1.7%
227	-9	-3.8%
215	-12	-5.3%
199	-16	-7.4%
204	5	2.5%
186	-18	-8.8%
181	-5	-2.7%
169	-12	-6.6%
161	-8	-4.7%
152	-9	-5.6%
144	-8	-5.3%
122	-22	-15.3%
114	-8	-6.6%

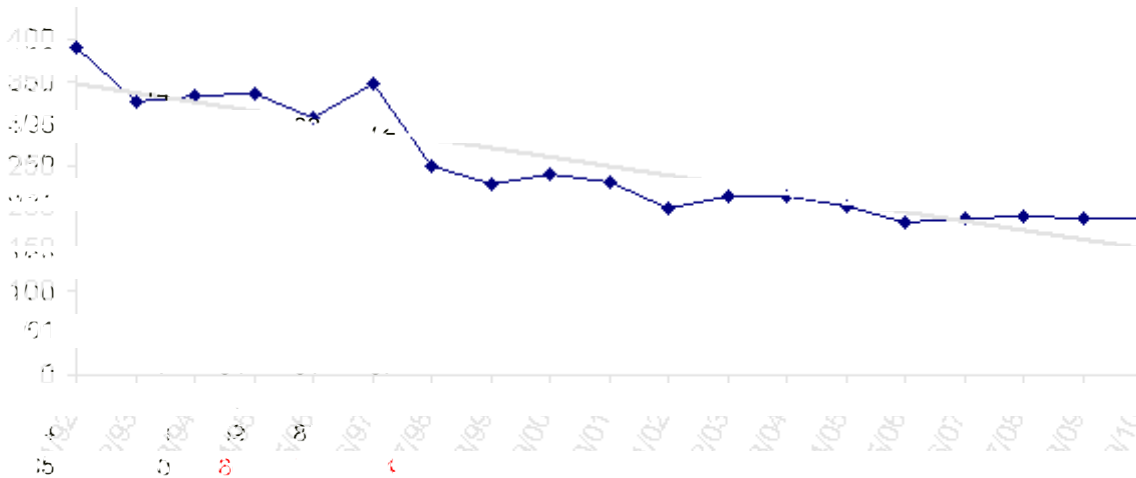
06/07	8	7	7	10	2	5	9	13	12	20	15	29	15	152	-9	-5.6%
07/08	7	8	7	7	10	2	5	9	13	12	20	15	29	144	-8	-5.3%
08/09	7	7	8	7	7	10	2	5	9	13	12	20	15	122	-22	-15.3%
09/10	7	7	7	8	7	7	10	2	5	9	13	12	20	114	-8	-6.6%

Building Capacity	400	
# enrolled and % of capacity		
<u>FY03</u>	<u>FY04</u>	<u>FY05</u>
186	181	169
47%	45%	42%



Paul Banks Elementary

TOTAL # Change% Change



TOTAL	#	Change	% Change
390			
326	-64	-16.4%	
332	6	1.8%	
334	2	0.6%	
307	-27	-8.1%	
347	40	13.0%	
249	-98	-28.2%	
227	-22	-8.8%	
239	12	5.3%	
229	-10	-4.2%	
199	-30	-13.1%	
212	13	6.5%	
214	2	0.9%	
202	-12	-5.6%	
183	-19	-9.4%	
186	3	1.6%	
188	2	1.1%	
186	-2	-1.1%	
187	1	0.5%	

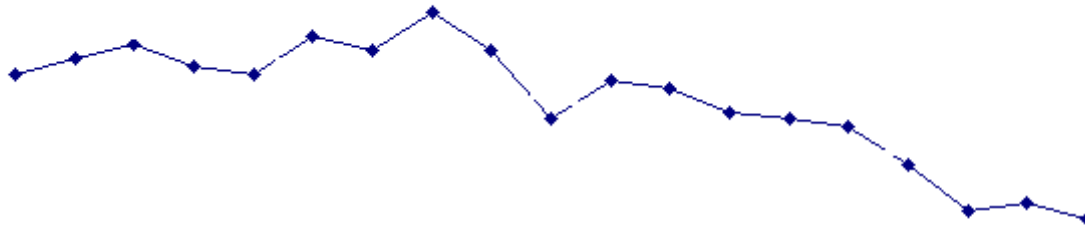
06/07	0	61	65	60
07/08	0	62	61	65
08/09	0	63	62	61
09/10	0	62	63	62

Building Capacity	350	
# enrolled and % of capacity		
<u>FY03</u>	<u>FY04</u>	<u>FY05</u>
212	214	202
61%	61%	58%



Port Graham School

YEAR	PRE-K	K	1	2	3	4	5	6	7	8	9	10	11	12	TOTAL	# Change	% Change
91/92		4	3	7	5	1	2	5	2	5	1	0			35		
92/93		2	3	3	6	5	1	2	6	3	5	1			37	2	5.7%
93/94		4	1	4	3	7	5	1	2	5	2	5			39	2	5.4%
94/95		6	5	1	3	3	3	5	1	2	5	2			36	-3	-7.7%
95/96		4	5	4	1	1	3	4	5	1	2	5			35	-1	-2.8%
96/97		5	5	5	5	2	2	4	4	5	1	2			40	5	14.3%
97/98		0	5	5	5	5	1	2	4	6	4	1			38	-2	-5.0%
98/99		3	0	6	5	5	5	2	3	4	6	4			43	5	13.2%
99/00		2	2	0	6	4	5	4	2	3	4	6			38	-5	-11.6%
00/01		2	2	1	0	6	3	5	4	2	1	3			29	-9	-23.7%
01/02		3	2	2	2	0	5	4	7	6	2	1			34	5	17.2%
02/03		1	2	2	2	3	1	6	6	4	4	2			33	-1	-2.9%
03/04		0	1	2	2	2	3	0	7	6	4	3			30	-3	-9.1%
04/05		2	2	1	2	2	2	3	0	7	6	2			29	-1	-3.3%
05/06		1	2	2	1	2	2	2	3	0	7	6			28	-1	-3.4%
06/07		1	1	2	2	1	2	2	2	3	0	7			23	-5	-17.9%
07/08		1	1	1	2	2	1	2	2	2	3	0			17	-6	-26.1%
08/09		1	1	1	1	2	2	1	2	2	2	3			18	1	5.9%
09/10		1	1	1	1	1	2	2	1	2	2	2			16	-2	-11.1%



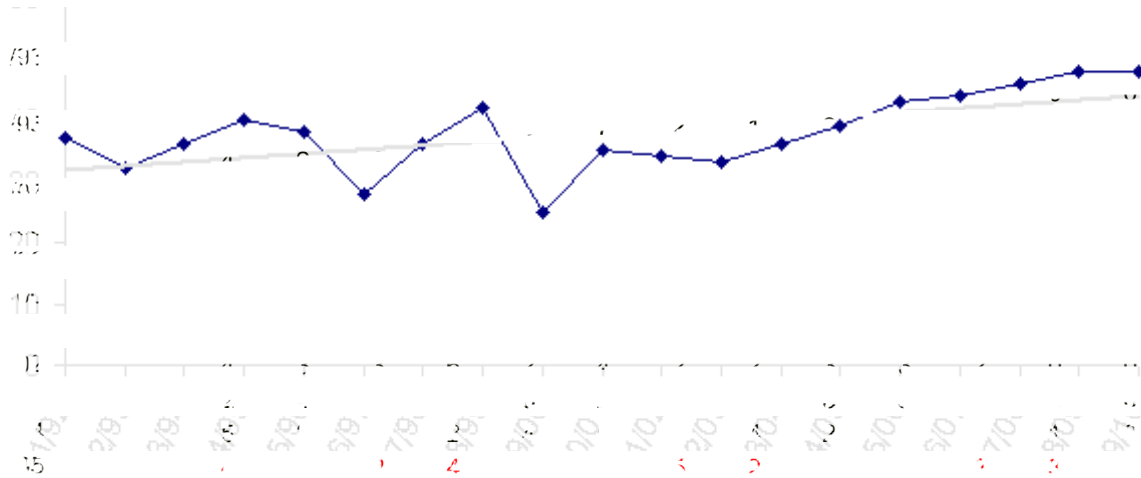
Building Capacity 50

enrolled and % of capacity

FY03	FY04	FY05
33	30	29
66%	60%	58%



Razdolna School



TOTAL # Change% Change

37		
32	-5	-13.5%
36	4	12.5%
40	4	11.1%
38	-2	-5.0%
28	-10	-26.3%
36	8	28.6%
42	6	16.7%
25	-17	-40.5%
35	10	40.0%
34	-1	-2.9%
33	-1	-2.9%
36	3	9.1%
39	3	8.3%
43	4	10.3%
44	1	2.3%
46	2	4.5%
48	2	4.3%
48	0	0.0%

06/07	4	4	4	5	2	4	2	4	5	2	4	2	2	44	1	2.3%
07/08	4	4	4	4	5	2	4	2	4	5	2	4	2	46	2	4.5%
08/09	4	4	4	4	4	5	2	4	2	4	5	2	4	48	2	4.3%
09/10	4	4	4	4	4	4	5	2	4	2	4	5	2	48	0	0.0%

Building Capacity 50

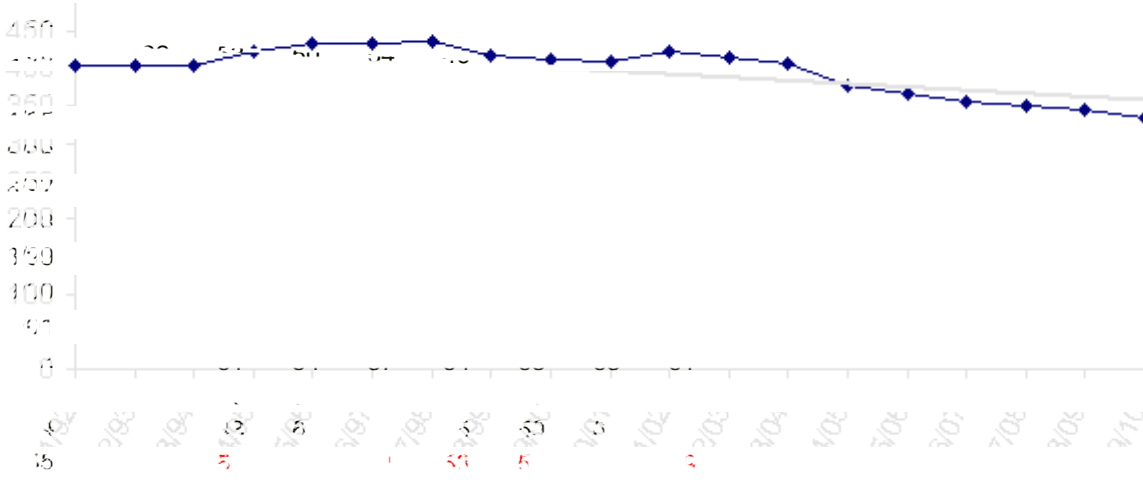
enrolled and % of capacity

<u>FY03</u>	<u>FY04</u>	<u>FY05</u>
33	36	39
66%	72%	78%



Redoubt Elementary

TOTAL # Change% Change



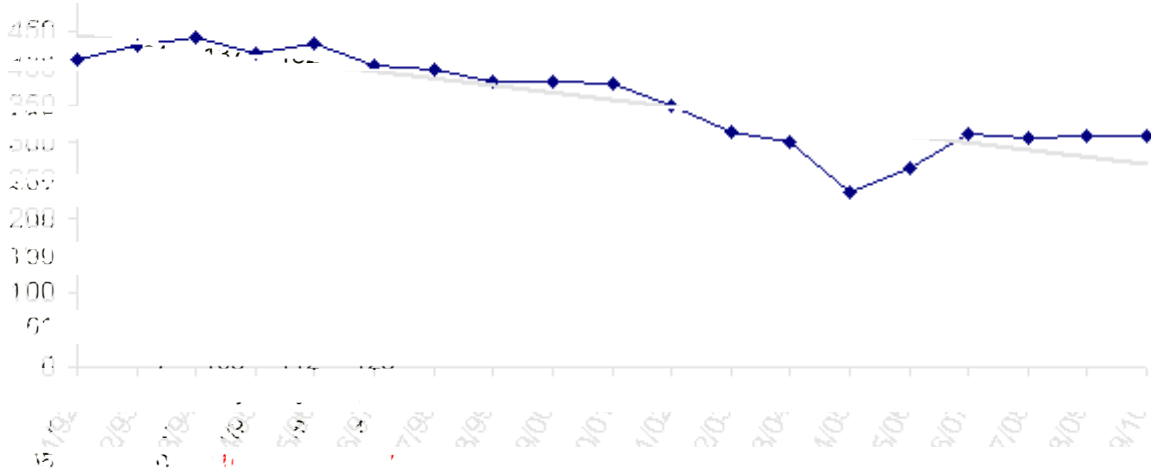
404		
403	-1	-0.2%
405	2	0.5%
422	17	4.2%
432	10	2.4%
433	1	0.2%
436	3	0.7%
417	-19	-4.4%
411	-6	-1.4%
410	-1	-0.2%
423	13	3.2%
414	-9	-2.1%
407	-7	-1.7%
377	-30	-7.4%
367	-10	-2.7%
356	-11	-3.0%
351	-5	-1.4%
346	-5	-1.4%
333	-13	-3.8%

06/07	47	49	50	42	61	53	54
07/08	49	47	49	50	42	61	53
08/09	48	49	47	49	50	42	61
09/10	48	48	49	47	49	50	42

Building Capacity	500	
# enrolled and % of capacity		
<u>FY03</u>	<u>FY04</u>	<u>FY05</u>
414	407	377
83%	81%	75%



Sears Elementary



TOTAL # Change% Change

411		
429	18	4.4%
440	11	2.6%
420	-20	-4.5%
434	14	3.3%
403	-31	-7.1%
399	-4	-1.0%
383	-16	-4.0%
383	0	0.0%
378	-5	-1.3%
350	-28	-7.4%
314	-36	-10.3%
302	-12	-3.8%
234	-68	-22.5%
266	32	13.7%
313	47	17.7%
307	-6	-1.9%
310	3	1.0%
309	-1	-0.3%

06/07	0	104	99	110
07/08	0	104	104	99
08/09	0	102	104	104
09/10	0	103	102	104

Building Capacity 500

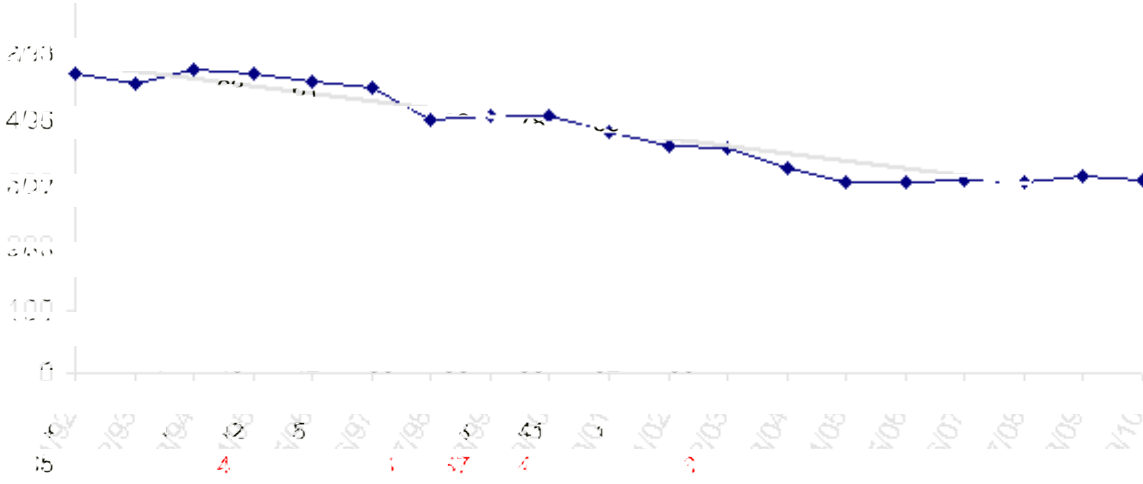
enrolled and % of capacity

<u>FY03</u>	<u>FY04</u>	<u>FY05</u>
314	302	234
63%	60%	47%



Seward Elementary

TOTAL # Change% Change



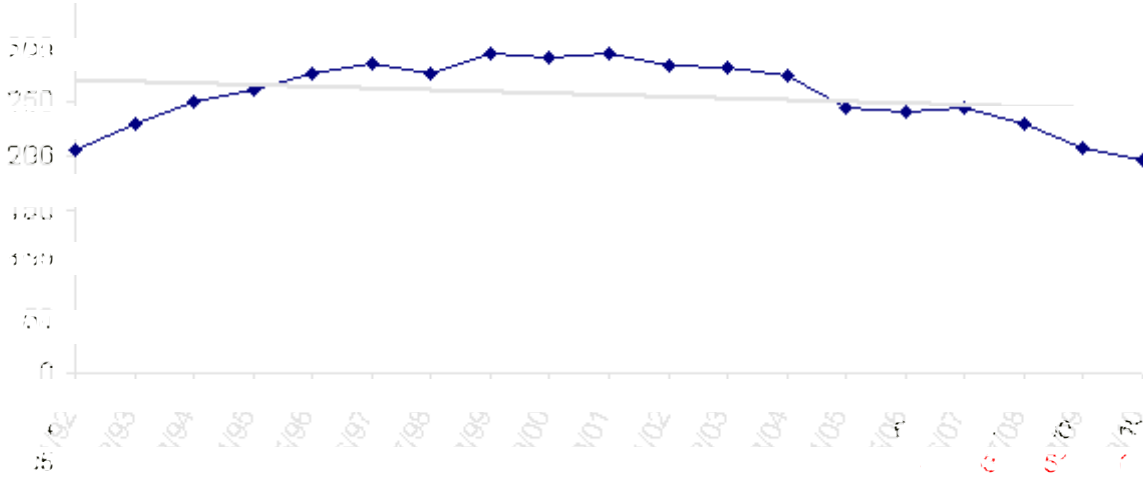
TOTAL	#	Change	% Change
473			
457	-16	-3.4%	
480	23	5.0%	
473	-7	-1.5%	
460	-13	-2.7%	
451	-9	-2.0%	
401	-50	-11.1%	
407	6	1.5%	
405	-2	-0.5%	
382	-23	-5.7%	
358	-24	-6.3%	
356	-2	-0.6%	
323	-33	-9.3%	
301	-22	-6.8%	
303	2	0.7%	
306	3	1.0%	
303	-3	-1.0%	
310	7	2.3%	
304	-6	-1.9%	

06/07	43	45	43	41	50	37	47
07/08	44	43	45	43	41	50	37
08/09	44	44	43	45	43	41	50
09/10	44	44	44	43	45	43	41

Building Capacity	500	
# enrolled and % of capacity		
<u>FY03</u>	<u>FY04</u>	<u>FY05</u>
356	323	301
71%	65%	60%



Seward High



TOTAL # Change% Change

205							
230	25	12.2%					
250	20	8.7%					
261	11	4.4%					
276	15	5.7%					
285	9	3.3%					
276	-9	-3.2%					
294	18	6.5%					
290	-4	-1.4%					
295	5	1.7%					
284	-11	-3.7%					
282	-2	-0.7%					
274	-8	-2.8%					
244	-30	-10.9%					
240	-4	-1.6%					
06/07	56	62	64	63	245	5	2.1%
07/08	47	56	62	64	229	-16	-6.5%
08/09	42	47	56	62	207	-22	-9.6%
09/10	52	42	47	56	197	-10	-4.8%

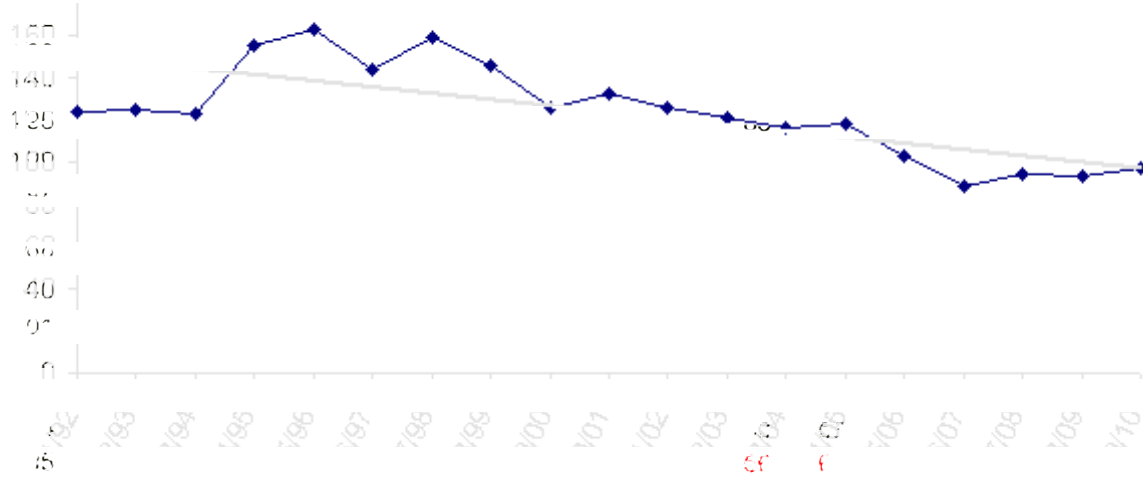
Building Capacity 400

enrolled and % of capacity

<u>FY03</u>	<u>FY04</u>	<u>FY05</u>
282	274	244
71%	69%	61%



Seward Middle



TOTAL # Change% Change

124					
125	1	0.8%			
123	-2	-1.6%			
155	32	26.0%			
163	8	5.2%			
144	-19	-11.7%			
159	15	10.4%			
146	-13	-8.2%			
126	-20	-13.7%			
132	6	4.8%			
126	-6	-4.5%			
121	-5	-4.0%			
116	-5	-4.1%			
118	2	1.7%			
103	-15	-12.7%			
06/07	42	47	89	-14	-13.6%
07/08	52	42	94	5	5.6%
08/09	41	52	93	-1	-1.1%
09/10	56	41	97	4	4.3%

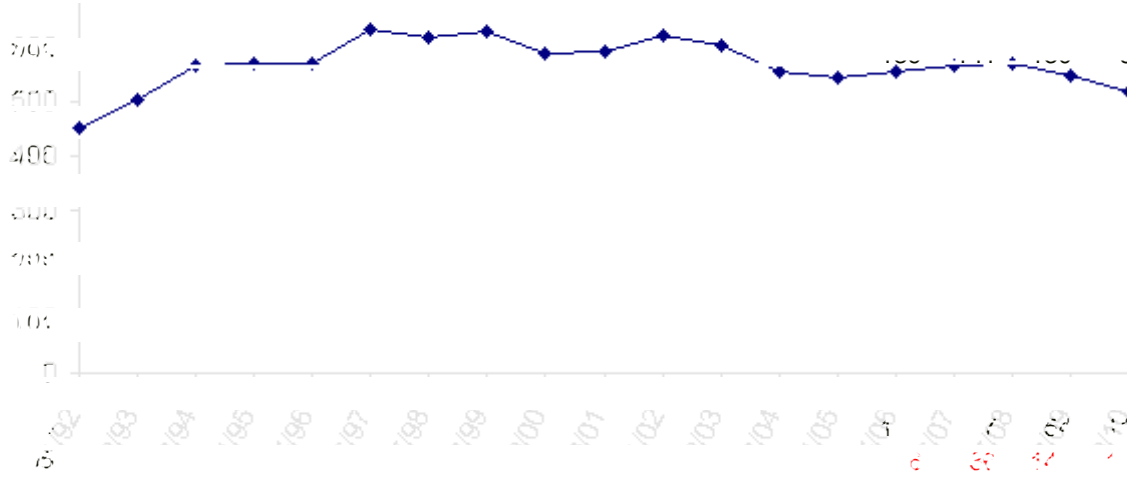
Building Capacity 300

enrolled and % of capacity

<u>FY03</u>	<u>FY04</u>	<u>FY05</u>
121	116	118
40%	39%	39%



Skyview High



TOTAL # Change% Change

452		
503	51	11.3%
568	65	12.9%
572	4	0.7%
570	-2	-0.3%
633	63	11.1%
618	-15	-2.4%
628	10	1.6%
588	-40	-6.4%
594	6	1.0%
624	30	5.1%
605	-19	-3.0%
556	-49	-8.1%
544	-12	-2.2%
557	13	2.4%
568	11	2.0%
569	1	0.2%
548	-21	-3.7%
520	-28	-5.1%

06/07	153	143	136	136	568	11	2.0%
07/08	137	153	143	136	569	1	0.2%
08/09	115	137	153	143	548	-21	-3.7%
09/10	115	115	137	153	520	-28	-5.1%

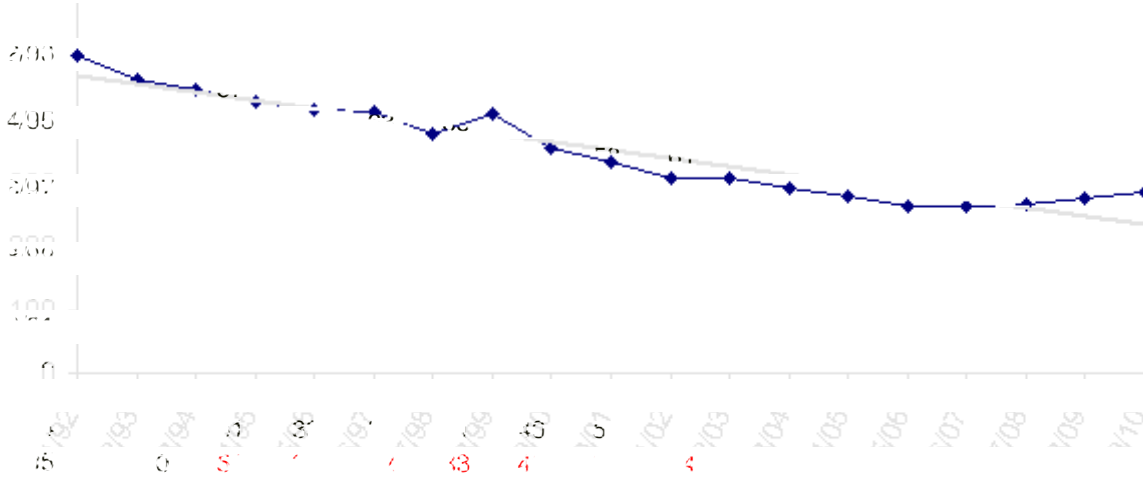
Building Capacity 600

enrolled and % of capacity

	<u>FY03</u>	<u>FY04</u>	<u>FY05</u>
	605	556	544
	101%	93%	91%



Soldotna Elementary



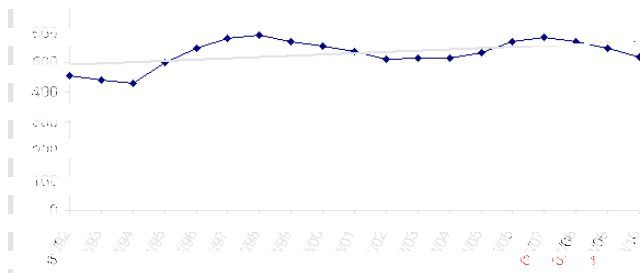
TOTAL	#	Change	% Change
503			
462	-41	-8.2%	
449	-13	-2.8%	
429	-20	-4.5%	
416	-13	-3.0%	
414	-2	-0.5%	
377	-37	-8.9%	
409	32	8.5%	
356	-53	-13.0%	
333	-23	-6.5%	
307	-26	-7.8%	
307	0	0.0%	
292	-15	-4.9%	
279	-13	-4.5%	
264	-15	-5.4%	
265	1	0.4%	
268	3	1.1%	
276	8	3.0%	
285	9	3.3%	

06/07	0	40	39	51	30	32	33	40
07/08	0	43	40	39	51	30	32	33
08/09	0	41	43	40	39	51	30	32
09/10	0	41	41	43	40	39	51	30

Building Capacity	550	
# enrolled and % of capacity		
<u>FY03</u>	<u>FY04</u>	<u>FY05</u>
307	292	279
56%	53%	51%



Soldotna High



TOTAL # Change% Change

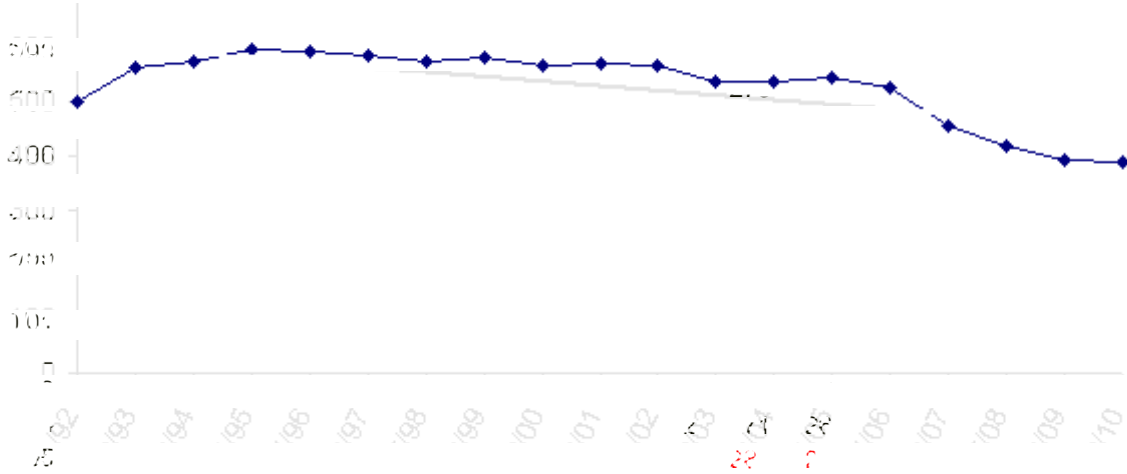
456		
441	-15	-3.3%
431	-10	-2.3%
500	69	16.0%
547	47	9.4%
581	34	6.2%
592	11	1.9%
571	-21	-3.5%
554	-17	-3.0%
538	-16	-2.9%
511	-27	-5.0%
513	2	0.4%
516	3	0.6%
535	19	3.7%
570	35	6.5%
584	14	2.5%
569	-15	-2.6%
548	-21	-3.7%
520	-28	-5.1%

06/07	153	143	136	152	584	14	2.5%
07/08	137	153	143	136	569	-15	-2.6%
08/09	115	137	153	143	548	-21	-3.7%
09/10	115	115	137	153	520	-28	-5.1%

Building Capacity	800	
# enrolled and % of capacity		
<u>FY03</u>	<u>FY04</u>	<u>FY05</u>
513	516	535
64%	65%	67%



Soldotna Middle School



TOTAL # Change% Change

499		
564	65	13.0%
573	9	1.6%
595	22	3.8%
592	-3	-0.5%
585	-7	-1.2%
574	-11	-1.9%
580	6	1.0%
566	-14	-2.4%
572	6	1.1%
567	-5	-0.9%
538	-29	-5.1%
536	-2	-0.4%
546	10	1.9%
527	-19	-3.5%
457	-70	-13.3%
417	-40	-8.8%
393	-24	-5.8%
389	-4	-1.0%

06/07	210	247
07/08	207	210
08/09	186	207
09/10	203	186

Building Capacity 550

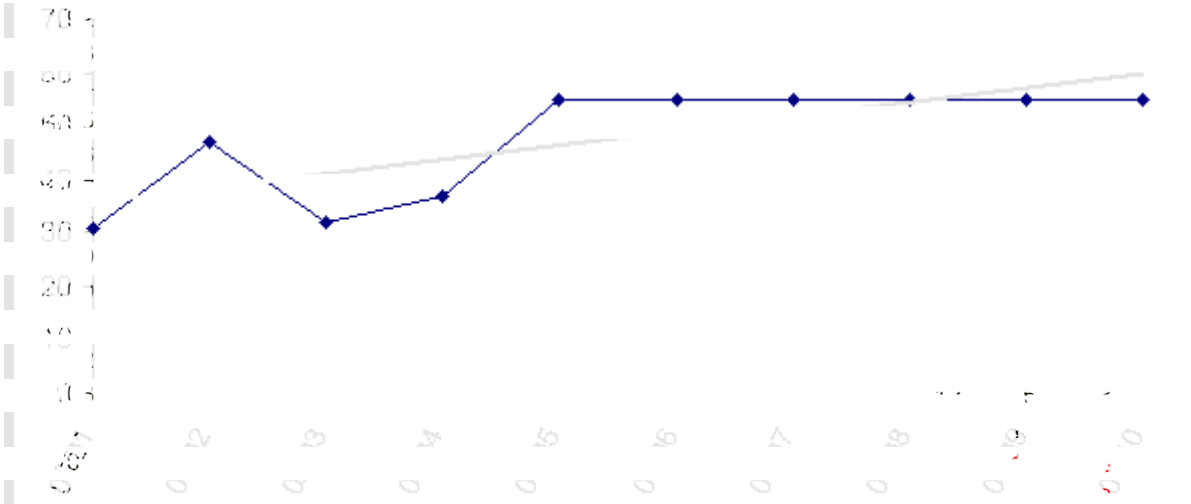
enrolled and % of capacity

FY03	FY04	FY05
538	536	546
98%	97%	99%



Spring Creek School

TOTAL # Change% Change



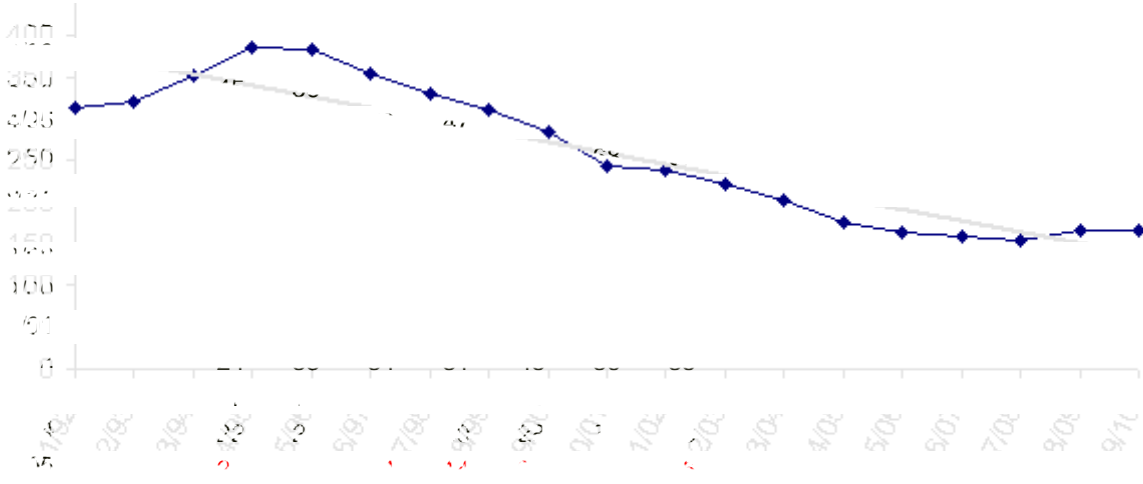
Year	Occupancy	Change #	Change %
06/07	31	31	
07/08	47	16	51.6%
08/09	32	-15	-31.9%
09/10	37	5	15.6%
10/11	55	18	48.6%
11/12	55	0	0.0%
12/13	55	0	0.0%
13/14	55	0	0.0%
14/15	55	0	0.0%
15/16	55	0	0.0%
16/17	55	0	0.0%
17/18	55	0	0.0%
18/19	55	0	0.0%
19/20	55	0	0.0%

Capacity is fifty beds.



Sterling Elementary

TOTAL # Change% Change



314		
319	5	1.6%
351	32	10.0%
386	35	10.0%
382	-4	-1.0%
353	-29	-7.6%
329	-24	-6.8%
310	-19	-5.8%
284	-26	-8.4%
242	-42	-14.8%
238	-4	-1.7%
221	-17	-7.1%
203	-18	-8.1%
176	-27	-13.3%
164	-12	-6.8%
160	-4	-2.4%
155	-5	-3.1%
165	10	6.5%
165	0	0.0%

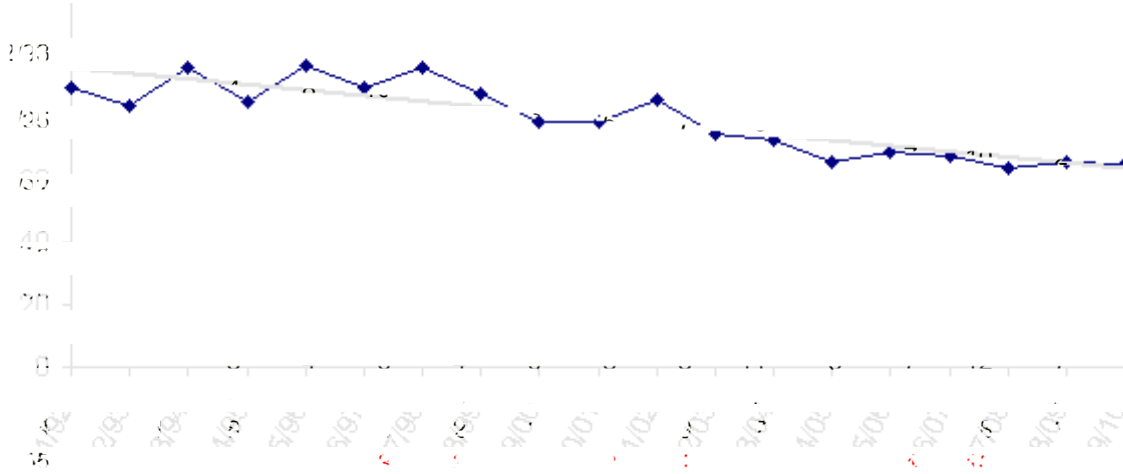
06/07	23	24	24	22	24	14	29	160	-4	-2.4%
07/08	24	23	24	24	22	24	14	155	-5	-3.1%
08/09	24	24	23	24	24	22	24	165	10	6.5%
09/10	24	24	24	23	24	24	22	165	0	0.0%

Building Capacity	325	
# enrolled and % of capacity		
<u>FY03</u>	<u>FY04</u>	<u>FY05</u>
221	203	176
68%	62%	54%



Susan B English

TOTAL # Change% Change



90		
84	-6	-6.7%
96	12	14.3%
85	-11	-11.5%
97	12	14.1%
90	-7	-7.2%
96	6	6.7%
88	-8	-8.3%
79	-9	-10.2%
79	0	0.0%
86	7	8.9%
75	-11	-12.8%
73	-2	-2.7%
66	-7	-9.6%
69	3	4.5%
68	-1	-1.4%
64	-4	-5.9%
66	2	3.1%
65	-1	-1.5%

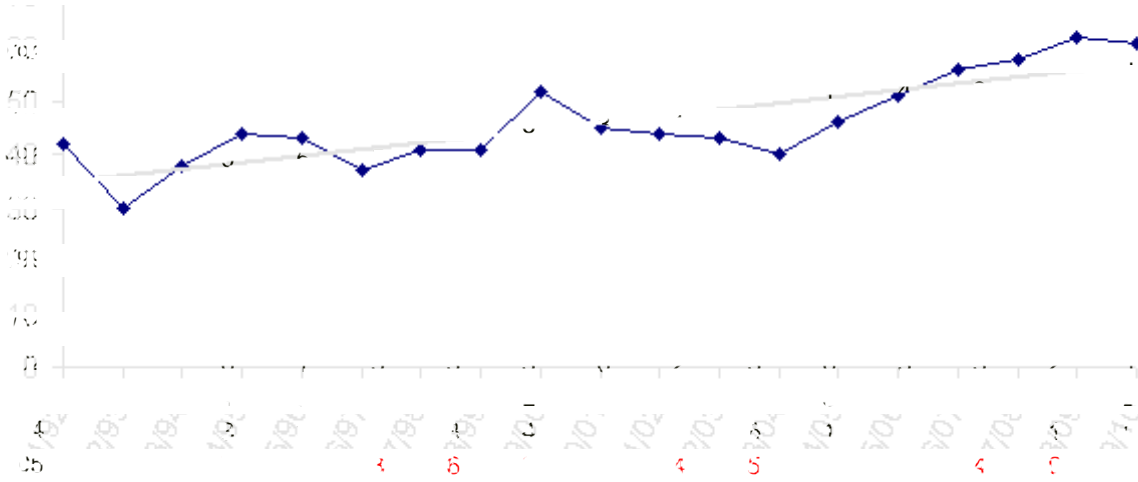
06/07	7	6	6	8	3	3	2	2	1	9	7	4	10	68	-1	-1.4%
07/08	6	7	6	6	8	3	3	2	2	1	9	7	4	64	-4	-5.9%
08/09	6	6	7	6	6	8	3	3	2	2	1	9	7	66	2	3.1%
09/10	6	6	6	7	6	6	8	3	3	2	2	1	9	65	-1	-1.5%

Building Capacity	200	
# enrolled and % of capacity		
<u>FY03</u>	<u>FY04</u>	<u>FY05</u>
75	73	66
38%	37%	33%



Tebughna

TOTAL # Change% Change



TOTAL	#	Change	% Change
	42		
	30	-12	-28.6%
	38	8	26.7%
	44	6	15.8%
	43	-1	-2.3%
	37	-6	-14.0%
	41	4	10.8%
	41	0	0.0%
	52	11	26.8%
	45	-7	-13.5%
	44	-1	-2.2%
	43	-1	-2.3%
	40	-3	-7.0%
	46	6	15.0%
	51	5	10.9%
	56	5	9.8%
	58	2	3.6%
	62	4	6.9%
	61	-1	-1.6%

06/07	5	5	7	3	3	6	3	4	4	5	6	1	4	56	5	9.8%
07/08	6	5	5	7	3	3	6	3	4	4	5	6	1	58	2	3.6%
08/09	5	6	5	5	7	3	3	6	3	4	4	5	6	62	4	6.9%
09/10	5	5	6	5	5	7	3	3	6	3	4	4	5	61	-1	-1.6%

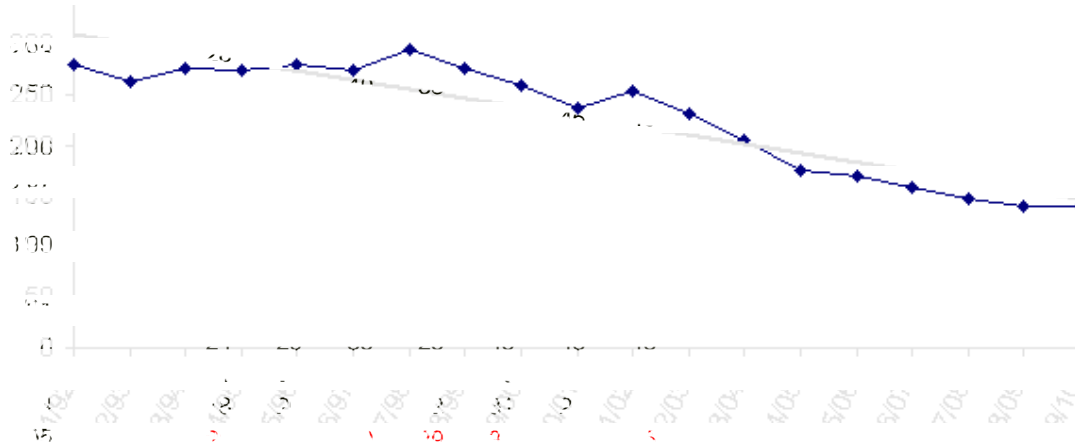
Building Capacity 125

enrolled and % of capacity

<u>FY03</u>	<u>FY04</u>	<u>FY05</u>
43	40	46
34%	32%	37%



Tustumena Elementary



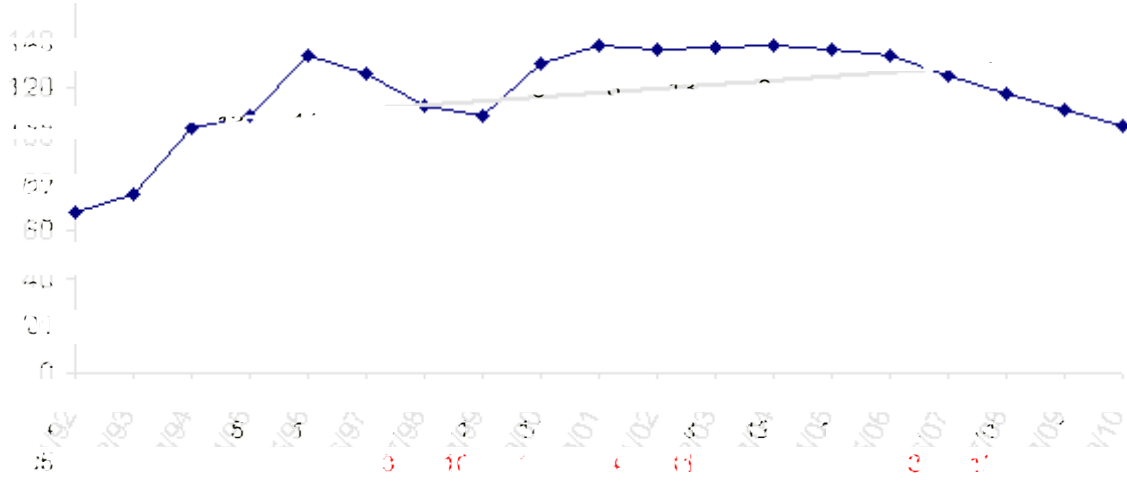
TOTAL	#	Change	% Change
280			
263	-17	-6.1%	
276	13	4.9%	
274	-2	-0.7%	
280	6	2.2%	
273	-7	-2.5%	
295	22	8.1%	
276	-19	-6.4%	
259	-17	-6.2%	
237	-22	-8.5%	
254	17	7.2%	
231	-23	-9.1%	
205	-26	-11.3%	
175	-30	-14.6%	
169	-6	-3.4%	
159	-10	-5.9%	
148	-11	-6.9%	
139	-9	-6.1%	
139	0	0.0%	

06/07	20	20	21	18	20	29	31
07/08	20	20	20	21	18	20	29
08/09	20	20	20	20	21	18	20
09/10	20	20	20	20	20	21	18

Building Capacity	400	
# enrolled and % of capacity		
<u>FY03</u>	<u>FY04</u>	<u>FY05</u>
231	205	175
58%	51%	44%



Voznesenka



TOTAL # Change% Change

68		
75	7	10.3%
103	28	37.3%
108	5	4.9%
134	26	24.1%
126	-8	-6.0%
113	-13	-10.3%
108	-5	-4.4%
130	22	20.4%
138	8	6.2%
136	-2	-1.4%
137	1	0.7%
138	1	0.7%
136	-2	-1.4%
134	-2	-1.5%
125	-9	-6.7%
118	-7	-5.6%
111	-7	-5.9%
104	-7	-6.3%

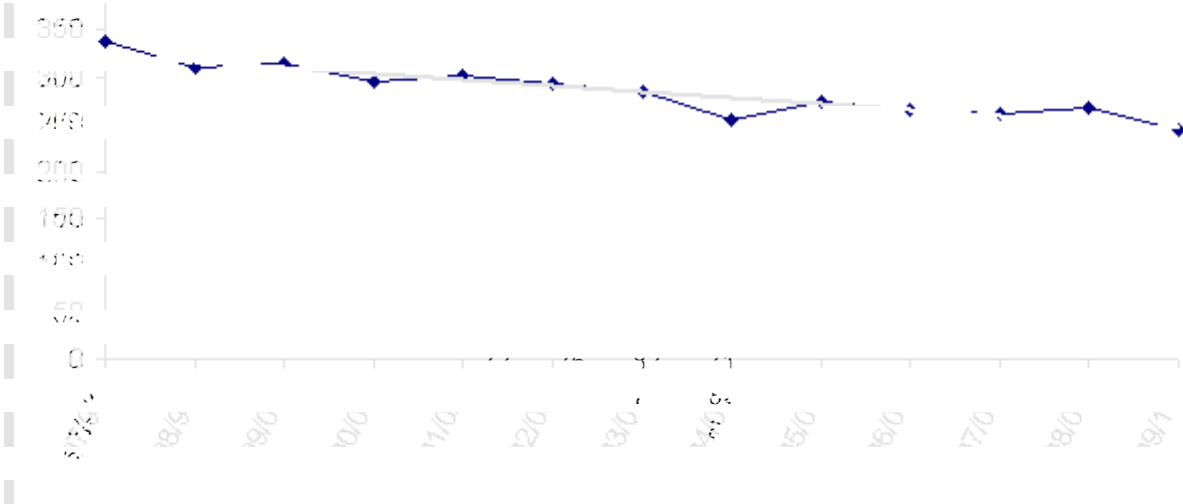
06/07	5	7	4	5	13	10	11	14	11	8	12	13	12	125	-9	-6.7%
07/08	5	5	7	4	5	13	10	11	14	11	8	12	13	118	-7	-5.6%
08/09	6	5	5	7	4	5	13	10	11	14	11	8	12	111	-7	-5.9%
09/10	5	6	5	5	7	4	5	13	10	11	14	11	8	104	-7	-6.3%

Building Capacity	150	
# enrolled and % of capacity		
<u>FY03</u>	<u>FY04</u>	<u>FY05</u>
137	138	136
91%	92%	91%



West Homer Elementary

TOTAL # Change% Change



TOTAL	# Change	% Change
338		
310	-28	-8.3%
315	5	1.6%
296	-19	-6.0%
301	5	1.7%
293	-8	-2.7%
285	-8	-2.7%
254	-31	-10.9%
273	19	7.5%
265	-8	-2.9%
262	-3	-1.1%
267	5	1.9%
244	-23	-8.6%

06/07	58	84	60	63	265	-8	-2.9%
07/08	60	58	84	60	262	-3	-1.1%
08/09	65	60	58	84	267	5	1.9%
09/10	61	65	60	58	244	-23	-8.6%

Building Capacity	500	
# enrolled and % of capacity		
<u>FY03</u>	<u>FY04</u>	<u>FY05</u>
293	285	254
59%	57%	51%



FY05 Enrollment Projection

	Pre K	K	1	2	3	4	5	6	7	8	9	10	11	12	Projection	FY04	Difference
Aurora Borealis	0	13	23	22	24	24	24	22	18	18	0	0	0	0	188	171	17
Chapman	0	15	22	17	13	13	15	22	13	16	0	0	0	0	146	144	2
Connections	0	33	41	38	25	34	32	23	34	51	52	31	54	52	500	506	(6)
Cooper Landing	0	2	1	2	2	2	2	1	2	0	0	0	0	0	14	13	1
Fireweed Academy	0	0	0	0	6	9	9	10	0	0	0	0	0	0	34	30	4
Homer Flex	0	0	0	0	0	0	0	0	0	0	6	11	15	18	50	38	12
Homer High	0	0	0	0	0	0	0	0	0	0	115	133	106	95	449	461	(12)
Homer Middle	0	0	0	0	0	0	0	0	112	123	0	0	0	0	235	229	6
Hope	0	2	2	1	1	2	1	3	4	2	0	3	1	0	22	20	2
Kachemak Selo	0	7	7	10	9	6	10	5	7	8	7	3	5	1	85	83	2
Kaleidoscope	0	0	44	26	18	0	0	0	0	0	0	0	0	0	88	0	88
K-Beach	0	52	55	66	57	53	56	72	0	0	0	0	0	0	411	440	(29)
Kenai Alternative	0	0	0	0	0	0	0	0	0	0	17	24	21	23	85	77	8
Kenai Central High	0	0	0	0	0	0	0	0	0	0	122	146	124	128	520	502	18
Kenai Middle	0	0	0	0	0	0	0	107	130	117	0	0	0	0	354	376	(22)
Kenai Youth Facility	0	0	0	0	0	0	0	0	1	1	2	2	2	2	10	10	0
McNeil Canyon	0	17	21	21	14	10	13	15	0	0	0	0	0	0	111	113	(2)
Montessori Charter	0	25	27	27	10	17	3	2	0	0	0	0	0	0	111	89	22
Moose Pass	0	4	4	3	3	6	4	5	2	4	0	0	0	0	35	33	2
Mountain View	0	0	0	0	85	108	116	0	0	0	0	0	0	0	309	337	(28)
Nanwalek	0	4	3	7	7	3	4	9	5	6	4	6	2	4	64	63	1
Nikiski Elementary	0	0	0	0	0	0	0	0	0	0	0	0	0	0	0	179	(179)
Nikiski North Star	0	37	37	57	38	64	71	74	0	0	0	0	0	0	378	224	154
Nikiski Middle/Senior	0	0	0	0	0	0	0	0	55	78	74	72	66	73	418	476	(58)
Nikolaevsk	0	6	6	6	7	5	3	4	8	8	7	12	7	9	88	89	(1)
Ninilchik	0	7	10	2	5	9	13	12	20	15	29	15	17	15	169	181	(12)
Paul Banks	0	60	58	84	0	0	0	0	0	0	0	0	0	0	202	214	(12)
Port Graham	0	2	2	1	2	2	2	3	0	7	6	2	0	0	29	30	(1)
Razdolna	0	4	5	2	4	2	4	5	2	4	2	2	3	0	39	36	3
Redoubt	0	50	42	61	53	54	58	59	0	0	0	0	0	0	377	407	(30)
Sears	0	110	57	67	0	0	0	0	0	0	0	0	0	0	234	302	(68)
Seward Elem	0	43	41	50	37	47	40	43	0	0	0	0	0	0	301	323	(22)
Seward High	0	0	0	0	0	0	0	0	0	0	64	63	51	66	244	274	(30)
Seward Middle	0	0	0	0	0	0	0	0	56	62	0	0	0	0	118	116	2
Skyview	0	0	0	0	0	0	0	0	0	0	136	136	142	130	544	556	(12)
Soldotna Elem	0	51	30	32	33	40	39	54	0	0	0	0	0	0	279	292	(13)
Soldotna High	0	0	0	0	0	0	0	0	0	0	136	152	139	108	535	516	19
Soldotna Middle	0	0	0	0	0	0	0	0	280	266	0	0	0	0	546	536	10
Spring Creek	0	0	0	0	0	0	0	0	0	0	20	10	13	12	55	37	18
Sterling	0	24	22	24	14	29	27	36	0	0	0	0	0	0	176	203	(27)
Susan B English	0	6	8	3	3	2	2	1	9	7	4	10	8	3	66	73	(7)
Tebughna	0	7	3	3	6	3	4	4	5	6	1	4	0	0	46	40	6
Tustumena	0	21	18	20	29	31	30	26	0	0	0	0	0	0	175	205	(30)
Voznesenka	0	4	5	13	10	11	14	11	8	12	13	12	14	9	136	138	(2)

West Homer	0	0	0	0	60	63	66	65	0	0	0	0	0	0	0	254	285	(31)
	0	606	594	665	575	649	662	693	771	811	817	849	790	748	9230	9467	(237)	

Revised April 2004



FY06 Enrollment Projection

	Pre K	K	1	2	3	4	5	6	7	8	9	10	11	12	Projection	FY04	Difference
Aurora Borealis	0	22	23	22	24	24	24	22	18	18	0	0	0	0	197	171	26
Chapman	0	17	15	22	17	13	13	15	22	13	0	0	0	0	147	144	3
Connections	0	34	42	39	26	35	33	24	35	52	53	32	55	53	513	506	7
Cooper Landing	0	2	2	1	2	2	2	2	1	2	0	0	0	0	16	13	3
Fireweed Academy	0	0	0	0	5	5	9	9	10	0	0	0	0	0	38	30	8
Homer Flex	0	0	0	0	0	0	0	0	0	0	6	11	15	18	50	38	12
Homer High	0	0	0	0	0	0	0	0	0	0	139	115	133	106	493	461	32
Homer Middle	0	0	0	0	0	0	0	0	90	112	0	0	0	0	202	229	(27)
Hope	0	2	2	2	1	1	2	1	3	4	2	0	3	1	24	20	4
Kachemak Selo	0	8	7	7	10	9	6	10	5	7	8	6	3	5	91	83	8
Kaleidoscope	0	0	44	44	26	0	0	0	0	0	0	0	0	0	114	0	
K-Beach	0	53	52	55	66	57	53	56	0	0	0	0	0	0	392	440	(48)
Kenai Alternative	0	0	0	0	0	0	0	0	0	0	20	17	24	21	82	77	5
Kenai Central High	0	0	0	0	0	0	0	0	0	0	117	122	146	124	509	502	7
Kenai Middle	0	0	0	0	0	0	0	116	107	130	0	0	0	0	353	376	(23)
Kenai Youth Facility	0	0	0	0	0	0	0	0	1	1	2	2	2	2	10	10	0
McNeil Canyon	0	20	17	21	21	14	10	13	0	0	0	0	0	0	116	113	3
Montessori Charter	0	10	25	27	27	0	0	0	0	0	0	0	0	0	89	89	0
Moose Pass	0	4	4	4	3	3	6	4	5	2	0	0	0	0	35	33	2
Mountain View	0	0	0	0	67	85	108	0	0	0	0	0	0	0	260	337	(77)
Nanwalek	0	5	4	3	7	7	3	4	9	5	6	4	6	2	65	63	2
Nikiski Elementary	0	0	0	0	0	0	0	0	0	0	0	0	0	0	0	179	(179)
Nikiski Middle/Senior	0	0	0	0	0	0	0	0	74	55	78	74	72	66	419	476	(57)
Nikiski North Star	0	44	37	37	57	38	64	71	0	0	0	0	0	0	348	224	124
Nikolaevsk	0	5	6	6	6	7	5	3	4	8	8	7	12	7	84	89	(5)
Ninilchik	0	7	7	10	2	5	9	13	12	20	15	29	15	17	161	181	(20)
Paul Banks	0	65	60	58	0	0	0	0	0	0	0	0	0	0	183	214	(31)
Port Graham	0	1	2	2	1	2	2	2	3	0	7	6	0	0	28	30	(2)
Razdolna	0	4	4	5	2	4	2	4	5	2	4	2	2	3	43	36	7
Redoubt	0	49	50	42	61	53	54	58	0	0	0	0	0	0	367	407	(40)
Sears	0	99	110	57	0	0	0	0	0	0	0	0	0	0	266	302	(36)
Seward Elem	0	45	43	41	50	37	47	40	0	0	0	0	0	0	303	323	(20)
Seward High	0	0	0	0	0	0	0	0	0	0	62	64	63	51	240	274	(34)
Seward Middle	0	0	0	0	0	0	0	0	47	56	0	0	0	0	103	116	(13)
Skyview	0	0	0	0	0	0	0	0	0	0	143	136	136	142	557	556	1
Soldotna Elem	0	39	51	30	32	33	40	39	0	0	0	0	0	0	264	292	(28)
Soldotna High	0	0	0	0	0	0	0	0	0	0	143	136	152	139	570	516	54
Soldotna Middle	0	0	0	0	0	0	0	0	247	280	0	0	0	0	527	536	(9)

Spring Creek	0	0	0	0	0	0	0	0	0	0	20	10	13	12	55	37	18
Sterling	0	24	24	22	24	14	29	27	0	0	0	0	0	0	164	203	(39)
Susan B English	0	6	6	8	3	3	2	2	1	9	7	4	10	8	69	73	(4)
Tebughna	0	5	7	3	3	6	3	4	4	5	6	1	4	0	51	40	11
Tustumena	0	20	21	18	20	29	31	30	0	0	0	0	0	0	169	205	(36)
Voznesenka	0	7	4	5	13	10	11	14	11	8	12	13	12	14	134	138	(4)
West Homer	0	0	0	0	84	60	63	66	0	0	0	0	0	0	273	285	(12)
	0	597	669	591	660	556	631	649	714	789	858	791	878	791	9174	9467	(407)



FY07 Enrollment Projection

	Pre K	K	1	2	3	4	5	6	7	8	9	10	11	12	Projection	FY04	Difference
Aurora Borealis	0	22	23	22	24	24	24	22	18	18	0	0	0	0	197	171	26
Chapman	0	18	17	15	22	17	13	13	15	22	0	0	0	0	152	144	8
Connections	0	35	43	40	27	36	34	25	36	53	54	33	56	54	526	506	20
Cooper Landing	0	2	2	2	1	2	2	2	2	1	0	0	0	0	16	13	3
Fireweed Academy	0	0	0	0	5	5	5	9	9	10	0	0	0	0	43	30	13
Homer Flex	0	0	0	0	0	0	0	0	0	0	6	11	15	18	50	38	12
Homer High	0	0	0	0	0	0	0	0	0	0	125	139	115	133	512	461	51
Homer Middle	0	0	0	0	0	0	0	0	88	90	0	0	0	0	178	229	(51)
Hope	0	2	2	2	2	1	1	2	1	3	4	2	0	3	25	20	5
Kachemak Selo	0	7	8	7	7	10	9	6	10	5	7	5	3	3	87	83	4
Kaleidoscope	0	0	44	44	44	0	0	0	0	0	0	0	0	0	132	0	
K-Beach	0	54	53	52	55	66	57	53	0	0	0	0	0	0	390	440	(50)
Kenai Alternative	0	0	0	0	0	0	0	0	0	0	19	20	17	24	80	77	3
Kenai Central High	0	0	0	0	0	0	0	0	0	0	130	117	122	146	515	502	13
Kenai Middle	0	0	0	0	0	0	0	108	116	107	0	0	0	0	331	376	(45)
Kenai Youth Facility	0	0	0	0	0	0	0	0	1	1	2	2	2	2	10	10	0
McNeil Canyon	0	19	20	17	21	21	14	10	0	0	0	0	0	0	122	113	9
Montessori Charter	0	15	12	25	8	0	0	0	0	0	0	0	0	0	60	89	(29)
Moose Pass	0	4	4	4	4	3	3	6	4	5	0	0	0	0	37	33	4
Mountain View	0	0	0	0	57	67	85	0	0	0	0	0	0	0	209	337	(128)
Nanwalek	0	4	5	4	3	7	7	3	4	9	5	6	4	6	67	63	4
Nikiski Elementary	0	0	0	0	0	0	0	0	0	0	0	0	0	0	0	179	(179)
Nikiski Middle/Senior	0	0	0	0	0	0	0	0	71	74	55	78	74	72	424	476	(52)
Nikiski North Star	0	46	44	37	37	57	38	64	0	0	0	0	0	0	323	224	99
Nikolaevsk	0	6	5	6	6	6	7	5	3	4	8	8	7	12	83	89	(6)
Ninilchik	0	8	7	7	10	2	5	9	13	12	20	15	29	15	152	181	(29)
Paul Banks	0	61	65	60	0	0	0	0	0	0	0	0	0	0	186	214	(28)
Port Graham	0	1	1	2	2	1	2	2	2	3	0	7	0	0	23	30	(7)
Razdolna	0	4	4	4	5	2	4	2	4	5	2	4	2	2	44	36	8
Redoubt	0	47	49	50	42	61	53	54	0	0	0	0	0	0	356	407	(51)
Sears	0	104	99	110	0	0	0	0	0	0	0	0	0	0	313	302	11
Seward Elem	0	43	45	43	41	50	37	47	0	0	0	0	0	0	306	323	(17)
Seward High	0	0	0	0	0	0	0	0	0	0	56	62	64	63	245	274	(29)
Seward Middle	0	0	0	0	0	0	0	0	42	47	0	0	0	0	89	116	(27)
Skyview	0	0	0	0	0	0	0	0	0	0	153	143	136	136	568	556	12
Soldotna Elem	0	40	39	51	30	32	33	40	0	0	0	0	0	0	265	292	(27)
Soldotna High	0	0	0	0	0	0	0	0	0	0	153	143	136	152	584	516	68
Soldotna Middle	0	0	0	0	0	0	0	0	210	247	0	0	0	0	457	536	(79)
Spring Creek	0	0	0	0	0	0	0	0	0	0	20	10	13	12	55	37	18

Sterling	0	23	24	24	22	24	14	29	0	0	0	0	0	0	160	203	(43)
Susan B English	0	7	6	6	8	3	3	2	2	1	9	7	4	10	68	73	(5)
Tebughna	0	5	5	7	3	3	6	3	4	4	5	6	1	4	56	40	16
Tustumena	0	20	20	21	18	20	29	31	0	0	0	0	0	0	159	205	(46)
Voznesenka	0	5	7	4	5	13	10	11	14	11	8	12	13	12	125	138	(13)
West Homer	0	0	0	0	58	84	60	63	0	0	0	0	0	0	265	285	(20)
	0	602	653	666	567	617	555	621	669	732	841	830	813	879	9045	9467	(554)



FY08 Enrollment Projection

	Pre K	K	1	2	3	4	5	6	7	8	9	10	11	12	Projection	FY04	Difference
Aurora Borealis	0	22	23	22	24	24	24	22	18	18	0	0	0	0	197	171	26
Chapman	0	17	18	17	15	22	17	13	13	15	0	0	0	0	147	144	3
Connections	0	36	44	41	28	37	35	26	37	54	55	34	57	55	539	506	33
Cooper Landing	0	2	2	2	2	1	2	2	2	2	0	0	0	0	17	13	4
Fireweed Academy	0	0	0	0	5	5	5	5	9	9	0	0	0	0	38	30	8
Homer Flex	0	0	0	0	0	0	0	0	0	0	6	11	15	18	50	38	12
Homer High	0	0	0	0	0	0	0	0	0	0	112	125	139	115	491	461	30
Homer Middle	0	0	0	0	0	0	0	0	82	88	0	0	0	0	170	229	(59)
Hope	0	2	2	2	2	2	1	1	2	1	3	4	2	0	24	20	4
Kachemak Selo	0	7	7	8	7	7	10	9	6	10	5	5	4	3	88	83	5
Kaleidoscope	0	0	44	44	44	0	0	0	0	0	0	0	0	0	132	0	
K-Beach	0	53	54	53	52	55	66	57	0	0	0	0	0	0	390	440	(50)
Kenai Alternative	0	0	0	0	0	0	0	0	0	0	21	21	21	17	80	77	3
Kenai Central High	0	0	0	0	0	0	0	0	0	0	107	130	117	122	476	502	(26)
Kenai Middle	0	0	0	0	0	0	0	85	108	116	0	0	0	0	309	376	(67)
Kenai Youth Facility	0	0	0	0	0	0	0	0	1	1	2	2	2	2	10	10	0
McNeil Canyon	0	19	19	20	17	21	21	14	0	0	0	0	0	0	131	113	18
Montessori Charter	0	17	12	11	25	0	0	0	0	0	0	0	0	0	65	89	(24)
Moose Pass	0	4	4	4	4	4	3	3	6	4	0	0	0	0	36	33	3
Mountain View	0	0	0	0	110	57	67	0	0	0	0	0	0	0	234	337	(103)
Nanwalek	0	4	4	5	4	3	7	7	3	4	9	5	6	4	65	63	2
Nikiski Elementary	0	0	0	0	0	0	0	0	0	0	0	0	0	0	0	179	(179)
Nikiski Middle/Senior	0	0	0	0	0	0	0	0	64	71	74	55	78	74	416	476	(60)
Nikiski North Star	0	42	46	44	37	37	57	38	0	0	0	0	0	0	301	224	77
Nikolaevsk	0	6	6	5	6	6	6	7	5	3	4	8	8	7	77	89	(12)
Ninilchik	0	7	8	7	7	10	2	5	9	13	12	20	15	29	144	181	(37)
Paul Banks	0	62	61	65	0	0	0	0	0	0	0	0	0	0	188	214	(26)
Port Graham	0	1	1	1	2	2	1	2	2	2	3	0	0	0	17	30	(13)
Razdolna	0	4	4	4	4	5	2	4	2	4	5	2	4	2	46	36	10
Redoubt	0	49	47	49	50	42	61	53	0	0	0	0	0	0	351	407	(56)
Sears	0	104	104	99	0	0	0	0	0	0	0	0	0	0	307	302	5
Seward Elem	0	44	43	45	43	41	50	37	0	0	0	0	0	0	303	323	(20)
Seward High	0	0	0	0	0	0	0	0	0	0	47	56	62	64	229	274	(45)
Seward Middle	0	0	0	0	0	0	0	0	52	42	0	0	0	0	94	116	(22)
Skyview	0	0	0	0	0	0	0	0	0	0	137	153	143	136	569	556	13
Soldotna Elem	0	43	40	39	51	30	32	33	0	0	0	0	0	0	268	292	(24)
Soldotna High	0	0	0	0	0	0	0	0	0	0	137	153	143	136	569	516	53
Soldotna Middle	0	0	0	0	0	0	0	0	207	210	0	0	0	0	417	536	(119)
Spring Creek	0	0	0	0	0	0	0	0	0	0	20	10	13	12	55	37	18
Sterling	0	24	23	24	24	22	24	14	0	0	0	0	0	0	155	203	(48)
Susan B English	0	6	7	6	6	8	3	3	2	2	1	9	7	4	64	73	(9)
Tebughna	0	6	5	5	7	3	3	6	3	4	4	5	6	1	58	40	18
Tustumena	0	20	20	20	21	18	20	29	0	0	0	0	0	0	148	205	(57)
Voznesenka	0	5	5	7	4	5	13	10	11	14	11	8	12	13	118	138	(20)

West Homer

0	0	0	0	60	58	84	60	0	0	0	0	0	0	262	285	(23)
0	606	653	649	661	525	616	545	644	687	775	816	854	814	8845	9467	(754)



FY09 Enrollment Projection

	Pre K	K	1	2	3	4	5	6	7	8	9	10	11	12	Projection	FY04	Difference
Aurora Borealis	0	22	23	22	24	24	24	22	18	18	0	0	0	0	197	171	26
Chapman	0	17	17	18	17	15	22	17	13	13	0	0	0	0	149	144	5
Connections	0	37	45	42	29	38	36	27	38	55	56	35	58	56	552	506	46
Cooper Landing	0	2	2	2	2	2	1	2	2	2	0	0	0	0	17	13	4
Fireweed Academy	0	0	0	0	5	5	5	5	5	9	0	0	0	0	34	30	4
Homer Flex	0	0	0	0	0	0	0	0	0	0	6	11	15	18	50	38	12
Homer High	0	0	0	0	0	0	0	0	0	0	103	112	125	139	479	461	18
Homer Middle	0	0	0	0	0	0	0	0	79	82	0	0	0	0	161	229	(68)
Hope	0	2	2	2	2	2	2	1	1	2	1	3	4	2	26	20	6
Kachemak Selo	0	7	7	7	8	7	7	10	9	6	10	5	3	4	90	83	7
Kaleidoscope	0	0	44	44	44	0	0	0	0	0	0	0	0	0	132	0	
K-Beach	0	53	53	54	53	52	55	66	0	0	0	0	0	0	386	440	(54)
Kenai Alternative	0	0	0	0	0	0	0	0	0	0	20	20	20	20	80	77	3
Kenai Central High	0	0	0	0	0	0	0	0	0	0	116	107	130	117	470	502	(32)
Kenai Middle	0	0	0	0	0	0	0	67	85	108	0	0	0	0	260	376	(116)
Kenai Youth Facility	0	0	0	0	0	0	0	0	1	1	2	2	2	2	10	10	0
McNeil Canyon	0	19	19	19	20	17	21	21	0	0	0	0	0	0	136	113	23
Montessori Charter	0	14	11	11	11	0	0	0	0	0	0	0	0	0	47	89	(42)
Moose Pass	0	4	4	4	4	4	4	3	3	6	0	0	0	0	36	33	3
Mountain View	0	0	0	0	99	110	57	0	0	0	0	0	0	0	266	337	(71)
Nanwalek	0	4	4	4	5	4	3	7	7	3	4	9	5	6	65	63	2
Nikiski Elementary	0	0	0	0	0	0	0	0	0	0	0	0	0	0	0	179	(179)
Nikiski Middle/Senior	0	0	0	0	0	0	0	0	38	64	71	74	55	78	380	476	(96)
Nikiski North Star	0	44	42	46	44	37	37	57	0	0	0	0	0	0	307	224	83
Nikolaevsk	0	6	6	6	5	6	6	6	7	5	3	4	8	8	76	89	(13)
Ninilchik	0	7	7	8	7	7	10	2	5	9	13	12	20	15	122	181	(59)
Paul Banks	0	63	62	61	0	0	0	0	0	0	0	0	0	0	186	214	(28)
Port Graham	0	1	1	1	1	2	2	1	2	2	2	3	0	0	18	30	(12)
Razdolna	0	4	4	4	4	4	5	2	4	2	4	5	2	4	48	36	12
Redoubt	0	48	49	47	49	50	42	61	0	0	0	0	0	0	346	407	(61)
Sears	0	102	104	104	0	0	0	0	0	0	0	0	0	0	310	302	8
Seward Elem	0	44	44	43	45	43	41	50	0	0	0	0	0	0	310	323	(13)
Seward High	0	0	0	0	0	0	0	0	0	0	42	47	56	62	207	274	(67)
Seward Middle	0	0	0	0	0	0	0	0	41	52	0	0	0	0	93	116	(23)
Skyview	0	0	0	0	0	0	0	0	0	0	115	137	153	143	548	556	(8)
Soldotna Elem	0	41	43	40	39	51	30	32	0	0	0	0	0	0	276	292	(16)
Soldotna High	0	0	0	0	0	0	0	0	0	0	115	137	153	143	548	516	32
Soldotna Middle	0	0	0	0	0	0	0	0	186	207	0	0	0	0	393	536	(143)
Spring Creek	0	0	0	0	0	0	0	0	0	0	20	10	13	12	55	37	18
Sterling	0	24	24	23	24	24	22	24	0	0	0	0	0	0	165	203	(38)
Susan B English	0	6	6	7	6	6	8	3	3	2	2	1	9	7	66	73	(7)
Tebughna	0	5	6	5	5	7	3	3	6	3	4	4	5	6	62	40	22
Tustumena	0	20	20	20	20	21	18	20	0	0	0	0	0	0	139	205	(66)
Voznesenka	0	6	5	5	7	4	5	13	10	11	14	11	8	12	111	138	(27)

West Homer

0	0	0	0	65	60	58	84	0	0	0	0	0	0	267	285	(18)
0	602	654	649	644	602	524	606	563	662	723	749	844	854	8676	9467	(923)



FY10 Enrollment Projection

	Pre K	K	1	2	3	4	5	6	7	8	9	10	11	12	Projection	FY04	Difference
Aurora Borealis	0	23	23	22	24	24	24	22	18	18	0	0	0	0	198	171	27
Chapman	0	17	17	17	18	17	15	22	17	13	0	0	0	0	153	144	9
Connections	0	38	46	43	30	39	37	28	39	56	57	36	59	57	565	506	59
Cooper Landing	0	2	2	2	2	2	2	1	2	2	0	0	0	0	17	13	4
Fireweed Academy	0	0	0	0	5	5	5	5	5	5	0	0	0	0	30	30	0
Homer Flex	0	0	0	0	0	0	0	0	0	0	6	11	15	18	50	38	12
Homer High	0	0	0	0	0	0	0	0	0	0	95	103	112	125	435	461	(26)
Homer Middle	0	0	0	0	0	0	0	0	110	79	0	0	0	0	189	229	(40)
Hope	0	2	2	2	2	2	2	2	1	1	2	1	3	4	26	20	6
Kachemak Selo	0	7	7	7	7	8	7	7	10	9	6	5	3	3	86	83	3
Kaleidoscope	0	0	44	44	44	0	0	0	0	0	0	0	0	0	132	0	
K-Beach	0	53	53	53	54	53	52	55	0	0	0	0	0	0	373	440	(67)
Kenai Alternative	0	0	0	0	0	0	0	0	0	0	20	20	20	20	80	77	3
Kenai Central High	0	0	0	0	0	0	0	0	0	0	108	116	107	130	461	502	(41)
Kenai Middle	0	0	0	0	0	0	0	57	67	85	0	0	0	0	209	376	(167)
Kenai Youth Facility	0	0	0	0	0	0	0	0	1	1	2	2	2	2	10	10	0
McNeil Canyon	0	19	19	19	19	20	17	21	0	0	0	0	0	0	134	113	21
Montessori Charter	0	15	11	11	11	0	0	0	0	0	0	0	0	0	48	89	(41)
Moose Pass	0	4	4	4	4	4	4	4	3	3	0	0	0	0	34	33	1
Mountain View	0	0	0	0	104	99	110	0	0	0	0	0	0	0	313	337	(24)
Nanwalek	0	4	4	4	4	5	4	3	7	7	3	4	9	5	63	63	0
Nikiski Elementary	0	0	0	0	0	0	0	0	0	0	0	0	0	0	0	179	(179)
Nikiski Middle/Senior	0	0	0	0	0	0	0	0	57	38	64	71	74	55	359	476	(117)
Nikiski North Star	0	44	44	42	46	44	37	37	0	0	0	0	0	0	294	224	70
Nikolaevsk	0	6	6	6	6	5	6	6	6	7	5	3	4	8	74	89	(15)
Ninilchik	0	7	7	7	8	7	7	10	2	5	9	13	12	20	114	181	(67)
Paul Banks	0	62	63	62	0	0	0	0	0	0	0	0	0	0	187	214	(27)
Port Graham	0	1	1	1	1	1	2	2	1	2	2	2	0	0	16	30	(14)
Razdolna	0	4	4	4	4	4	4	5	2	4	2	4	5	2	48	36	12
Redoubt	0	48	48	49	47	49	50	42	0	0	0	0	0	0	333	407	(74)
Sears	0	103	102	104	0	0	0	0	0	0	0	0	0	0	309	302	7
Seward Elem	0	44	44	44	43	45	43	41	0	0	0	0	0	0	304	323	(19)
Seward High	0	0	0	0	0	0	0	0	0	0	52	42	47	56	197	274	(77)
Seward Middle	0	0	0	0	0	0	0	0	56	41	0	0	0	0	97	116	(19)
Skyview	0	0	0	0	0	0	0	0	0	0	115	115	137	153	520	556	(36)
Soldotna Elem	0	41	41	43	40	39	51	30	0	0	0	0	0	0	285	292	(7)
Soldotna High	0	0	0	0	0	0	0	0	0	0	115	115	137	153	520	516	4
Soldotna Middle	0	0	0	0	0	0	0	0	203	186	0	0	0	0	389	536	(147)
Spring Creek	0	0	0	0	0	0	0	0	0	0	20	10	13	12	55	37	18

Sterling	0	24	24	24	23	24	24	22	0	0	0	0	0	0	165	203	(38)
Susan B English	0	6	6	6	7	6	6	8	3	3	2	2	1	9	65	73	(8)
Tebughna	0	5	5	6	5	5	7	3	3	6	3	4	4	5	61	40	21
Tustumena	0	20	20	20	20	20	21	18	0	0	0	0	0	0	139	205	(66)
Voznesenka	0	5	6	5	5	7	4	5	13	10	11	14	11	8	104	138	(34)
West Homer	0	0	0	0	61	65	60	58	0	0	0	0	0	0	244	285	(41)
	0	604	653	651	644	599	601	514	626	581	699	693	775	845	8485	9467	(1114)



The State Board of Education & Early Development adopted a regulation in 2001 that required the Department of Education & Early Development to assign no later than August 31, 2002, an individual student identification number for each student in the state. To accomplish this, the department has implemented a high security, password protected, web-based system that assigns these numbers. School districts will use this number when they report electronic student information to the department including test scores.

The number will be unique to each student and will not be a Social Security number. The number will enable the department to better analyze student information and make informed policy decisions. Additionally, the number will allow for more accurate reports of school and student performance to the governor, legislature and public.

The student identification number is for department use only and becomes part of a student's school record. The number does not change if a student moves from one Alaska district to another. Beyond its use by the department for data analysis purposes, the student identification number has no other purpose or significance.

What is OASIS?

On-line **A**laska **S**chool **I**nformation **S**ystem is operated by the Office of Assessments and Student Information in the Division of Teaching and Learning Support. The responsibilities of this office include the collection, analysis and publication of student and education information.

- This information was gathered from the State of Alaska, Department of Education & Early Development website

All school districts in Alaska participate in the so-called "Twenty Day Count" beginning approximately October 1 every year and ending on the fourth Friday of October. Each student is counted at the school where he or she is enrolled and the numbers are forwarded to the state for verification. Through the use of the unique student identification numbers, districts are able to determine which students are "theirs" and which students have transferred to other districts or out of state. Once the counts are verified for actual students, the amount of time they are enrolled in school (full-time, part-time) is calculated by grade at each school in each district. Since the calculations include part-time students, they rarely add up to whole numbers and comparison of OASIS numbers with enrollment projections is problematic. For that reason, the OASIS calculations are reported separately with a comparison to current enrollment figures.

FY04 is the first year that OASIS numbers are available broken down by grade at each school. Previously, they were only available as a school total.



FY04 OASIS ADM

	Pre K	K	1	2	3	4	5	6	7	8	9	10	11	12	Total OASIS	Total FY04	Difference
Aurora Borealis	0.00	21.95	21.00	23.00	23.00	23.00	19.75	13.00	12.00	11.00	0.00	0.00	0.00	0.00	167.70	171.00	(3.30)
Chapman	0.00	21.45	17.00	13.80	13.00	15.75	21.75	13.00	15.15	13.00	0.00	0.00	0.00	0.00	143.90	144.00	(0.10)
Connections	0.00	48.19	48.05	28.05	45.50	36.20	28.30	35.05	57.50	55.65	33.70	60.30	52.55	40.27	569.31	506.00	63.31
Cooper Landing	0.00	1.00	2.00	2.00	2.00	2.00	1.00	2.00	1.00	0.00	0.00	0.00	0.00	0.00	13.00	13.00	0.00
Fireweed Academy	0.00	0.00	0.00	0.00	5.00	8.00	10.00	7.00	0.00	0.00	0.00	0.00	0.00	0.00	30.00	30.00	0.00
Homer Flex	0.00	0.00	0.00	0.00	0.00	0.00	0.00	0.00	0.00	0.00	5.30	11.25	12.45	12.95	41.95	38.00	3.95
Homer High	0.00	0.00	0.00	0.00	0.00	0.00	0.00	0.00	0.00	0.00	144.40	128.45	102.25	92.05	467.15	461.00	6.15
Homer Middle	0.00	0.00	0.00	0.00	0.00	0.00	0.00	0.00	127.00	105.85	0.00	0.00	0.00	0.00	232.85	229.00	3.85
Hope	0.00	1.75	1.00	0.75	1.95	1.00	2.25	4.00	2.00	0.00	2.85	1.00	0.00	0.00	18.55	20.00	(1.45)
Kachemak Selo	0.00	6.65	8.55	8.55	4.75	8.55	4.75	6.65	7.60	6.65	2.85	4.75	0.95	1.90	73.15	73.15	0.00
K-Beach	0.00	57.12	64.95	58.45	53.20	57.70	73.50	75.20	0.00	0.00	0.00	0.00	0.00	0.00	440.12	440.00	0.12
Kenai Alternative	0.00	0.00	0.00	0.00	0.00	0.00	0.00	0.00	0.00	0.00	23.55	19.33	21.80	14.80	79.48	77.00	2.48
Kenai Central High	0.00	0.00	0.00	0.00	0.00	0.00	0.00	0.00	0.00	1.00	151.05	125.90	132.55	93.75	504.25	502.00	2.25
Kenai Middle	0.00	0.00	0.00	0.00	0.00	0.00	0.00	135.45	117.15	123.50	0.50	0.00	0.00	0.00	376.60	376.00	0.60
Kenai Youth Facility	0.00	0.00	0.00	0.00	0.00	0.00	0.00	0.00	1.00	1.00	2.00	2.00	2.00	2.00	10.00	10.00	0.00
McNeil Canyon	0.00	21.25	21.00	13.20	10.00	13.00	14.25	19.00	0.00	0.00	0.00	0.00	0.00	0.00	111.70	113.00	(1.30)
Montessori Charter	0.00	29.00	22.00	10.00	19.25	4.00	2.00	3.00	0.00	0.00	0.00	0.00	0.00	0.00	89.25	89.00	0.25
Moose Pass	0.00	4.45	3.45	3.90	6.25	4.00	5.65	2.00	4.00	2.00	0.00	0.00	0.00	0.00	35.70	33.00	2.70
Mountain View	0.00	0.00	0.00	0.00	110.35	119.23	108.70	0.00	0.00	0.00	0.00	0.00	0.00	0.00	338.28	337.00	1.28
Nanwalek	0.00	3.00	7.00	7.00	3.00	4.00	9.00	5.00	6.00	4.00	6.00	2.00	4.00	3.00	63.00	63.00	0.00
Nikiski Elem	0.00	19.25	33.30	12.55	24.00	32.45	29.00	27.20	0.00	0.00	0.00	0.00	0.00	0.00	177.75	179.00	(1.25)
Nikiski Middle/ Senior	0.00	0.00	0.00	0.00	0.00	0.00	0.00	0.00	79.65	86.00	81.80	69.05	84.40	73.35	474.25	476.00	(1.75)
Nikolaevsk	0.00	6.00	6.00	7.00	5.00	3.00	4.00	8.00	8.00	7.00	12.00	7.00	9.00	7.00	89.00	89.00	0.00
Ninilchik	0.00	12.65	2.00	5.00	9.00	13.00	12.25	20.30	15.00	30.05	14.25	17.25	15.00	16.00	181.75	181.00	0.75
North Star	0.00	19.25	24.10	26.10	41.55	38.70	46.05	29.00	0.00	0.00	0.00	0.00	0.00	0.00	224.75	224.00	0.75
Paul Banks	0.00	62.30	86.00	61.00	0.00	0.00	0.00	0.00	0.00	0.00	0.00	0.00	0.00	0.00	209.30	214.00	(4.70)
Port Graham	0.00	2.10	1.00	2.00	2.00	2.00	3.00	0.00	7.00	4.50	2.75	2.75	0.00	0.00	29.10	30.00	(0.90)
Razdolna	0.00	4.75	1.75	4.00	2.00	4.00	5.00	3.00	3.00	2.00	2.00	3.00	1.00	0.00	35.50	36.00	(0.50)
Redoubt	0.00	44.15	62.70	54.00	55.40	59.70	60.00	74.50	0.00	0.00	0.00	0.00	0.00	0.00	410.45	407.00	3.45
Sears	0.00	118.90	84.00	105.10	0.00	0.00	0.00	0.00	0.00	0.00	0.00	0.00	0.00	0.00	308.00	302.00	6.00
Seward Elem	0.00	45.75	49.85	37.45	48.25	41.00	44.75	55.30	0.00	0.00	0.00	0.00	0.00	0.00	322.35	323.00	(0.65)
Seward High	0.00	0.00	0.00	0.00	0.00	0.00	0.00	0.00	0.00	0.00	69.85	59.00	77.80	56.40	263.05	274.00	(10.95)
Seward Middle	0.00	0.00	0.00	0.00	0.00	0.00	0.00	0.00	64.05	54.75	0.00	0.00	0.00	0.00	118.80	116.00	2.80
Skyview	0.00	0.00	0.00	0.00	0.00	0.00	0.00	0.00	0.00	0.00	141.70	157.57	147.00	115.60	561.87	556.00	5.87
Soldotna Elem	0.00	49.25	32.00	34.00	40.75	40.25	53.75	42.15	0.00	0.00	0.00	0.00	0.00	0.00	292.15	292.00	0.15
Soldotna High	0.00	0.00	0.00	0.00	0.00	0.00	0.00	0.00	0.00	0.00	156.30	142.60	110.30	109.10	518.30	516.00	2.30
Soldotna Middle	0.00	0.00	0.00	0.00	0.00	0.00	0.00	2.00	269.85	267.77	0.80	0.00	0.00	0.00	540.42	536.00	4.42
Spring Creek	0.00	0.00	0.00	0.00	0.00	0.00	0.00	0.00	0.00	0.00	16.00	15.00	12.00	12.00	55.00	37.00	18.00
Sterling	0.00	22.32	26.00	13.00	30.60	28.10	36.80	49.00	0.00	0.00	0.00	0.00	0.00	0.00	205.82	203.00	2.82
Susan B English	0.00	9.00	3.00	3.00	1.95	2.00	1.00	9.00	7.00	4.00	10.00	7.45	3.00	12.00	72.40	73.00	(0.60)
Tebughna	0.00	3.00	2.80	6.00	2.80	4.00	4.00	5.00	6.00	1.00	4.00	0.00	1.00	0.00	39.60	40.00	(0.40)
Tustumena	0.00	17.50	19.50	30.10	32.25	31.00	27.00	45.45	0.00	0.00	0.00	0.00	0.00	0.00	202.80	205.00	(2.20)
Voznesenka	0.00	5.00	13.00	10.00	11.00	14.00	11.00	8.00	12.00	13.00	12.00	13.00	9.00	6.00	137.00	138.00	(1.00)
West Homer	0.00	0.00	0.00	0.00	64.25	67.25	67.10	88.00	0.00	0.00	0.00	0.00	0.00	0.00	286.60	285.00	1.60



FY04 ACTUAL ENROLLMENT

	Pre K	K	1	2	3	4	5	6	7	8	9	10	11	12	Total FY04	FY03	Difference
Aurora Borealis	0	23	21	23	23	23	21	13	13	11	0	0	0	0	171	156	15
Chapman	0	22	17	13	13	15	22	13	16	13	0	0	0	0	144	148	(4)
Connections	0	43	39	23	34	31	21	31	51	52	36	57	49	39	506	392	114
Cooper Landing	0	1	2	2	2	2	1	2	1	0	0	0	0	0	13	21	(8)
Fireweed Academy	0	0	0	0	5	8	10	7	0	0	0	0	0	0	30	31	(1)
Homer Flex	0	0	0	0	0	0	0	0	0	0	4	4	17	13	38	43	(5)
Homer High	0	0	0	0	0	0	0	0	0	0	143	126	101	91	461	485	(24)
Homer Middle	0	0	0	0	0	0	0	0	125	104	0	0	0	0	229	233	(4)
Hope	0	2	1	1	2	1	3	4	2	0	3	1	0	0	20	14	6
Kachemak Selo	3	7	10	9	6	10	5	7	8	7	3	5	1	2	83	79	4
K-Beach	0	56	67	58	54	57	73	75	0	0	0	0	0	0	440	441	(1)
Kenai Alternative	0	0	0	0	0	0	0	0	0	0	24	19	20	14	77	78	(1)
Kenai Central High	0	0	0	0	0	0	0	0	0	1	149	127	131	94	502	538	(36)
Kenai Middle	0	0	0	0	0	0	0	133	119	124	0	0	0	0	376	376	0
Kenai Youth Facility	0	0	0	0	0	0	0	0	1	1	2	2	2	2	10	0	10
McNeil Canyon	0	21	21	14	10	13	15	19	0	0	0	0	0	0	113	113	0
Montessori Charter	0	29	22	10	19	4	2	3	0	0	0	0	0	0	89	43	46
Moose Pass	0	4	3	3	6	4	5	2	4	2	0	0	0	0	33	43	(10)
Mountain View	0	0	0	0	110	118	109	0	0	0	0	0	0	0	337	346	(9)
Nanwalek	0	3	7	7	3	4	9	5	6	4	6	2	4	3	63	76	(13)
Nikiski Elem	0	19	34	13	24	33	29	27	0	0	0	0	0	0	179	198	(19)
Nikiski Middle/ Senior	0	0	0	0	0	0	0	0	80	85	82	70	84	75	476	487	(11)
Nikolaevsk	0	6	6	7	5	3	4	8	8	7	12	7	9	7	89	100	(11)
Ninilchik	2	10	2	5	9	13	12	20	15	30	15	17	15	16	181	186	(5)
North Star	0	19	24	26	41	39	46	29	0	0	0	0	0	0	224	274	(50)
Paul Banks	8	59	86	61	0	0	0	0	0	0	0	0	0	0	214	212	2
Port Graham	0	0	1	2	2	2	3	0	7	6	4	3	0	0	30	33	(3)
Razdolna	0	5	2	4	2	4	5	2	4	2	2	3	1	0	36	33	3
Redoubt	0	43	62	54	55	59	60	74	0	0	0	0	0	0	407	414	(7)
Sears	12	103	82	105	0	0	0	0	0	0	0	0	0	0	302	314	(12)
Seward Elem	4	42	51	38	48	41	44	55	0	0	0	0	0	0	323	356	(33)
Seward High	0	0	0	0	0	0	0	0	0	0	69	60	80	65	274	282	(8)
Seward Middle	0	0	0	0	0	0	0	0	63	53	0	0	0	0	116	121	(5)
Skyview	0	0	0	0	0	0	0	0	0	0	140	147	154	115	556	605	(49)
Soldotna Elem	17	31	33	34	41	40	55	41	0	0	0	0	0	0	292	307	(15)
Soldotna High	0	0	0	0	0	0	0	0	0	0	155	142	110	109	516	513	3
Soldotna Middle	0	0	0	0	0	0	0	2	271	263	0	0	0	0	536	538	(2)

Spring Creek	0	0	0	0	0	0	0	0	0	0	10	13	12	2	37	32	5
Sterling	0	22	24	14	30	28	37	48	0	0	0	0	0	0	203	221	(18)
Susan B English	1	8	3	3	2	2	1	9	7	4	10	8	3	12	73	75	(2)
Tebughna	0	3	3	6	3	4	4	5	6	1	4	0	1	0	40	43	(3)
Tustumena	0	18	20	30	32	31	27	47	0	0	0	0	0	0	205	231	(26)
Voznesenka	0	5	13	10	11	14	11	8	12	13	12	14	9	6	138	137	1
West Homer	0	0	0	0	64	67	66	88	0	0	0	0	0	0	285	293	(8)
	47	604	656	575	656	670	700	777	819	783	885	827	803	665	9467	9661	(194)



Enrollment History by Site

	91/92	92/93	93/94	94/95	95/96	96/97	97/98	98/99	99/00	00/01	01/02	02/03	03/04
Aurora Borealis Charter	-	-	-	-	-	-	76	91	87	102	131	156	171
Bayview Charter	-	-	-	-	-	-	18	17	-	-	-	-	-
Beluga	-	7	8	6	-	-	-	-	-	-	-	-	-
Chapman	214	215	231	250	258	244	250	233	191	165	151	148	144
Connections	102	70	66	114	104	98	112	92	221	462	370	392	506
Cooper Landing	41	47	49	40	40	37	36	35	38	35	32	21	13
Fireweed Academy	-	-	-	-	-	-	23	20	22	28	27	31	30
Homer Flex	21	16	26	26	14	15	30	33	31	48	40	43	38
Homer High	416	426	440	477	515	531	558	533	513	508	478	485	461
Homer Intermediate	240	255	279	262	256	249	-	-	-	-	-	-	-
Homer Middle	197	212	220	231	250	253	238	219	223	219	230	233	229
Hope	30	32	31	45	35	32	21	27	18	15	12	14	20
Kachemak Selo	59	57	65	56	54	57	65	65	67	67	64	79	83
K-Beach	442	462	467	476	436	460	426	426	451	446	458	441	440
Kenai Alternative	17	34	21	16	14	23	34	42	61	71	72	78	77
Kenai Central	425	414	431	452	457	482	490	508	496	483	518	538	502
Kenai Middle	374	365	388	406	454	455	442	435	414	426	424	376	376
McNeil Canyon	192	197	183	202	185	187	152	150	135	126	113	113	113
Montessori Charter	-	-	-	-	-	-	-	-	-	-	-	43	89
Moose Pass	36	31	34	35	39	39	38	36	42	40	46	43	33
Mountain View	509	496	449	458	417	434	407	413	386	391	355	346	337
Nanwalek	57	50	46	46	52	60	57	59	54	48	70	76	63
Nikiski Elem	296	301	311	307	315	302	277	241	211	222	191	198	179
Nikiski Middle/Senior	458	480	509	507	476	501	541	528	498	473	494	487	476
Nikolaevsk	162	149	162	167	141	137	147	146	127	113	119	100	89
Ninilchik	164	181	196	203	222	240	236	227	215	199	204	186	181
North Star	344	321	304	310	330	337	343	323	295	281	277	274	224
Paul Banks	390	326	332	334	307	347	249	227	239	229	199	212	214
Port Graham	35	37	39	36	35	40	38	43	38	29	34	33	30
Razdolna	37	32	36	40	38	28	36	42	25	35	34	33	36
Redoubt	404	403	405	422	432	433	436	417	411	410	423	414	407
Sears	411	429	440	420	434	403	399	383	383	378	350	314	302
Seward Elem	473	457	480	473	460	451	401	407	405	382	358	356	323
Seward High	205	230	250	261	276	285	276	294	290	295	284	282	274
Seward Middle	124	125	123	155	163	144	159	146	126	132	126	121	116
Skyview	452	503	568	572	570	633	618	628	588	594	624	605	556
Soldotna Elem	503	462	449	429	416	414	377	409	356	333	307	307	292
Soldotna High	456	441	431	500	547	581	592	571	554	538	511	513	516
Soldotna Middle	499	564	573	595	592	585	574	580	566	572	567	538	536
Spring Creek	-	-	-	-	-	-	-	-	-	31	47	32	37
Sterling	314	319	351	386	382	353	329	310	284	242	238	221	203
Susan B English	90	84	96	85	97	90	96	88	79	79	86	75	73

Tebughna	42	30	38	44	43	37	41	41	52	45	44	43	40
Tustumena	280	263	276	274	280	273	295	276	259	237	254	231	205
Voznesenka	68	75	103	108	134	126	113	108	130	138	136	137	138
West Homer Elem	-	-	-	-	-	-	338	310	315	296	301	293	285
Youth Detention Center	-	-	-	-	-	-	-	-	-	-	-	-	10
	9,579	9,598	9,906	10,226	10,270	10,396	10,384	10,179	9,896	9,963	9,799	9,661	9,467



Enrollment Projection by Site

School	Capacity (cap)	03/04		04/05	% cap	05/06	% cap	06/07	% cap	07/08	% cap	08/09	% cap	09/10	% cap
		actual	% cap												
Aurora Borealis Charter	*	171	N/A	188	N/A	197	N/A	197	N/A	197	N/A	197	N/A	198	N/A
Chapman	225	144	64%	146	65%	147	65%	152	68%	147	65%	149	66%	153	68%
Connections	**	506	N/A	500	N/A	513	N/A	526	N/A	539	N/A	552	N/A	565	N/A
Cooper Landing	50	13	26%	14	28%	16	32%	16	32%	17	34%	17	34%	17	34%
Fireweed Academy	*	30	N/A	34	N/A	38	N/A	43	N/A	38	N/A	34	N/A	30	N/A
Homer Flex	75	38	51%	50	67%	50	67%	50	67%	50	67%	50	67%	50	67%
Homer High	600	461	77%	449	75%	493	82%	512	85%	491	82%	479	80%	435	73%
Homer Middle	375	229	61%	235	63%	202	54%	178	47%	170	45%	161	43%	189	50%
Hope	100	20	20%	22	22%	24	24%	25	25%	24	24%	26	26%	26	26%
Kachemak Selo	100	83	83%	85	85%	91	91%	87	87%	88	88%	90	90%	86	86%
Kaleidoscope	*	-	N/A	88	N/A	114	N/A	132	N/A	132	N/A	132	N/A	132	N/A
K-Beach	500	440	88%	411	82%	392	78%	390	78%	390	78%	386	77%	373	75%
Kenai Alternative	125	77	62%	85	68%	82	66%	80	64%	80	64%	80	64%	80	64%
Kenai Central	800	502	63%	520	65%	509	64%	515	64%	476	60%	470	59%	461	58%
Kenai Middle	550	376	68%	354	64%	353	64%	331	60%	309	56%	260	47%	209	38%
Kenai Youth Facility	10	10	100%	10	100%	10	100%	10	100%	10	100%	10	100%	10	100%
McNeil Canyon	250	113	45%	111	44%	116	46%	122	49%	131	52%	136	54%	134	54%
Montessori Charter	*	89	N/A	111	N/A	89	N/A	60	N/A	65	N/A	47	N/A	48	N/A
Moose Pass	65	33	51%	35	54%	35	54%	37	57%	36	55%	36	55%	34	52%
Mountain View	500	337	67%	309	62%	260	52%	209	42%	234	47%	266	53%	313	63%
Nanwalek	50	63	126%	64	128%	65	130%	67	134%	65	130%	65	130%	63	126%
Nikiski Elem	500	179	36%	N/A	N/A	N/A	N/A	N/A	N/A	N/A	N/A	N/A	N/A	N/A	N/A
Nikiski Middle/Senior	600	476	79%	418	70%	419	70%	424	71%	416	69%	380	63%	359	60%
Nikiski North Star	500	224	45%	378	76%	348	70%	323	65%	301	60%	307	61%	294	59%
Nikolaevsk	250	89	36%	88	35%	84	34%	83	33%	77	31%	76	30%	74	30%
Ninilchik	400	181	45%	169	42%	161	40%	152	38%	144	36%	122	31%	114	29%
Paul Banks	350	214	61%	202	58%	183	52%	186	53%	188	54%	186	53%	187	53%
Port Graham	50	30	60%	29	58%	28	56%	23	46%	17	34%	18	36%	16	32%
Razdolna	50	36	72%	39	78%	43	86%	44	88%	46	92%	48	96%	48	96%
Redoubt	500	407	81%	377	75%	367	73%	356	71%	351	70%	346	69%	333	67%
Sears	500	302	60%	234	47%	266	53%	313	63%	307	61%	310	62%	309	62%
Seward Elem	500	323	65%	301	60%	303	61%	306	61%	303	61%	310	62%	304	61%
Seward High	400	274	69%	244	61%	240	60%	245	61%	229	57%	207	52%	197	49%
Seward Middle	300	116	39%	118	39%	103	34%	89	30%	94	31%	93	31%	97	32%
Skyview	600	556	93%	544	91%	557	93%	568	95%	569	95%	548	91%	520	87%
Soldotna Elem	550	292	53%	279	51%	264	48%	265	48%	268	49%	276	50%	285	52%
Soldotna High	800	516	65%	535	67%	570	71%	584	73%	569	71%	548	69%	520	65%
Soldotna Middle	550	536	97%	546	99%	527	96%	457	83%	417	76%	393	71%	389	71%
Spring Creek	55	37	67%	55	100%	55	100%	55	100%	55	100%	55	100%	55	100%
Sterling	325	203	62%	176	54%	164	50%	160	49%	155	48%	165	51%	165	51%
Susan B English	200	73	37%	66	33%	69	35%	68	34%	64	32%	66	33%	65	33%
Tebughna	125	40	32%	46	37%	51	41%	56	45%	58	46%	62	50%	61	49%
Tustumena	400	205	51%	175	44%	169	42%	159	40%	148	37%	139	35%	139	35%

Voznesenka	150	138	92%	136	91%	134	89%	125	83%	118	79%	111	74%	104	69%
West Homer Elem	500	285	57%	254	51%	273	55%	265	53%	262	52%	267	53%	244	49%
		9,467		9,230		9,174		9,045		8,845		8,676		8,485	

* Charter Schools are housed in the district according to the terms of their contract, which is based on available space in existing facilities.

** Connections Program does not require space to house students.



Enrollment Projection by Area

School	Capacity	03/04		04/05		05/06		06/07		07/08		08/09		09/10	
	(cap)		% cap		% cap		% cap		% cap		% cap		% cap		% cap
Homer Area															
Chapman	225	144	64%	146	65%	147	65%	152	68%	147	65%	149	66%	153	68%
Fireweed Academy	*	30	N/A	34	N/A	38	N/A	43	N/A	38	N/A	34	N/A	30	N/A
Homer Flex	75	38	51%	50	67%	50	67%	50	67%	50	67%	50	67%	50	67%
Homer High	600	461	77%	449	75%	493	82%	512	85%	491	82%	479	80%	435	73%
Homer Middle	375	229	61%	235	63%	202	54%	178	47%	170	45%	161	43%	189	50%
Kachemak Selo	100	83	83%	85	85%	91	91%	87	87%	88	88%	90	90%	86	86%
McNeil Canyon	250	113	45%	111	44%	116	46%	122	49%	131	52%	136	54%	134	54%
Nikolaevsk	250	89	36%	88	35%	84	34%	83	33%	77	31%	76	30%	74	30%
Ninilchik	400	181	45%	169	42%	161	40%	152	38%	144	36%	122	31%	114	29%
Paul Banks	350	214	61%	202	58%	183	52%	186	53%	188	54%	186	53%	187	53%
Razdolna	50	36	72%	39	78%	43	86%	44	88%	46	92%	48	96%	48	96%
Voznesenka	150	138	92%	136	91%	134	89%	125	83%	118	79%	111	74%	104	69%
West Homer Elem	500	285	57%	254	51%	273	55%	265	53%	262	52%	267	53%	244	49%
Kenai Area															
Aurora Borealis Charter	*	171	N/A	188	N/A	197	N/A	197	N/A	197	N/A	197	N/A	198	N/A
Kaleidoscope Charter	*	-	N/A	88	N/A	114	N/A	132	N/A	132	N/A	132	N/A	132	N/A
Kenai Alternative	125	77	62%	85	68%	82	66%	80	64%	80	64%	80	64%	80	64%
Kenai Central	800	502	63%	520	65%	509	64%	515	64%	476	60%	470	59%	461	58%
Kenai Middle	550	376	68%	354	64%	353	64%	331	60%	309	56%	260	47%	209	38%
Mountain View	500	337	67%	309	62%	260	52%	209	42%	234	47%	266	53%	313	63%
Sears	500	302	60%	234	47%	266	53%	313	63%	307	61%	310	62%	309	62%
Nikiski Area															
Nikiski Elem	500	179	36%	N/A	N/A	N/A	N/A	N/A	N/A	N/A	N/A	N/A	N/A	N/A	N/A
Nikiski Middle/Senior	600	476	79%	418	70%	419	70%	424	71%	416	69%	380	63%	359	60%
North Star	500	224	45%	378	76%	348	70%	323	65%	301	60%	307	61%	294	59%
Seward Area															
Moose Pass	65	33	51%	35	54%	35	54%	37	57%	36	55%	36	55%	34	52%
Seward Elem	500	323	65%	301	60%	303	61%	306	61%	303	61%	310	62%	304	61%
Seward High	400	274	69%	244	61%	240	60%	245	61%	229	57%	207	52%	197	49%
Seward Middle	300	116	39%	118	39%	103	34%	89	30%	94	31%	93	31%	97	32%
Spring Creek	55	37	67%	55	100%	55	100%	55	100%	55	100%	55	100%	55	100%
Soldotna Area															
Cooper Landing	50	13	26%	14	28%	16	32%	16	32%	17	34%	17	34%	17	34%
K-Beach	500	440	88%	411	82%	392	78%	390	78%	390	78%	386	77%	373	75%
Montessori Charter	*	89	N/A	111	N/A	89	N/A	60	N/A	65	N/A	47	N/A	48	N/A
Redoubt	500	407	81%	377	75%	367	73%	356	71%	351	70%	346	69%	333	67%
Skyview	600	556	93%	544	91%	557	93%	568	95%	569	95%	548	91%	520	87%
Soldotna Elem	550	292	53%	279	51%	264	48%	265	48%	268	49%	276	50%	285	52%
Soldotna High	800	516	65%	535	67%	570	71%	584	73%	569	71%	548	69%	520	65%
Soldotna Middle	550	536	97%	546	99%	527	96%	457	83%	417	76%	393	71%	389	71%
Sterling	325	203	62%	176	54%	164	50%	160	49%	155	48%	165	51%	165	51%
Tustumena	400	205	51%	175	44%	169	42%	159	40%	148	37%	139	35%	139	35%
Other Locations															
Connections	**	506	N/A	500	N/A	513	N/A	526	N/A	539	N/A	552	N/A	565	N/A
Hope	100	20	20%	22	22%	24	24%	25	25%	24	24%	26	26%	26	26%

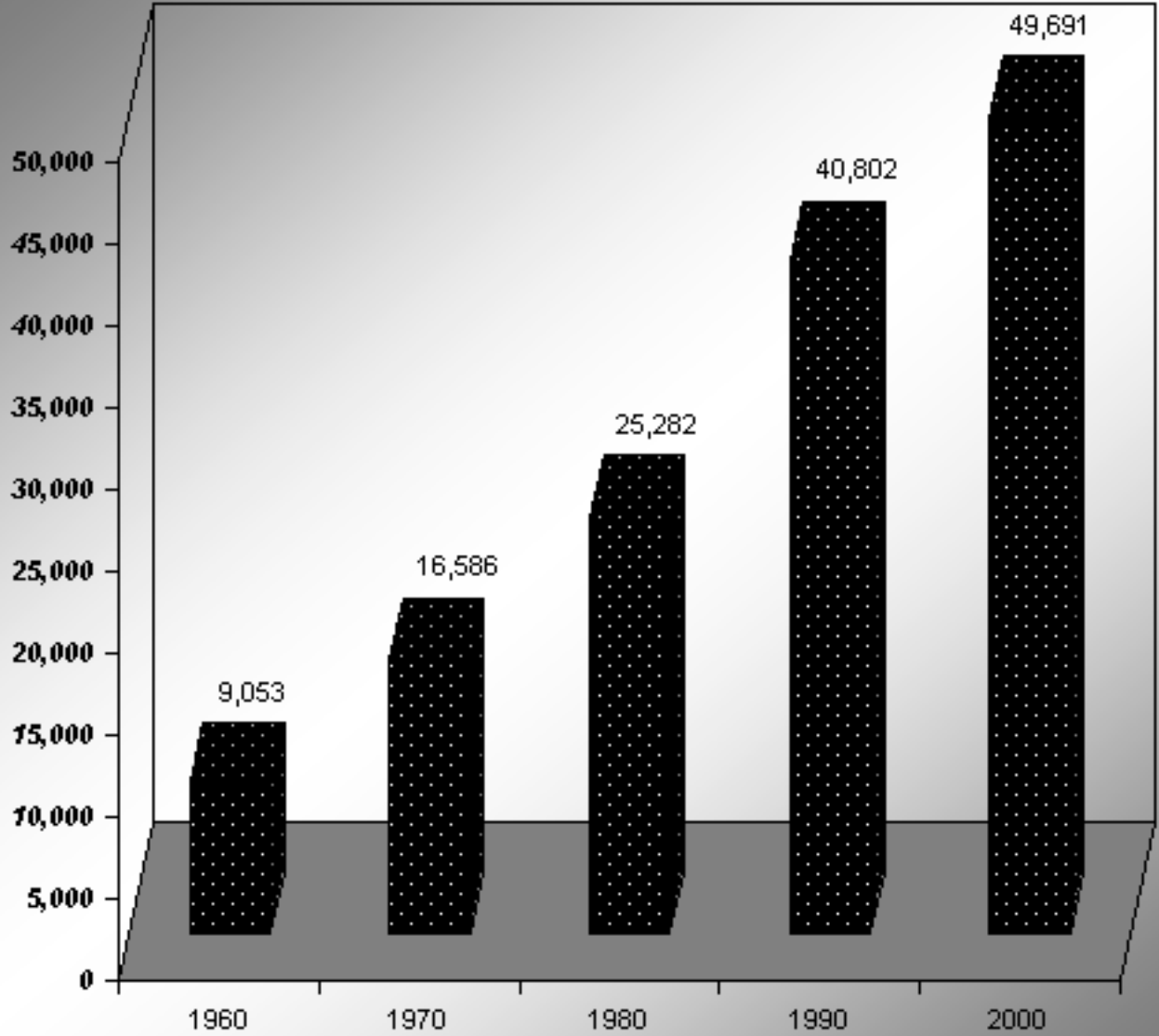
Kenai Youth Facility	10	10	100%	10	100%	10	100%	10	100%	10	100%	10	100%	10	100%
Nanwalek	50	63	126%	64	128%	65	130%	67	134%	65	130%	65	130%	63	126%
Port Graham	50	30	60%	29	58%	28	56%	23	46%	17	34%	18	36%	16	32%
Susan B English	200	73	37%	66	33%	69	35%	68	34%	64	32%	66	33%	65	33%
Tebughna	125	40	32%	46	37%	51	41%	56	45%	58	46%	62	50%	61	49%
		<u>9,467</u>		<u>9,230</u>		<u>9,174</u>		<u>9,045</u>		<u>8,845</u>		<u>8,676</u>		<u>8,485</u>	

* Charter Schools are housed in the district according to the terms of their contract, which is based on available space in existing facilities.

** Connections Program does not require space to house students.



Borough Population 1960 to 2000



Source: Alaska Department of Labor



There are several private schools within the borough. Enrollment figures are for the 2003-2004 school year.

School Name	Grades	# students
Academy of Higher Learning	K-12	27
Cook Inlet Academy	K-12	233
Grace Lutheran School	K-8	21
Homer Christian School	K-12	56
Kalifornsky Christian School	K-8	12
Lighthouse Christian School	Preschool only	13
Odyssey Academy	6-8	12
Otter Beach Academy	K-3	17
Reads Primary	K-2	27
Wings Academy	K-12	35
Total students in private schools		<u>453</u>

Some students in private schools are also enrolled in the Connections program, which means they are eligible to take classes at regular schools.



Population Growth and Projections for FY05 through FY10

Residential Births on the Kenai Peninsula:

Calendar Year	KPB Births	# Incr (Decr) over Prior Yr	Percent Incr (Decr)	Year of Expected Kindergarten Entry	Kindergarten Enrollment
2002 *	641	8	1.26%	2007	615 (est)
2001 *	633	37	6.21%	2006	610 (est)
2000	596	-70	-10.51%	2005	597 (est)
1999	666	13	1.99%	2004	604
1998	653	2	0.31%	2003	604
1997	651	-33	-4.82%	2002	582
1996	684	16	2.40%	2001	638
1995	668			2000	604

* From State of Alaska Department of Public Health, Vital Statistics Method of Delivery Report

Historical Data

Although borough population shows a 25% increase over the last twelve years, KPBSD enrollment has only increased a total of about 12 %. It has been declining since a high of 10,396 in 1997. In 1995, enrollment was over 22% of the total population, but that percentage has declined to just over 19% of the total population for 2002.

Comparison of KPBSD Enrollment to total borough population:

Year	KPBSD Enrollment	KPB Total Population	% of Total
2002	9,799	51,187	19.14%
2001	9,963	50,185	19.85%
2000	9,896	49,691	19.92%
1999	10,179	49,236	20.67%
1998	10,384	48,813	21.27%
1997	10,396	47,974	21.67%
1996	10,270	46,930	21.88%
1995	10,226	46,184	22.14%
1994	9,906	45,338	21.85%
1993	9,598	44,100	21.76%
1992	9,579	43,752	21.89%
1991	9,318	42,431	21.96%
1990	8,735	40,802	21.41%

