

School Report Card to the Public



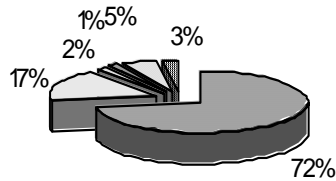
A Summary of Statistics from Kenai Peninsula Borough School District's Public Schools.

School:	SEWARD ELEMENTARY	Grades:	K - 6
School Year:	2004/2005	School Enrollment:	310

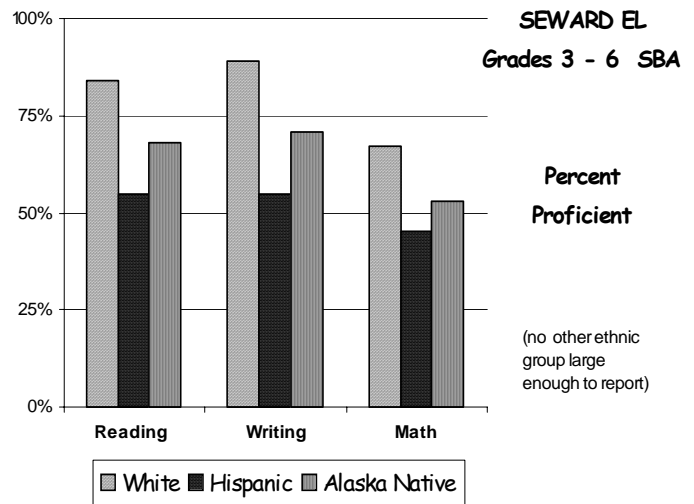
SEWARD ELEMENTARY

ETHNICITY

Enrolled Grades K - 6

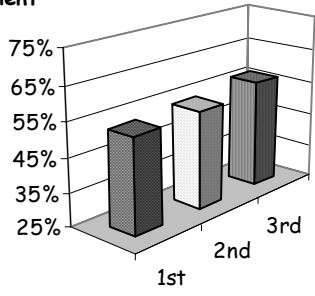


WHITE	ALASKA NATIVE
AM INDIAN	ASIAN/PACIFIC ISL
HISPANIC	AFRICAN AMERICAN

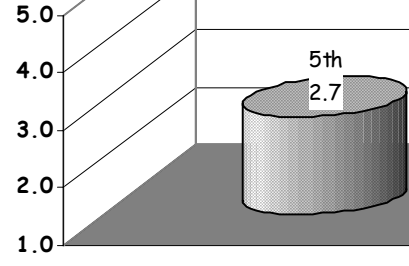


Attendance Rate	92%	Grades K - 8 Retention Rate:	0.3%
Graduation Rate:	N/A	High School Graduates	
Grades 7 -12 Dropout Rate	N/A	Grades 7 -12 Dropouts	
Enrollment Change	-4 %	Enrollment Change Due to Transfers	28%
Student Survey Return Rate	0.3%	Parent Survey Return Rate	1.6%
Students Commenting	0	Parents Commenting	6
School/Business Partnerships	43	Community Members Commenting	2
Average Volunteer Hours Per Week	55		

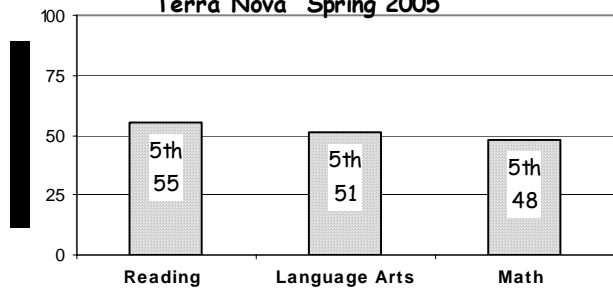
READING CBM
percent proficient



AWA Composite Scores

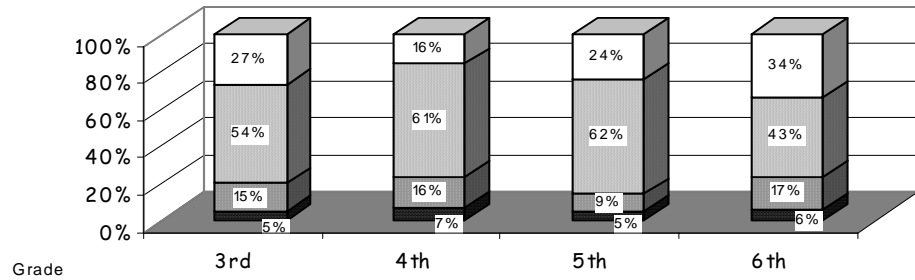


Terra Nova Spring 2005

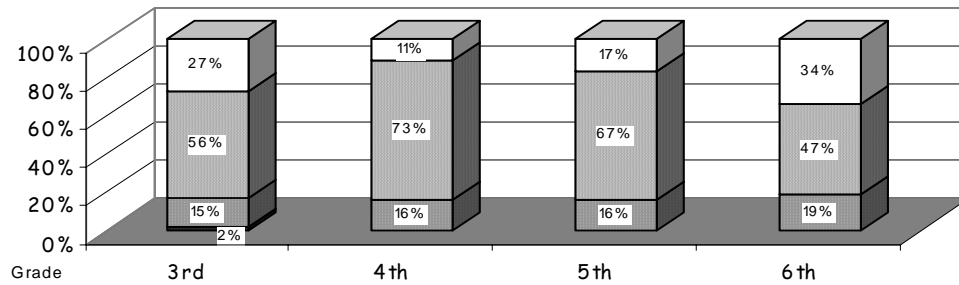


SBA READING

- Advanced
- ▒ Proficient
- ▓ Below Proficient
- Far Below Proficient



SBA WRITING



SBA MATH

