

School Report Card to the Public



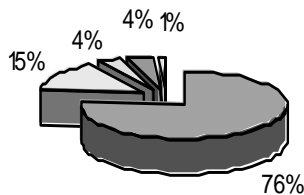
A Summary of Statistics from Kenai Peninsula Borough School District's Public Schools.

School:	SEWARD HIGH	Grades:	9 - 12
Accreditation:	Yes	School Enrollment:	244
School Year:	2004/2005		

SEWARD HIGH

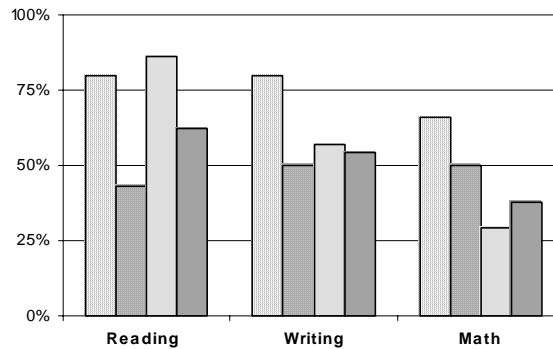
ETHNICITY

Enrolled Grades 9 - 12



WHITE	ALASKA NATIVE
AM INDIAN	ASIAN/PACIFIC ISL
HISPANIC	

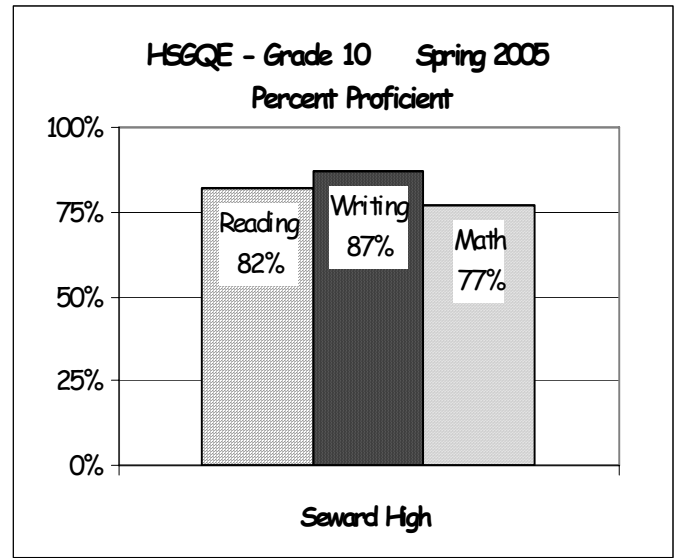
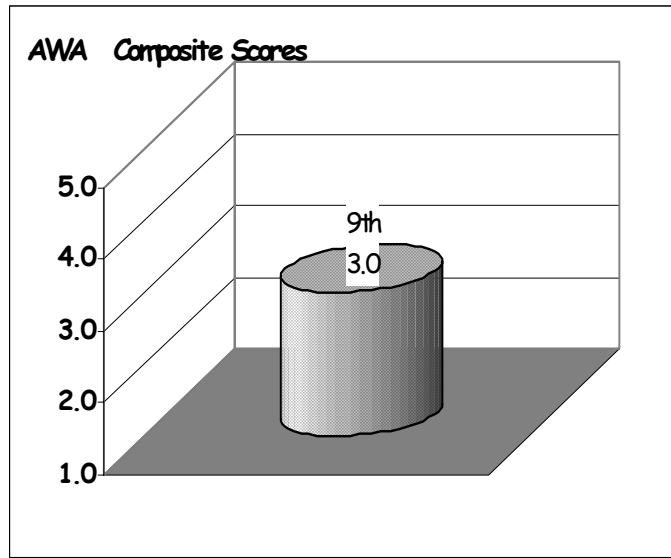
SEWARD HIGH
Grade 9 SBA
& Grade 10 HSGQE



Percent Proficient

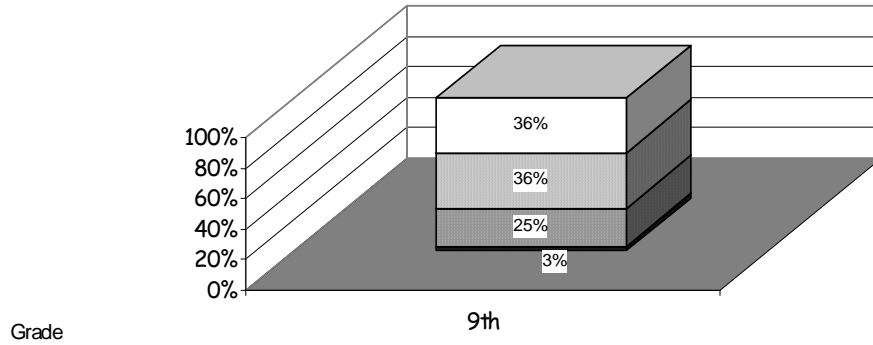
White	Asian/Pacific Islander	American Indian	Alaska Native
-------	------------------------	-----------------	---------------

Attendance Rate	98%	Grades K - 8 Retention Rate:	N/A
Graduation Rate:	82%	High School Graduates	56
Grades 7 -12 Dropout Rate	1.9%	Grades 7 -12 Dropouts	5
Enrollment Change	-5.8%	Enrollment Change Due to Transfers	24.3%
Student Survey Return Rate	25 %	Parent Survey Return Rate	4 %
Students Commenting	10	Parents Commenting	4
School/Business Partnerships	35	Community Members Commenting	3
Average Volunteer Hours Per Week	26		

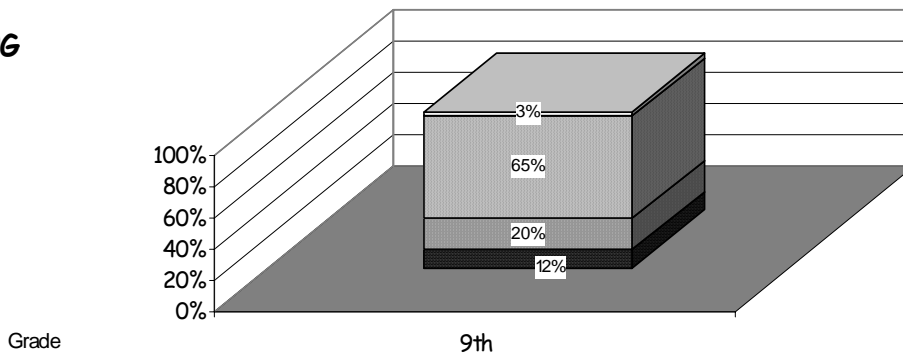


SBA READING

- Advanced
- Proficient
- Below Proficient
- Far Below Proficient



SBA WRITING



SBA MATH

