

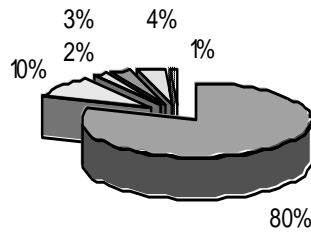
School Report Card to the Public



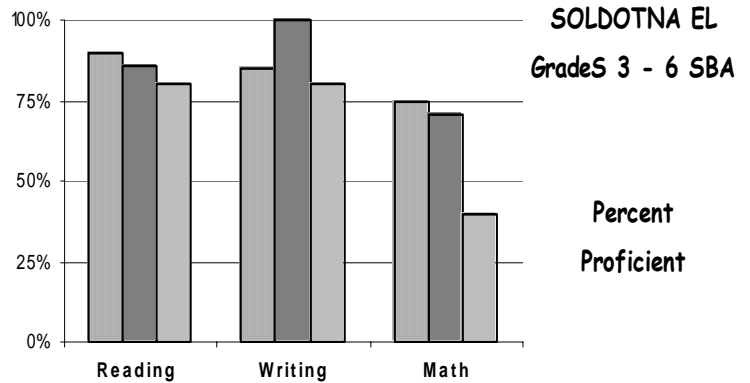
A Summary of Statistics from Kenai Peninsula Borough School District's Public Schools.

School:	SOLDOTNA ELEMENTARY	Grades:	K - 6
School Year:	2004/2005	School Enrollment:	287

**SOLDOTNA ELEMENTARY
ETHNICITY
Enrolled Grades K - 6**



WHITE	ALASKA NATIVE
AM INDIAN	ASIAN/PACIFIC ISL
HISPANIC	AFRICAN AMERICAN

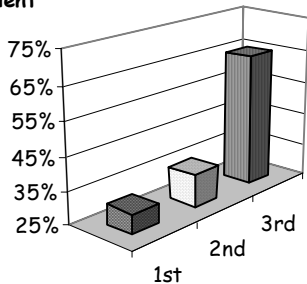


White	Hispanic	Alaska Native
-------	----------	---------------

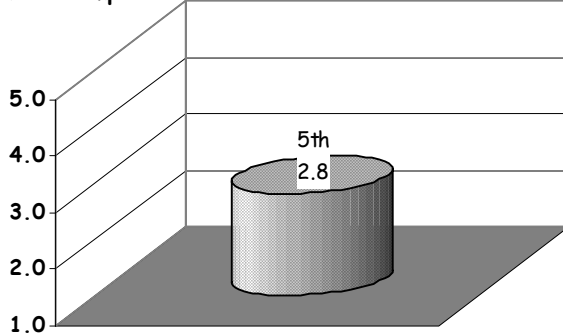
Attendance Rate	94%	Grades K - 8 Retention Rate:	0.3%
Graduation Rate:	N/A	High School Graduates	
Grades 7 -12 Dropout Rate	N/A	Grades 7 -12 Dropouts	
Enrollment Change	0.0	Enrollment Change Due to Transfers	
Student Survey Return Rate	44 %	Parent Survey Return Rate	12 %
Students Commenting	123	Parents Commenting	53
School/Business Partnerships	3	Community Members Commenting	3
Average Volunteer Hours Per Week	115		

READING CBM

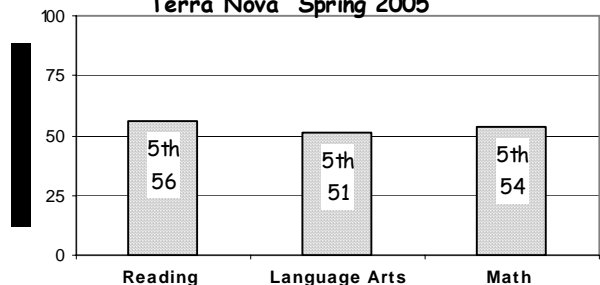
percent proficient



AWA Composite Scores

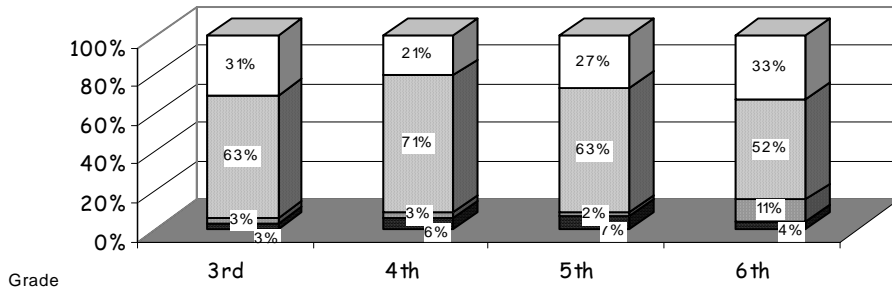


Terra Nova Spring 2005

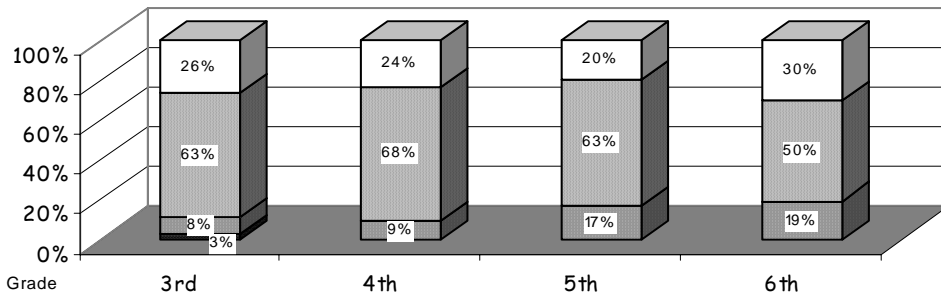


SBA READING

- Advanced
- ▒ Proficient
- ▓ Below Proficient
- Far Below Proficient



SBA WRITING



SBA MATH

