

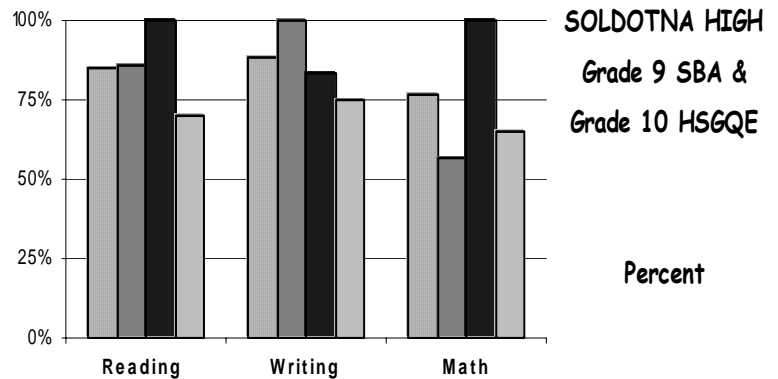
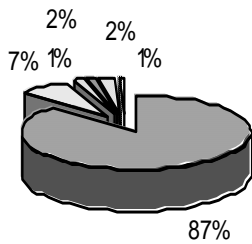
School Report Card to the Public



A Summary of Statistics from Kenai Peninsula Borough School District's Public Schools.

School:	SOLDOTNA HIGH	Grades:	9 - 12
Accreditation:	Yes	School Enrollment:	495
School Year:	2004/2005		

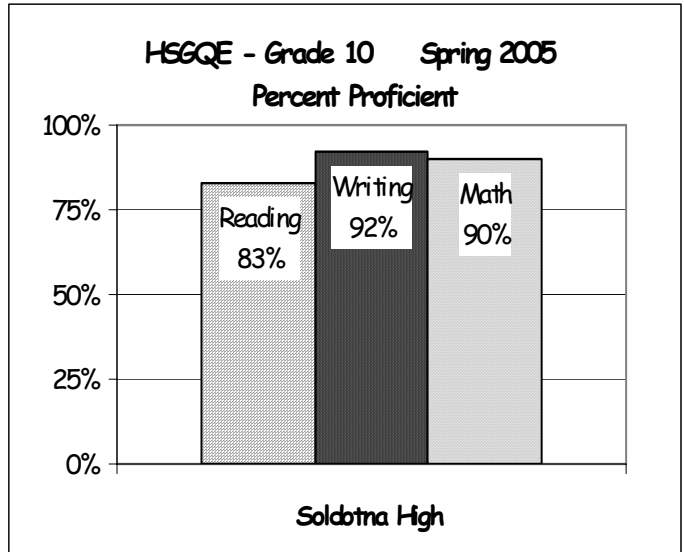
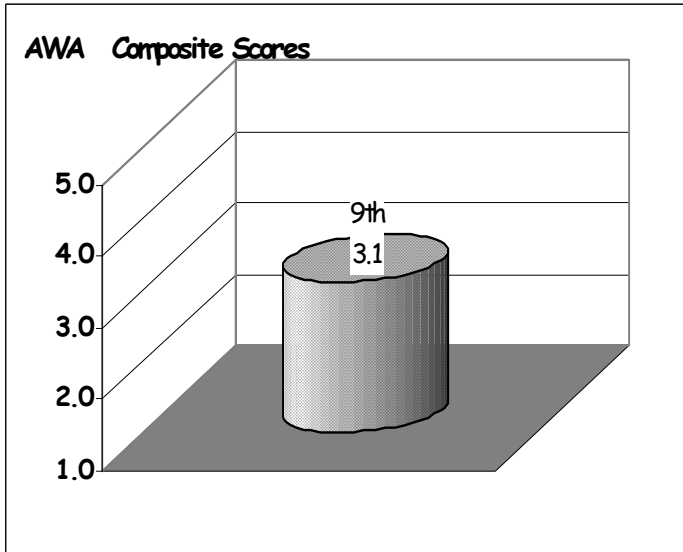
**SOLDOTNA HIGH
ETHNICITY
Enrolled Grades 9 - 12**



WHITE	ALASKA NATIVE
AM INDIAN	ASIAN/PACIFIC ISL
HISPANIC	AFRICAN AMERICAN

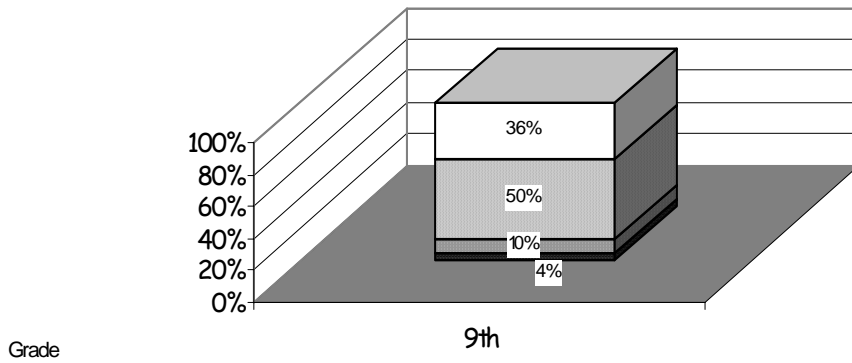
White	Hispanic	American Indian	Alaska Native
-------	----------	-----------------	---------------

Attendance Rate	95%	Grades K - 8 Retention Rate:	1.1
Graduation Rate:	77%	High School Graduates	90
Grades 7 -12 Dropout Rate	1.8%	Grades 7 -12 Dropouts	10
Enrollment Change	2.9%	Enrollment Change Due to Transfers	18.6%
Student Survey Return Rate	44 %	Parent Survey Return Rate	5.7 %
Students Commenting	302	Parents Commenting	42
School/Business Partnerships	47	Community Members Commenting	8
Average Volunteer Hours Per Week	12		

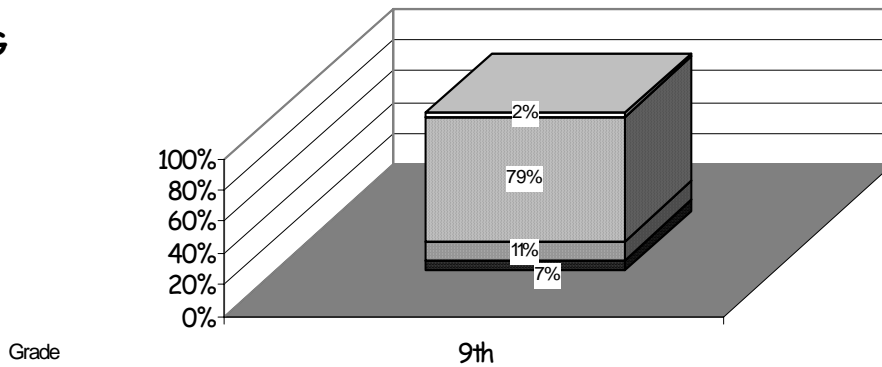


SBA READING

- Advanced
- Proficient
- Below Proficient
- Far Below Proficient



SBA WRITING



SBA MATH

