

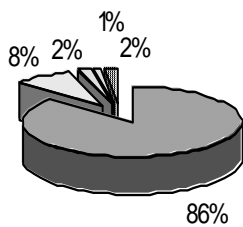
School Report Card to the Public



A Summary of Statistics from Kenai Peninsula Borough School District's Public Schools.

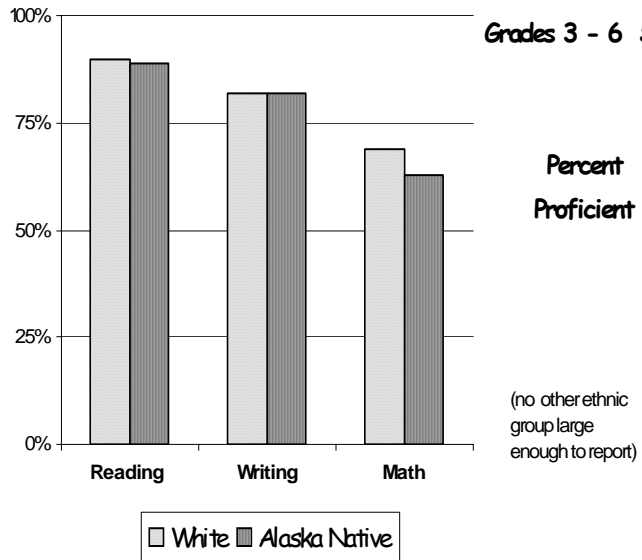
School:	STERLING ELEMENTARY	Grades:	K - 6
School Year:	2004/2005	School Enrollment:	200

**STERLING
ETHNICITY
Enrolled Grades K - 6**



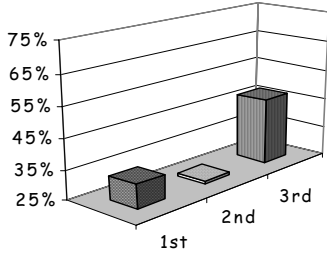
WHITE	ALASKA NATIVE	AM INDIAN
HISPANIC	AFRICAN AMERICAN	

**STERLING
Grades 3 - 6 SBA**

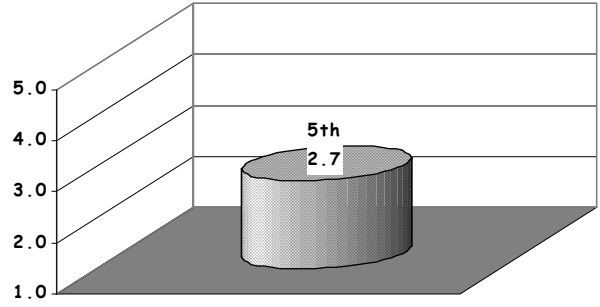


Attendance Rate	94%	Grades K - 8 Retention Rate:	1.5%
Graduation Rate:	N/A	High School Graduates	
Grades 7 -12 Dropout Rate	N/A	Grades 7 -12 Dropouts	
Enrollment Change	-2.4%	Enrollment Change Due to Transfers	36%
Student Survey Return Rate	17.5%	Parent Survey Return Rate	15.2%
Students Commenting	36	Parents Commenting	47
School/Business Partnerships	13	Community Members Commenting	8
Average Volunteer Hours Per Week	80		

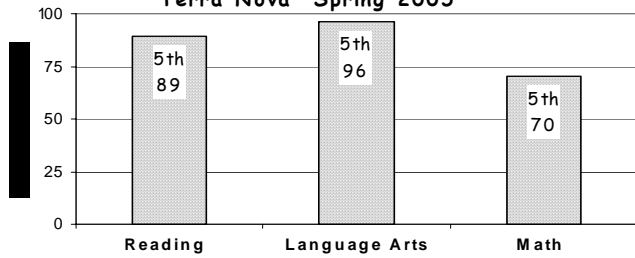
READING CBM
percent proficient



AWA Composite Scores

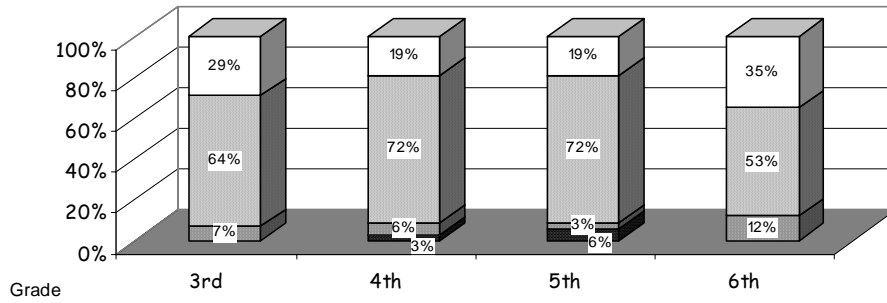


Terra Nova Spring 2005

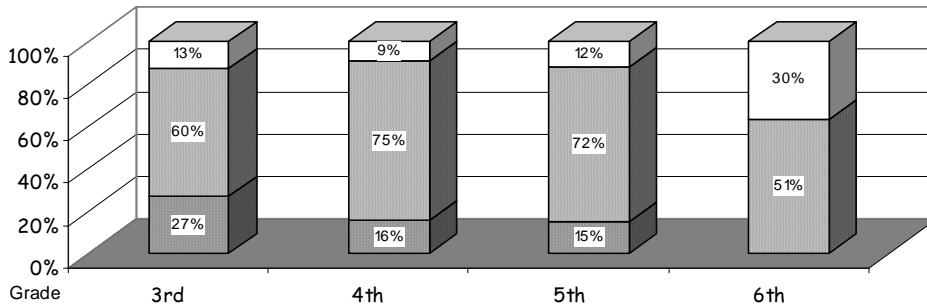


SBA READING

- Advanced
- ▒ Proficient
- Below Proficient
- Far Below Proficient



SBA WRITING



SBA MATH

