

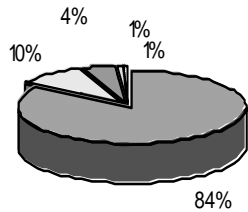
School Report Card to the Public



A Summary of Statistics from Kenai Peninsula Borough School District's Public Schools.

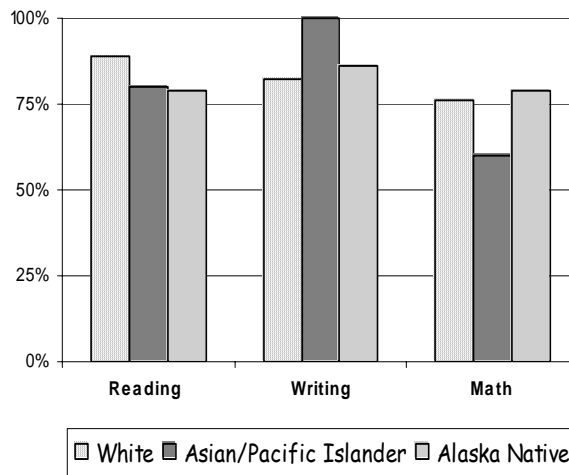
School:	TUSTUMENA	Grades:	K - 6
School Year:	2004/2005	School Enrollment:	167

**TUSTUMENA
ETHNICITY
Enrolled Grades K - 6**



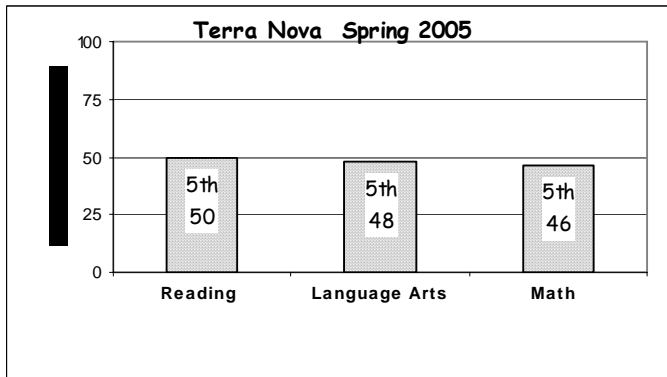
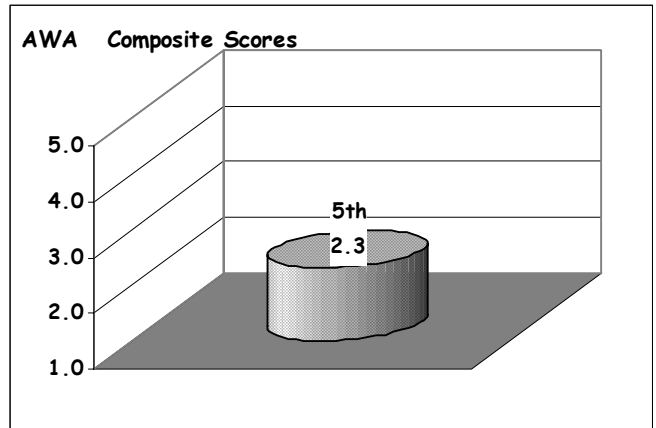
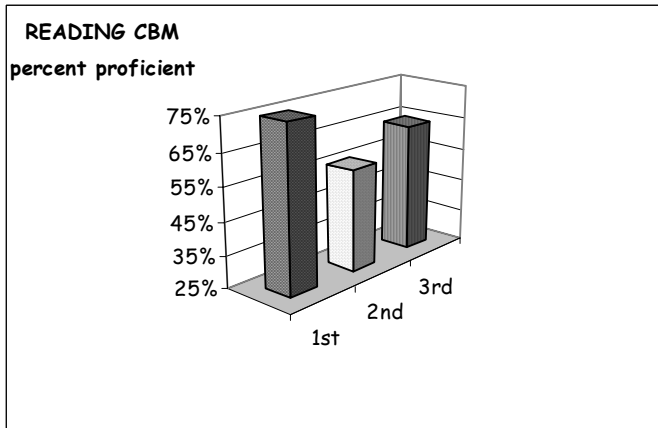
WHITE	ALASKA NATIVE
ASIAN/PACIFIC ISL	HISPANIC
AFRICAN AMERICAN	

**TUSTUMENA
Grades 3 - 6 SBA**

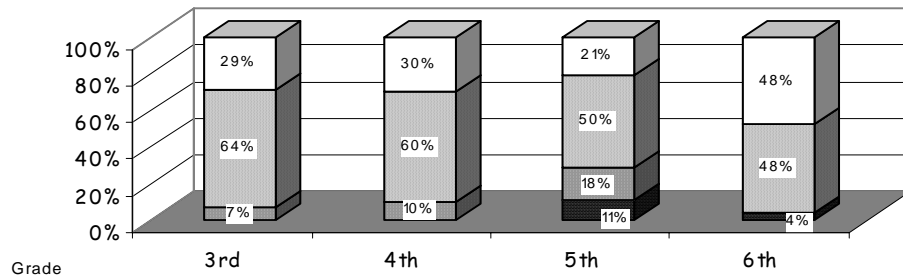
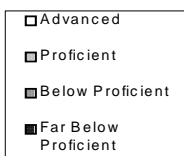


Percent Proficient

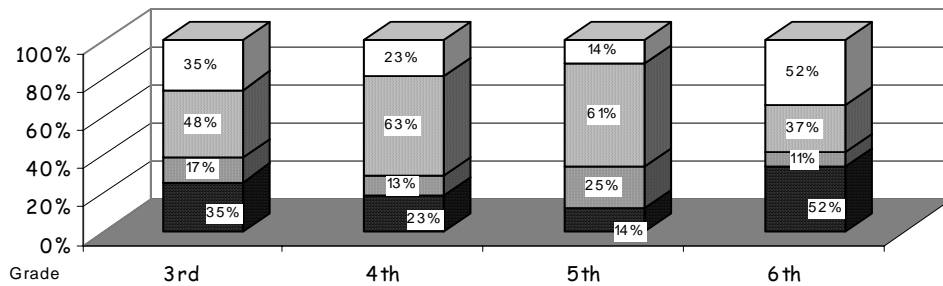
Attendance Rate	92%	Grades K - 8 Retention Rate:	1.8%
Graduation Rate:	N/A	High School Graduates	
Grades 7 -12 Dropout Rate	N/A	Grades 7 -12 Dropouts	
Enrollment Change	19%	Enrollment Change Due to Transfers	30%
Student Survey Return Rate	3.6%	Parent Survey Return Rate	2.6%
Students Commenting	1	Parents Commenting	3
School/Business Partnerships	3	Community Members Commenting	2
Average Volunteer Hours Per Week	30		



SBA READING



SBA WRITING



SBA MATH

