

# School Report Card to the Public

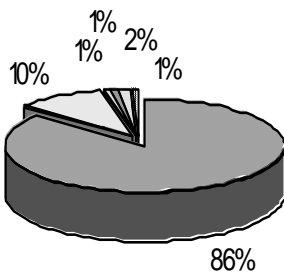


A Summary of Statistics from Kenai Peninsula Borough School District's Public Schools.

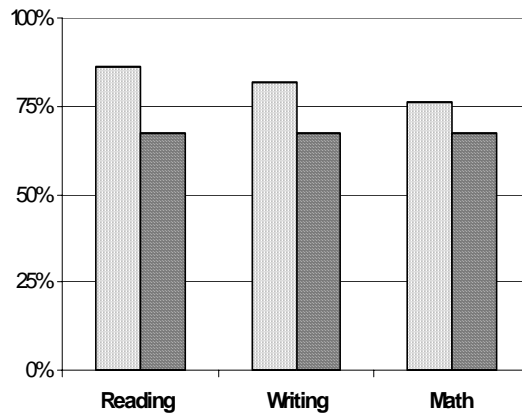
School:	Chapman	Grades:	K - 8
School Year:	2004/2005	School Enrollment:	125

## CHAPMAN ETHNICITY

Enrolled Grades K - 8



## CHAPMAN Grades 3 - 8 SBA



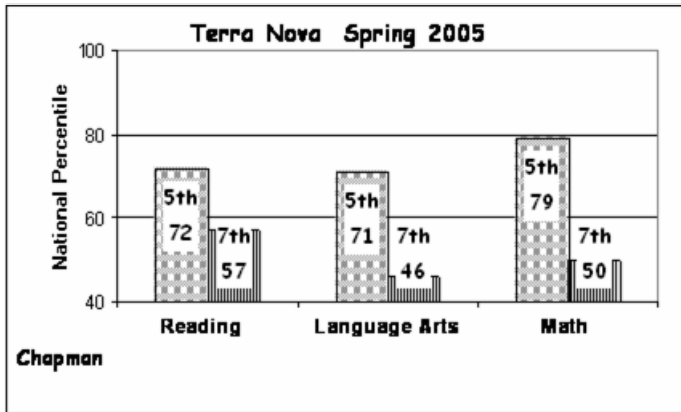
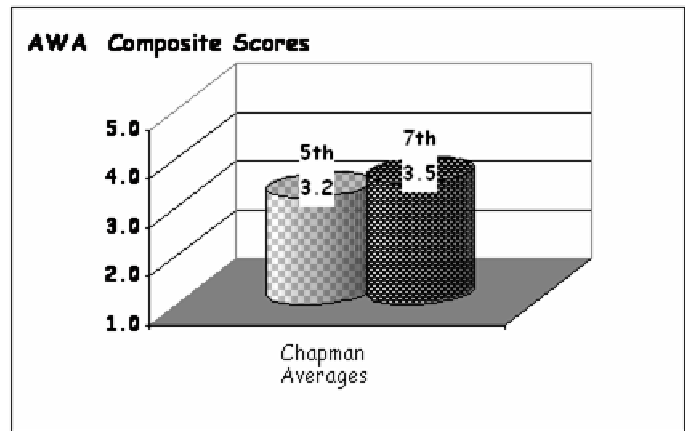
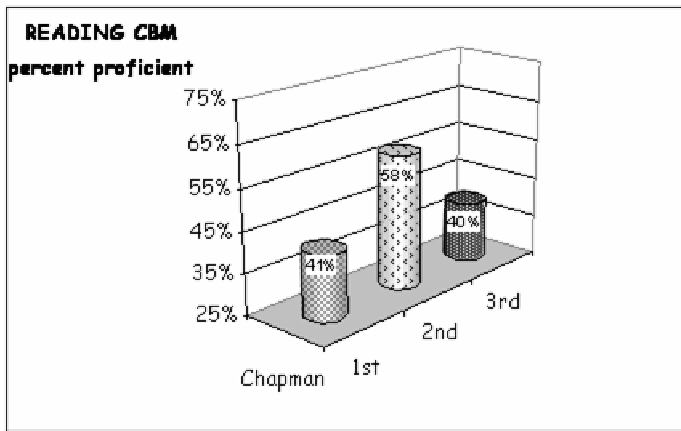
Percent Proficient

(no other ethnic group large enough to report)

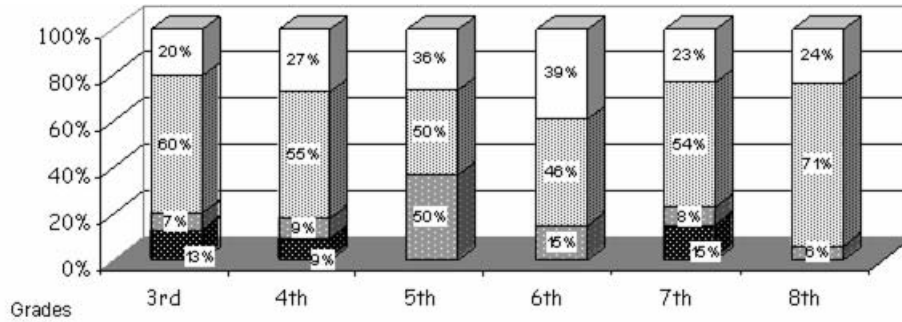
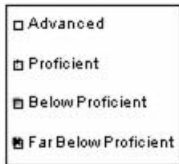
WHITE	ALASKA NATIVE	AM INDIAN
ASIAN/PACIFIC ISL	HISPANIC	

White	Alaska Native
-------	---------------

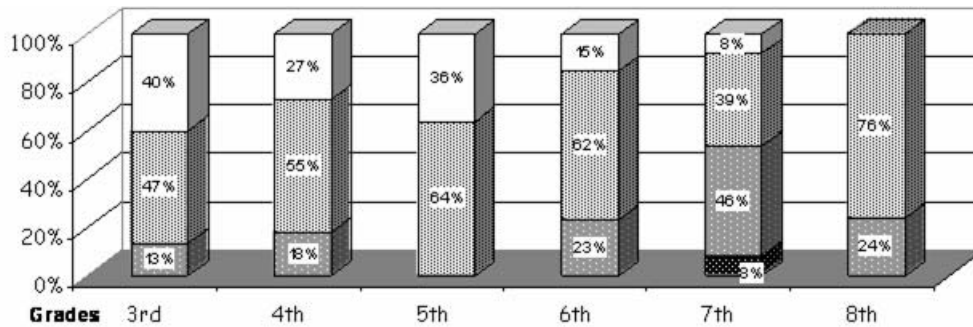
Attendance Rate	93%	Grades K - 8 Retention Rate:	0.0%
Graduation Rate:	N/A	High School Graduates	
Grades 7 -12 Dropout Rate	0.0%	Grades 7 -12 Dropouts	
Enrollment Change	-7.7%	Enrollment Change Due to Transfers	27.7%
Student Survey Return Rate	0.0%	Parent Survey Return Rate	1.6%
Students Commenting	0	Parents Commenting	0
School/Business Partnerships	0	Community Members Commenting	0
Average Volunteer Hours Per Week	25		



### SBA READING



### SBA WRITING



### SBA MATH

