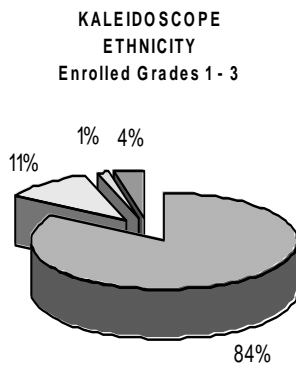


School Report Card to the Public

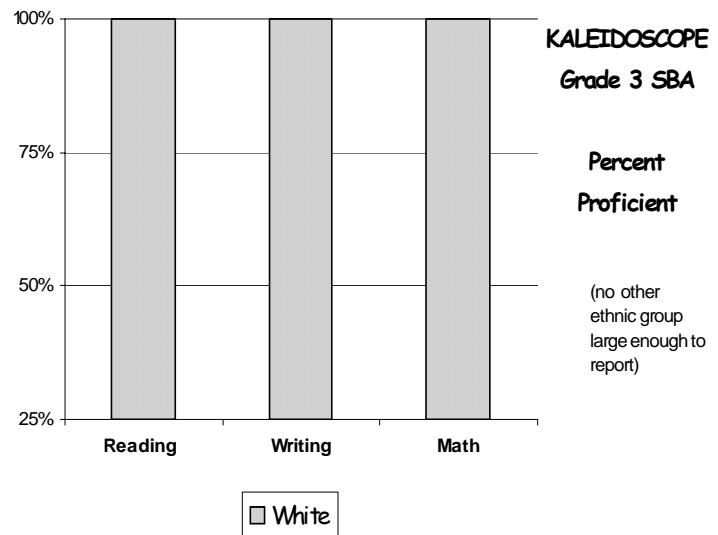


A Summary of Statistics from Kenai Peninsula Borough School District's Public Schools.

| | | | |
|--------------|--------------|--------------------|-------|
| School: | KALEIDOSCOPE | Grades: | 1 - 3 |
| School Year: | 2004/2005 | School Enrollment: | 82 |
| | | | |

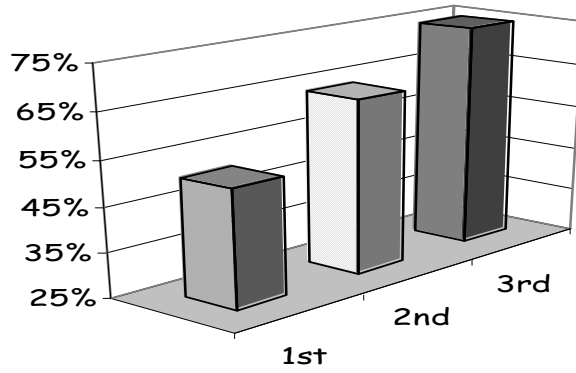


- WHITE
- ALASKA NATIVE
- AM INDIAN
- ASIANPACIFIC ISL



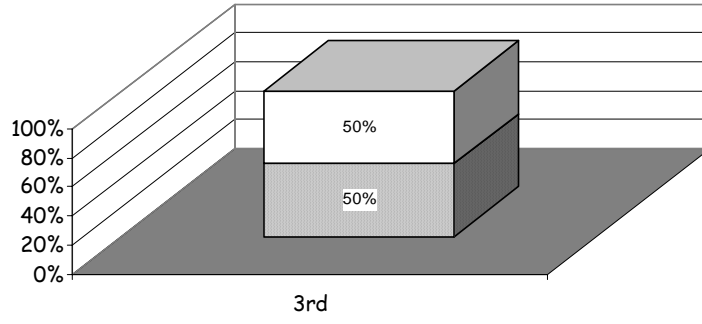
| | | | |
|----------------------------------|-----|------------------------------------|------|
| Attendance Rate | 94% | Grades K - 8 Retention Rate: | 0.0% |
| Graduation Rate: | N/A | High School Graduates | |
| Grades 7 -12 Dropout Rate | N/A | Grades 7 -12 Dropouts | |
| Enrollment Change | N/A | Enrollment Change Due to Transfers | |
| Student Survey Return Rate | 80% | Parent Survey Return Rate | 86% |
| Students Commenting | 70 | Parents Commenting | 38 |
| School/Business Partnerships | 0 | Community Members Commenting | 0 |
| Average Volunteer Hours Per Week | 25 | | |

READING CBM
percent proficient

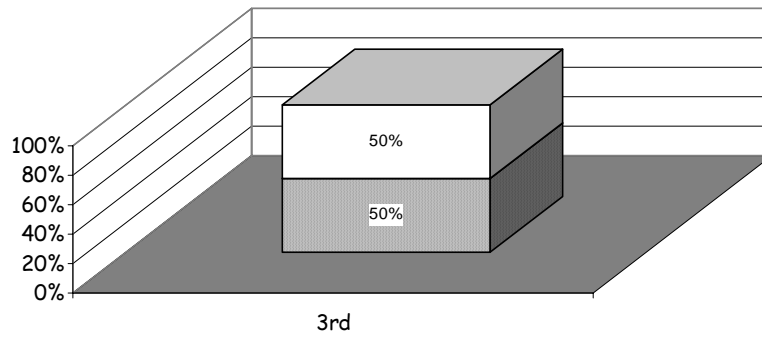


SBA READING

- Advanced
- ▒ Proficient
- Below Proficient
- Far Below Proficient



SBA WRITING



SBA MATH

