

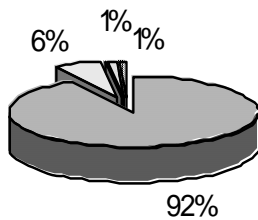
# School Report Card to the Public



A Summary of Statistics from Kenai Peninsula Borough School District's Public Schools.

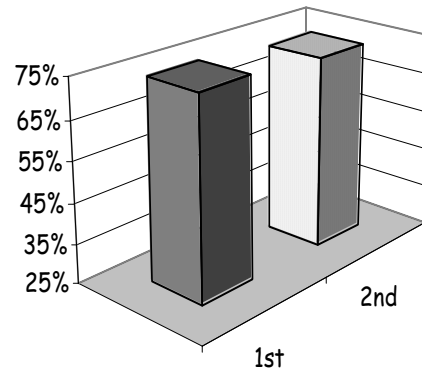
School:	PAUL BANKS	Grades:	K - 2
School Year:	2004/2005	School Enrollment:	230

**PAUL BANKS  
ETHNICITY  
Enrolled Grades K - 2**



WHITE	ALASKA NATIVE
HISPANIC	AFRICAN AMERICAN

**READING CBM  
percent proficient**



Attendance Rate	92%	Grades K - 8 Retention Rate:	2.8%
Graduation Rate:	N/A	High School Graduates	
Grades 7 -12 Dropout Rate	N/A	Grades 7 -12 Dropouts	
Enrollment Change	5.3%	Enrollment Change Due to Transfers	25%
Student Survey Return Rate	0.0%	Parent Survey Return Rate	0.0%
Students Commenting	0	Parents Commenting	30
School/Business Partnerships	2	Community Members Commenting	0
Average Volunteer Hours Per Week	135		