

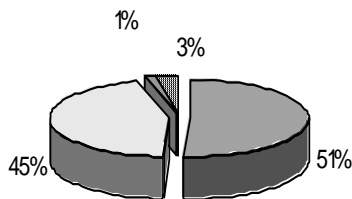
# School Report Card to the Public



A Summary of Statistics from Kenai Peninsula Borough School District's Public Schools.

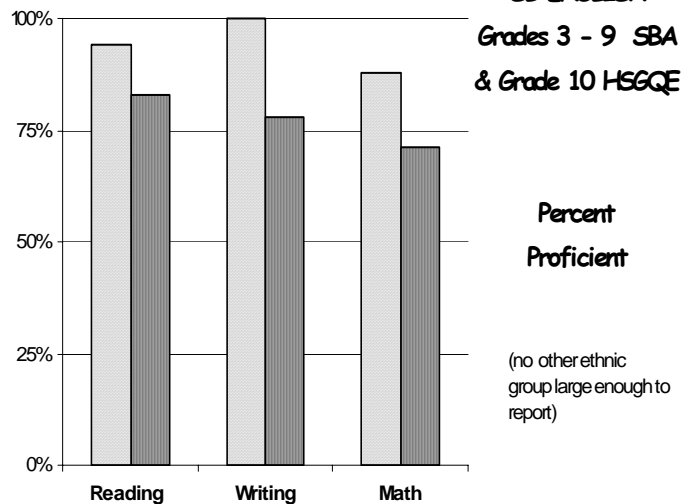
School:	SUSAN B ENGLISH	Grades:	K - 12
School Year:	2004/2005	School Enrollment:	62

**SB ENGLISH  
ETHNICITY  
Enrolled Grades K - 12**



White Alaska Native Asian/Pacific Isl African American

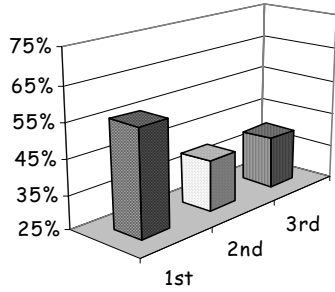
**SB ENGLISH  
Grades 3 - 9 SBA  
& Grade 10 HSGQE**



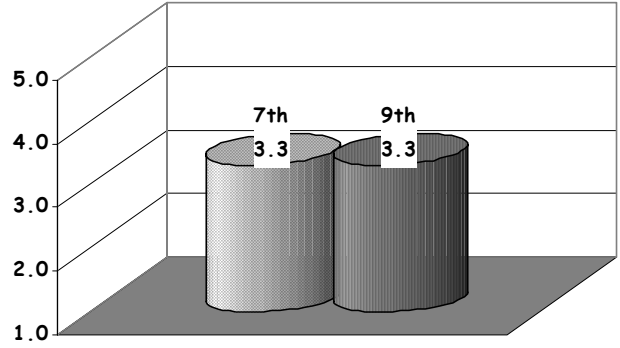
White Alaska Native

Attendance Rate	94%	Grades K - 8 Retention Rate:	0.0
Graduation Rate:	43%	High School Graduates	3
Grades 7 -12 Dropout Rate	0.0	Grades 7 -12 Dropouts	0
Enrollment Change	-11%	Enrollment Change Due to Transfers	22%
Student Survey Return Rate	0.0	Parent Survey Return Rate	0.0
Students Commenting	0	Parents Commenting	0
School/Business Partnerships	0	Community Members Commenting	0
Average Volunteer Hours Per Week	0		

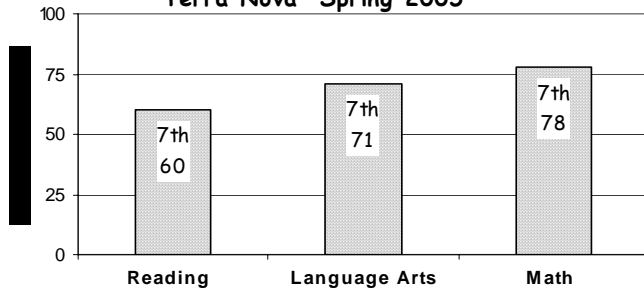
**READING CBM**  
percent proficient



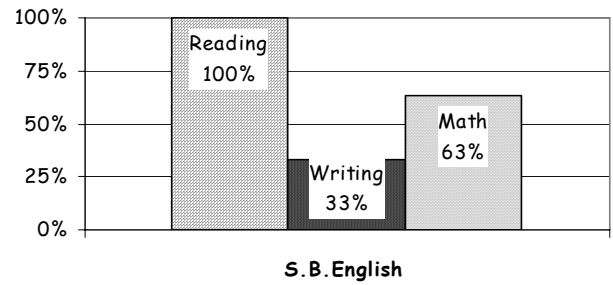
**AWA Composite Scores**



**Terra Nova Spring 2005**

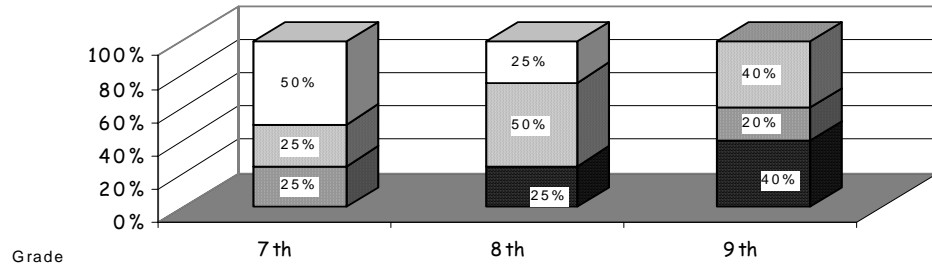


**HSGQE - Grade 10 Spring 2005**  
Percent Proficient

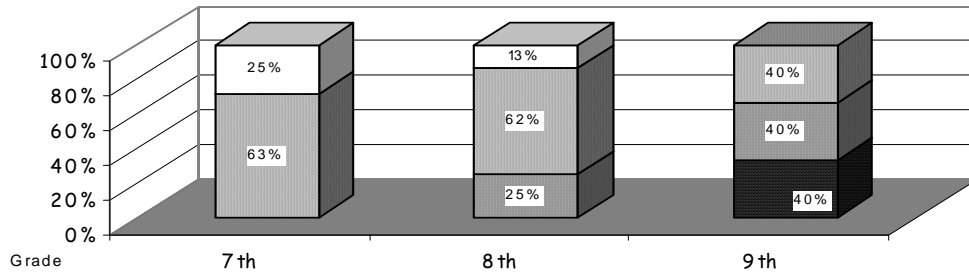


**SBA READING**

- Advanced
- ▒ Proficient
- ▓ Below Proficient
- Far Below Proficient



**SBA WRITING**



**SBA MATH**

