

2018



2019

ANNUAL REPORT

**KENAI PENINSULA BOROUGH SCHOOL DISTRICT
ONE DISTRICT: FORTY-FOUR DIVERSE SCHOOLS**



VISION

KPBSD will inspire all learners to pursue their dreams in a rigorous, relevant, and responsive environment.

www.KPBSD.org

Connect on Mobile App, Facebook, Instagram, LinkedIn, Twitter, YouTube



MESSAGE FROM JOHN O'BRIEN

2019-2020 INTERIM SUPERINTENDENT OF SCHOOLS

We are pleased to present KPBSD's 2018-2019 Annual Report. This publication is an opportunity to step back and review last year's accomplishments, highlights, and celebrate areas of excellence. In the coming year I look forward to helping our district successfully navigate a variety of challenges. Predictable and sustainable revenues are essential to ensure that KPBSD can continue to provide a high quality education for our students.

More students are suffering from trauma and have needs in the area of mental health support and building their own resiliency and healthy coping skills. Added emphasis will be placed on learning opportunities and supports for students, parents, and staff in the areas of the effects of trauma, adverse childhood experiences (ACES), and suicide and self-harm prevention. We

plan to accomplish this shift through implementing programs and efforts such as Sources of Strength, Youth Mental Health First Aid, Restorative Practices, and mental health resources from a variety of grants and community partnerships. Healthy students and positive school culture are paramount to student achievement, and we will strive to meet the needs of our students in this crucial area.

In 2019-2020 we will focus on positive school climate, and support of students' social and emotional needs.



MESSAGE FROM SEAN DUSEK

2018-2019 SUPERINTENDENT OF SCHOOLS

As the former superintendent, I am very proud of the students, staff and accomplishments we have seen over the last several years. We focused on building strong, positive relationships with all of our students and providing rigorous and relevant learning opportunities to promote academic growth. We continue to face challenges as our state works to develop a long-term, sustainable fiscal plan and our borough works to strengthen and diversify the local economy. We are fortunate that a main strength of the borough is the school district. I wish everyone the best as our district continues to seek improvement and remains focused on meeting the needs of every student every day.

STRATEGIC PLAN 2017-2022

The KPBSD is committed to prepare our students to be college or career ready through a rigorous, relevant, and responsive education.



<http://bit.ly/2Sv6xnh>



MESSAGE FROM PENNY VADLA PRESIDENT, KPBSD BOARD OF EDUCATION

The foundation of our work is to build and maintain collaborative, strong, positive relationships with our students, staff, partners, and communities. Our Strategic Plan, mission & vision guide us to empower all learners and inspire them to pursue their dreams. We completed the three waves of personalized learning (PL) training, and will continue to provide professional development.

Despite budgetary uncertainties, innovation continues to pave the way for every student. By providing varied educational prospects like expansion of concurrent credit opportunities, industry certifications, Upstream and CTE academies, expansion of distance education, and more, our students are thriving.

I am very optimistic our schools will continue to exhibit leadership in the state by preparing students to be ready for life during and beyond the K-12 school experience.

KPBSD BOARD OF EDUCATION

- Penny Vadla, *President*, District 4, Soldotna
- Zen Kelly, *Vice President*, District 9, South Peninsula
- Dan Castimore, *Clerk*, District 1, Kalifornsky
- Debbie Cary, District 7, Kasilof/Central
- Lynn Hohl, District 6, Seward/East Peninsula
- Mike Illg, *Treasurer*, District 8, Homer
- Dr. Greg Madden, District 5, Sterling/Funny River
- Matt Morse, District 2, Kenai
- Jason Tauriainen, District 3, Nikiski
- Tanis Lorring, *Student Representative*

The mission of the Kenai Peninsula Borough School District is to empower all learners to positively shape their futures.

K-12 SCHOOL FUNDING

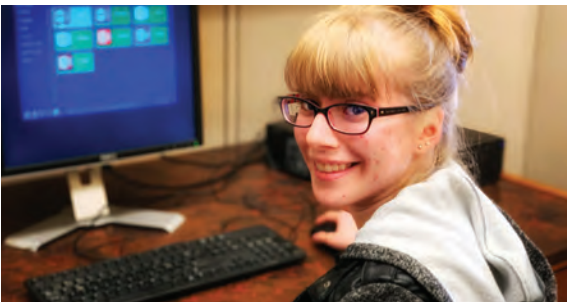
In February 2019, the Governor's proposed state budget reductions to the FY20 budget resulted in over \$20 million proposed reductions to KPBSD. The school board and administration worked diligently to determine what those reductions would need to be in order to begin to meet a cut this large in one year.



GOALS 2019-2020

- Develop policies and a budget plan, which promote the guiding principles of the five-year strategic plan
- Create partnerships to foster and strengthen positive relationships, which increase student educational opportunities
- Support further improvements in the areas of positive school climate, safety and social-emotional wellbeing

#ThankYou to 4,000 KPBSD school volunteers during 2018-2019!



KPBSD Distance Learning Programs offer a wide range of classes through an online format to prepare students for college and careers. The Microsoft certification programs positively validate in-demand technology skills as KPBSD reaches a milestone of certifying 243 students and teachers in the two years since becoming a Microsoft Certification Testing Center.



<http://bit.ly/2XleueQ>



Homer Middle School is a 2018 National Blue Ribbon School!

“Students, staff, parents, and the community of Homer are all responsible for this extraordinary achievement. This accomplishment is a result of support, hard work and dedication to high academic expectations.”
-Principal Kari Dendurent



<http://bit.ly/2zLhdGF>

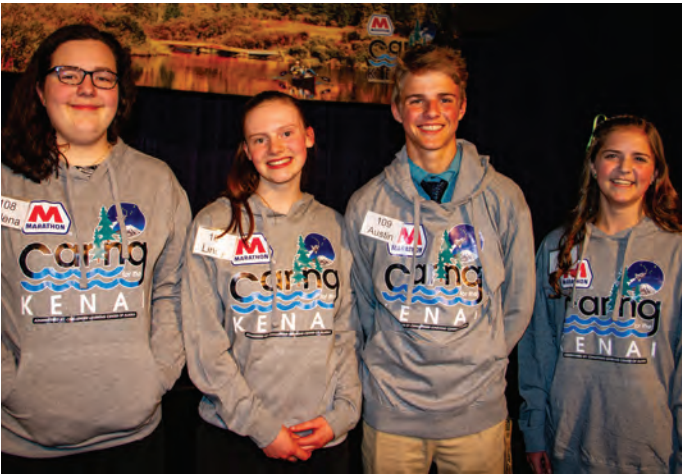


Natali Jones is 2018 Alaska School Counselor of the Year! Ms. Jones

is an itinerant counselor serving Chapman School Anchor Point Alaska, Homer Flex High School, Nanwalek School, Nikolaevsk School, Port Graham School, and Susan B. English School in Seldovia.



<http://bit.ly/2Y23hoM>



Caring for the Kenai

Q: “What can I do, invent or create to better care for the environment of the Kenai Peninsula or improve the area’s preparedness for a natural disaster?”

A: Drones, pollinators, 3D printer material, art ...



<http://bit.ly/32tGbqq>

Sources of Strength

is a strength-based comprehensive wellness program focusing on suicide prevention, but affecting other issues such as substance abuse, violence, resiliency and relationships. Teams of peer leaders mentored by adult advisors change peer social norms about seeking help, and encourage students to individually assess and develop positive strengths in their life. SOS is now in seven high schools, two middle schools, and one K-12 school. In fall 2019, SOS extends to Kenai Middle School and Nikiski Middle-High School.



<http://bit.ly/2zgwP6Q>



Upstream Academies increase STEM awareness and readiness among middle school students, especially for young people from underserved populations. Thank you to Marathon for a grant to make these programs possible.



<https://www.facebook.com/UpstreamAcademyKenaiPeninsula/>



AVERAGE YEARS OF EXPERIENCE WITH KPBSD

Teachers **9 YEARS**
Support staff **8 YEARS**



STUDENT TRANSPORTATION

Everyday school day, more than **3,466** students are transported **6,670** miles through our district.



STAFFING RATIOS

TYPE OF SCHOOL AND PUPIL-TEACHER-RATIO

20.5:1 Elementary schools with more than 250 enrolled students: **KINDERGARTEN**

22.5:1 Elementary schools with more than 250 enrolled students: **GRADES 1-3**

24.5:1 Elementary schools with more than 250 enrolled students: **GRADES 4-6**

19.5:1 Elementary small schools with 100 to 250 enrolled students: **GRADES K-6**

25:1 **MIDDLE AND HIGH SCHOOLS**

17.5:1 Small schools with less than 200 enrolled students **GRADES K-6**



HOMELESS

In the 2018-2019 school year, **224** KPBSD students were identified as homeless, using the federally required McKinney-Vento Act definition. These students ranged from Pre-K through the 12th grade, and received support services through our *Students In Transition Program* and homeless liaison staff.



DISTRICT SIZE

The school district is comprised of **44** diverse schools in 2018-2019, and with the closure of Soldotna Prep (9th grade) and Greatland Adventure Academy Charter School not opening, the 2019-2020 school year will begin with **42** schools in 17 diverse communities spanning **25,600** square miles—a land area roughly the size of West Virginia.



STUDENT NUTRITION SERVICES (SNS) SERVED

Lunches **487,667**
Breakfasts **158,822**
School Snacks **467**
Total meals & snacks served **646,956**



2018-2019 ENROLLMENT

Preschool **248**
Kindergarten-6th grade **4,773**
7th-8th grade **1,306**
9th-12th grade **2,568**
2017-2018 school enrollment ... **8,895**



PERSONNEL

District administration .. **12**
Building administration **39**
Certified staff **666**
Support staff **497**
Total **1,214**



DOLLARS & CENTS

\$0.74 Salaries and benefits
\$0.06 TRS/PERS On-Behalf
\$0.07 Discretionary accounts
\$0.07 In-kind services
\$0.05 Utilities
\$0.01 Transfers
= \$1.00 from 2017-2018 General Fund



KPBSD celebrates and thanks our community partners and the significant grants that help us meet our mission.



PERSONALIZED LEARNING (PL)

PL is restructuring schools, classrooms, and instruction to respond to the individual needs of students, instead of expecting students to fit a mold or adapt to structures that may not be successful for them.

PL asks teachers to redefine classroom practice, use quality data to regularly guide instruction, intentionally leverage technology tools, and promote student ownership of their learning. PL helps teachers truly meet the individual needs of students in their classrooms, empower all learners, and ensure a rigorous, relevant and responsive learning environment for all students. Key elements include:



- **Targeted Instruction**

Instruction aligns to specific student needs and learning goals

- **Data Driven Decisions**

Frequent data collection informs instructional decisions and groupings

- **Student Reflection and Ownership**

Ongoing student reflection promotes ownership of learning

- **Flexible Content and Tools**

Instructional materials are intentionally and strategically leveraged to allow for differentiated path and pace of learning, and meaningful performance tasks

Where do you want your learning to take you and how can KPBSD help you get there? #PLinKPBSD



Visit the PL website for videos, testimonials, stories, and FAQs:
<http://www.plkpbsd.org/>

KEY PERFORMANCE INDICATORS (KPI)

Students should be able to demonstrate their readiness in multiple ways beyond a standardized test score, and while test scores are one key readiness indicator often used in schools, they do not always show the whole picture. Key Performance Indicators are intended to provide a holistic view of a student's preparedness for life, career, and, or college choices. Our KPI's link directly to the strategic plan and the district's efforts to develop personalized learning environments in every classroom. Research indicates that the more indicators students attain, the greater chance they may have to be successful citizens in an ever-changing world.



<http://bit.ly/KPIsKPBSDdashboard>



BP TEACHERS OF EXCELLENCE

KPBSD celebrates our Kenai BP Teachers of Excellence and BP Educational Ally award recipient.



<http://bit.ly/2XC5sJA>

L-R: Superintendent Dusek; Wendy Todd (Paul Banks Elementary); Julie Doepken (Seward Elementary); Martha Fleming (Seward High); and Jennifer Hornung (Nikiski Middle-High)

KPBSD CLASS OF 2019 #AKlearns



**KPBSD AWARDED 557
HIGH SCHOOL DIPLOMAS
IN 2018-2019!**



CALEB NAPIER

Connections Homeschool

<http://bit.ly/2LXTd9P>

NICHOLAS REUTOV

Homer Flex School

<http://bit.ly/2YZsXj3>

DEXTER LOWE

Homer High School

<http://bit.ly/2Om9DF5>

FELESATA FEFELOV

Kachemak Selo School

<http://bit.ly/2JRq3XZ>

MICHAEL METZ

Kenai Alternative School

<http://bit.ly/2SpBDMW>

MARIA SALZETTI

Kenai Central High School

<http://bit.ly/2JQqjWv>

URIAH JOSEPH HUNTSMAN

Nanwalek School

<http://bit.ly/2JF3Cp6>

MICHAEL TRAIL

Nikolaevsk School

<http://bit.ly/2xWeQ1V>

BETHANY CARSTENS, KELSEY CLARK, AND EMMA WIK

Nikiski Middle-High School

<http://bit.ly/2Yc652B>

GARRETT KOCH

Nililchik School

<http://bit.ly/30MfLP4>

MONIQUE COOK

Port Graham School

<http://bit.ly/30L5cLM>

STEVEN HUNTER SMITH

River City Academy

<http://bit.ly/2XPCDA5>

MEGHAN MULLALY

Seward High School

<http://bit.ly/2Ly7KJV>

MYKENNA FOSTER

Soldotna High School

<http://bit.ly/2xTqRVZ>

AMY MCGLOTHEN

Susan B. English School

<http://bit.ly/2REIqSv>

ELENA BASARGIN

Voznesenka School

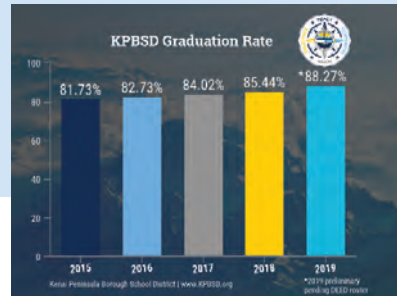
<http://bit.ly/2xZDIL0>

**THREE CITIES, THREE DECADES,
THREE LEADERS**
KPSBD graduate
#inspirations

Katie Koester
HOMER HIGH SCHOOL
CLASS OF 1998
Homer City Manager

Paul Ostrander
SOLDOTNA HIGH SCHOOL
CLASS OF 1986
Kenai City Manager

Stephanie (Arbelowsky) Queen
KENAI CENTRAL HIGH SCHOOL
CLASS OF 2000
Soldotna City Manager



KPBSD GRADUATES PROFILE PUBLIC SCHOOL SUCCESS AND INSPIRATION

Graduates are creative problem-solvers, neighbors, business owners, teachers, parents, volunteers, innovators, doctors, and more. Your school district is a positive investment and validates its vision to, “inspire all learners to pursue their dreams in a rigorous, relevant and responsive environment.” Every week KPBSD featured a graduate profile—if you are seeking inspiration or to learn about successful outcomes, read the online stories.

<http://bit.ly/GraduateStoriesKPSBD>

2019-2020 LEADERSHIP TEAM

- John O'Brien, *Interim Superintendent*
- Dave Jones, *Assistant Superintendent, Instructional Support*
- Nate Crabtree, *Human Resources Director*
- Pegge Erkeneff, *Communications, Community, and Government Relations Director*
- Christine Ermold, *Professional Learning and Federal Programs Director*
- Elizabeth Hayes, *Finance Director*
- Clayton Holland, *Student Support Services Director*
- Kevin Lyon, *Planning and Operations Director*
- John Pothast, *Innovation and Strategic Planning Director*
- Eric Soderquist, *Information Services Director*
- Tim Vlasak, *Schools and Compliance Director*



KENAI PENINSULA BOROUGH SCHOOL DISTRICT

148 North Binkley Street, Soldotna, Alaska 99669
907.714.8888 | fax: 907.262.9645 | kpbsd.k12.ak.us

YouTube: @KPBSDvideos | Facebook: KPBSD | Twitter: @KPBSD
LinkedIn: Kenai Peninsula Borough School District



Look for this symbol to read expanded online stories.



[http://bit.ly/
AnnualReport
FY19KPBSD](http://bit.ly/AnnualReportFY19KPBSD)

CONNECT WITH KPBSD

Become a Key Communicator, tune into Facebook Live Q&As, visit district and school social media sites, download the free mobile app (you learn about school closures or delay starts fast through the app), attend school events, Board of Education meetings, or subscribe to the KPBSDvideos YouTube channel. It is likely you have a story to share, questions, and a valuable perspective—the school district hopes to connect with you!



<http://bit.ly/KeyCommunicatorsKPBSD>