



Welcome to Seward High School Go Seahawks

2021-2022

I am Somebody.

I am responsible for my behavior, the results of my behavior,
and what I become in life.

Life does not accept excuses.

I will not let my need to be accepted by my peers keep me from doing what is
right.

I am Somebody.

I am unique and there never has been or will be another person like me.

I do not need to pretend to be something I am not.

I am Somebody.

I AM Somebody

Seward High School Vision:

Every student, without exception, future ready: Prepared for college, prepared for the global workplace, prepared for life.

The Administration

- ▶ Principal - Mr. Burns



DATA Climate Survey

- ▶ 38% Principal Frequently asks students for their Ideas
- ▶ 35% When students see another student being picked on they try to stop it.
- ▶ 45% When students break rules they are treated and disciplined fairly?

CLUBS

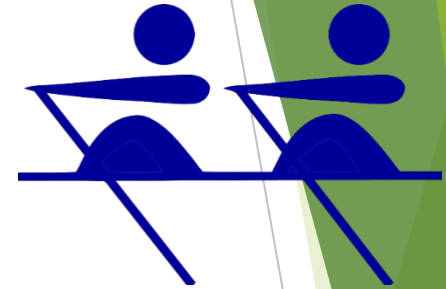
- ▶ Seward High has approximately 16 student clubs

Honors

Co-Curricular

Interest

Service

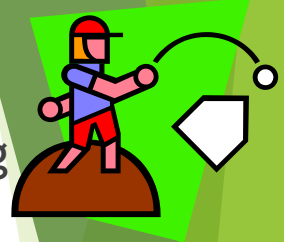
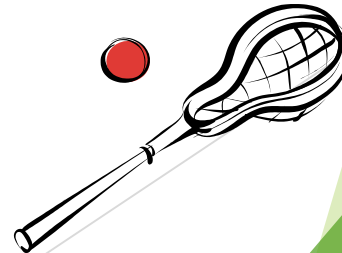
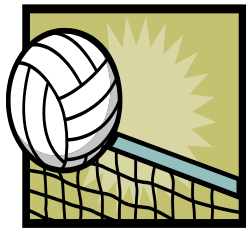


- ▶ Club Rush will be held during lunch. Students can attend during lunch.
- ▶ To sign up for Clubs (Poster boards will be set up in the commons)



ATHLETICS

- ▶ Minimum GPA of 2.0 for eligibility
- ▶ Grade Checks Apply to all students
- ▶ If a freshman has taken a HS course at the middle school they are eligible to play sports.
- ▶ Eligibility requirements will apply to 9th graders beginning second semester unless student is failing classes during grade checks.
- ▶ Athletic packets are Online All completed packets will be turned in to the Coach of the sport in which you wish to participate.



ATTENDANCE

- ▶ Official attendance for the day is taken in 2nd or 6th period.
- ▶ If you miss 2nd or 6th period, you will be marked absent.
- ▶ Admit Problems? See Attendance ??????????? in the Main Office.

- ▶ At 8:10 am all doors will be locked. To enter the school need to call the number listed on the door.

Attendance

- ▶ Report all absences before or on the day of the absence by calling the school 907-224-3351 ext. 9060 to report the absence.
- ▶ Your parent or guardian must call the day of the absence, or the absence will remain UNEXCUSED.
- ▶ Parents can call up to 2 days to excuse absence.



Excused vs Unexcused

Excused

- ▶ Illness (w/doctor's note)
- ▶ Accident
- ▶ Death in family
- ▶ Religious Holiday
- ▶ Subpoena

Unexcused

- ▶ Suspension
- ▶ Truancy/skipping
- ▶ All other reason that may be thought of will be counted as unexcused.

Make-Up Work for Excused Absences

Make-Up Work (for excused absences):

Students will assume responsibility for obtaining make-up work as determined by the classroom teacher. Students have two (2) school days for each day absent, not to exceed eight (8) school days total, to make up missed work. There may be classroom activities occurring that cannot be made-up and that will adversely affect grades. Students assume this risk and take full responsibility even if their absences are excused.

Truancies

Truancies:

Students who are absent for five days from school or class for reasons other than those permitted by state law will be considered truant. Unless a child subject to compulsory attendance laws is exempted, excluded, or expelled from school attendance, each five (5) days of unlawful absences constitutes a separate violation of Alaska State Law (AS 14.30.020).

Tardies



- ▶ If you are late to class without a pass, your teacher will mark your attendance record for the period, UNEXCUSED TARDY.

TARDY CONSEQUENCES

1ST TARDY - Teacher talks to student

2ND TARDY - Parent contact

3RD TARDY - WARNING LETTER & PARENT CONTACT

4TH TARDY - 1 DAY LUNCH DETENTION

5TH TARDY - 2 DAYS LUNCH DETENTION

6TH TARDY - AFTER-SCHOOL DETENTION

7TH TARDY - Saturday School

8TH TARDY - DISCIPLINE DETERMINE BY Administration

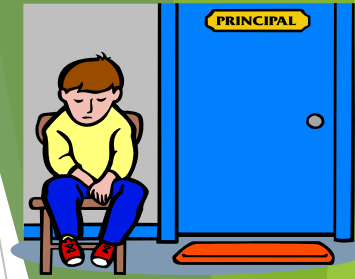
*Transportation for after-school detention is the responsibility of the parent/student.

***FAILURE TO SERVE TARDY CONSEQUENCES WILL RESULT IN THE NEXT CONSEQUENCE LEVEL FOR NON-COMPLIANCE WITH ASSIGNED DISCIPLINE.**

*TARDIES ARE CUMULATIVE EVERY NINE WEEKS.

***EXCESSIVE TARDIES TO FIRST PERIOD WILL RESULT IN LOSS OF PARKING PRIVILEGES.**

Discipline



LUNCH DETENTION - Work Detail

- ▶ Students must report to and check in with Mr. Burns in cafeteria.
- ▶ Attendance will be taken.
- ▶ Students must report no later than 10 minutes into the lunch period.
- ▶ Students will eat in the cafeteria and then receive instructions from Mr. Burns
- ▶ Students will be dismissed when the bell rings at the end of the period.

ISI

- ▶ ISI is held in Main Office.
- ▶ You will eat lunch at a different time than the student body.
- ▶ Work will be submitted by your teacher to be completed.

Open Campus

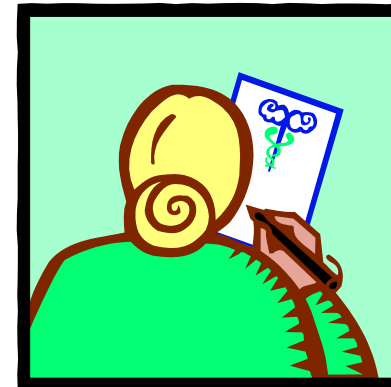
Sorry Freshman- you stay on Campus

- ▶ Once you arrive to school, whether you are a driver, dropped off, or ride a bus, you must remain on campus. Doors will be locked at 8:10am
- ▶ During Lunch- Freshman remain on Campus. No exceptions.
- ▶ If you leave without official permission during the school day (i.e. field trip, sign-out, school business), you will be considered truant and will be subject to disciplinary action.
- ▶ Main Office will not deliver lunch “drop-offs” to students.



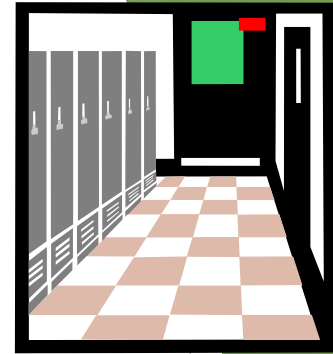
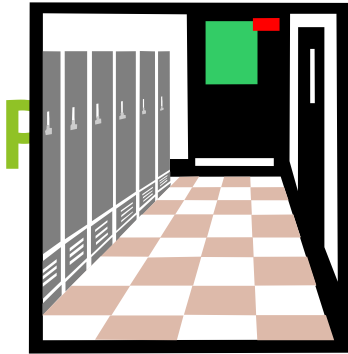
Sign In/out

- ▶ You must receive an admit from the Administration Office to be considered signed in/out.
- ▶ If you come to school after 8:00 am, you report to Main Office , sign in, and have an office pass to admit you to class.



Sign in/out procedures

- ▶ No emergency card (Powerschool) = no sign out.
- ▶ Proper identification is necessary. Person signing you out must be on Power School
- ▶ Only allowed 4 excused sign in/out; **excessive sign in/out will be unexcused unless a parent/guardian is present or medical /legal documentation is provided.**
- ▶ Pre-approved sign-outs must be presented before 7:40 AM in Main Office. Upon verification, a form is given to show your teacher to officially sign-out in Main Office .



- ▶ You must have an official hall pass from a teacher to be released from class.
- ▶ If found in the hallway w/o a pass, you will be escorted back to class or subject to the **ISI Room**
- ▶ Passes will not be given the **first or last ten minutes** of class.

Graduation Requirements

Make sure you talk to your guidance counselors to keep up with your status!



Bus Conduct

Bus Conduct:

Bus transportation is a privilege and may be revoked if students do not display good conduct in and around the bus or follow the directions of the driver. Further, students will pay restitution for damages they cause due to vandalism.

FRESHMAN, DID YOU KNOW...

- ▶ Freshman who have a GPA greater than 2.0 at the end of their freshman year have a 90% probability of success in earning their diploma!

Dress Code

- ▶ Some examples of inappropriate dress include: strapless, revealing neck lines, shirts that expose above the naval, exposed undergarments, and clothing which advertises sex, drugs, alcohol, violence, vulgarity, or gang related activities. Additionally, dress that is obscene, vulgar, or promotes violence will not be allowed.

Dress Code

- ▶ Undergarments showing (top or bottom) will not be allowed. The only exception to this rule is if the student is wearing a bra with see-through straps.
- ▶ Students will not be allowed to wear see-through clothing.
- ▶ Students will be subject to a dress length rule: each student must demonstrate to the chaperones that the length of their skirt reaches their fingertips when the students arms are hanging to the students side if questioned by chaperone or administrator.
- ▶ Students will not be allowed to wear clothing displaying alcohol, profanity, sex, drugs or drug paraphernalia on it.
- ▶ Students must realize that there are consequences for breaking these rules. Students will be asked to change their clothing or leave the dance.

Dress Code

“Remember to *Dress for Success*”



- ▶ **BE AWARE OF WHAT YOU WEAR!**
- ▶ The dress code will be enforced every day, including exam days. Dress for the workplace.
- See-through outer garment without appropriate undergarment
- ▶ Pants should be secured at the waist.
- ▶ Undergarments (boxer shorts) are not to be seen.
- ▶ NO TUBE TOPS
- ▶ No abdominal area exposed.
- ▶ No bedroom attire (i.e. slippers or pajamas) Unless Spirit Week and approved by Administration

NOTE: You will be put in ISI if change of clothing is not available!

DRESS CODE

DRESS CODE

- ▶ 1ST VIOLATION: Change clothes, parent phone call
- ▶ 2ND VIOLATION: Change clothes, one day lunch detention, parent phone call
- ▶ 3RD VIOLATION: Change clothes, 1 day of ISI, parent phone call
- ▶ 4TH VIOLATION: Subject to Saturday School

**If a student does not change his/her clothes during any of the above violations, that student will be sent to ISI for the remainder of the day.

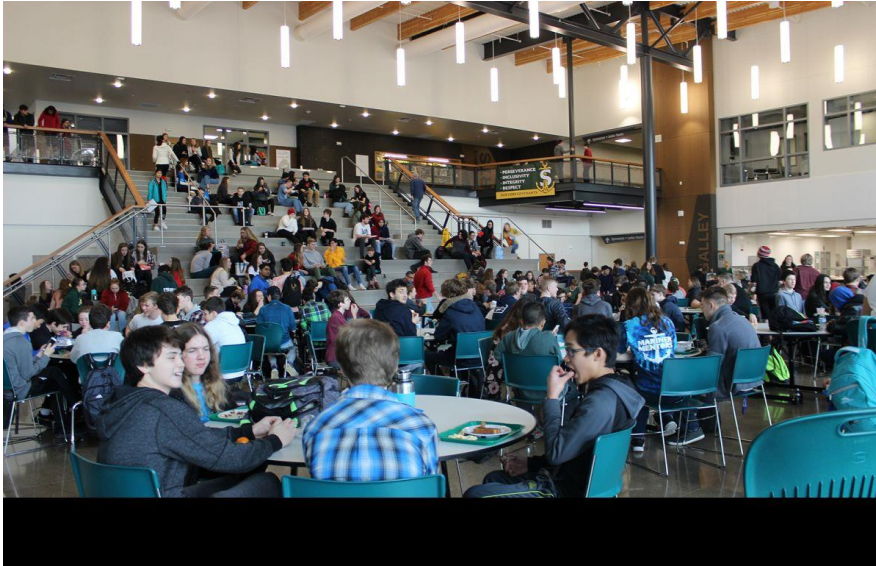
Cell Phones

- ▶ Cellular phones will not disrupt the learning environment.
- ▶ Cell Phone Policy
- ▶ Personal electronic devices used in classrooms will be for instructional purposes only. Student use of these devices for instructional purposes is at the discretion of the classroom teacher. Use of these devices in the classroom is subject to teacher scrutiny to ensure that student activities are appropriate to the lesson's learning outcome. Students found to be using personal electronic devices inappropriately are subject to disciplinary action that is consistent with the manner in which the personal electronic device is inappropriately used (i.e. cheating, disruption, harassment, etc.).



**Refusal to give an item to a
Administrator when asked
may result in disciplinary
actions**

Lunchroom Policies



- ▶ Freshman stay on campus
- ▶ 10-12 Graders have open campus
- ▶ If a 10-12 Grader is late four times in a grading period after lunch they lose the right for open campus lunch
- ▶ Pick up all garbage and dispose in garbage cans. Failure to do this results in Work Detail.
- ▶ Violations of these policies will result in work detail or other disciplinary measures.

Lockers



Sign up for your Locker
DURING LUNCH

- ▶ Ms. Star is in charge of lockers.
- ▶ Do not share lockers;
- ▶ Lockers may be searched at any time.
- ▶ Do not damage or vandalize lockers, you will be placed on the debt list for such actions.

Clinic (located in Main Office)

- ▶ You must have a pass from a teacher in order to be admitted in the clinic at anytime.
- ▶ You must be current with your immunizations. NO SHOTS=NO SCHOOL. (Certain situations can apply, please see the Nurse)
- ▶ Missing over 25 minutes of class constitutes an absence. If you are too sick to attend class, you will be asked to go home.



Bullying

- ▶ **Bullying** = any unwanted and repeated written, verbal, or physical behavior, including any threatening, insulting, or dehumanizing gesture, by a student or adult, that is severe or pervasive enough to create an intimidating, hostile, or offensive educational environment; cause discomfort or humiliation; or unreasonably interfere with the individual's school performance or participation.
- ▶ **Harassment** = any threatening, insulting, or dehumanizing gesture, use of data or computer software, or written, verbal or physical conduct directed against a student or school employee
- ▶ Types of bullying may include physical, verbal, emotional, sexual, and cyberbullying (internet, email, texts/IM's, social media accounts, fake web page/blog).
- ▶ Subject to a range of punishment including out of school suspension and change of placement.

Cyber-Bullying

- ▶ The use of technologies such as email, cell phone, text messages, instant messaging (IM), and defamatory personal websites to support deliberate, repeated hostile behavior by an individual or group.
- ▶ Bullying will be severely dealt with.
- ▶ It includes gossip (he said-she said), teasing, name calling.
- ▶ This will lead to suspension (Title IX Report) and referral to SRO.

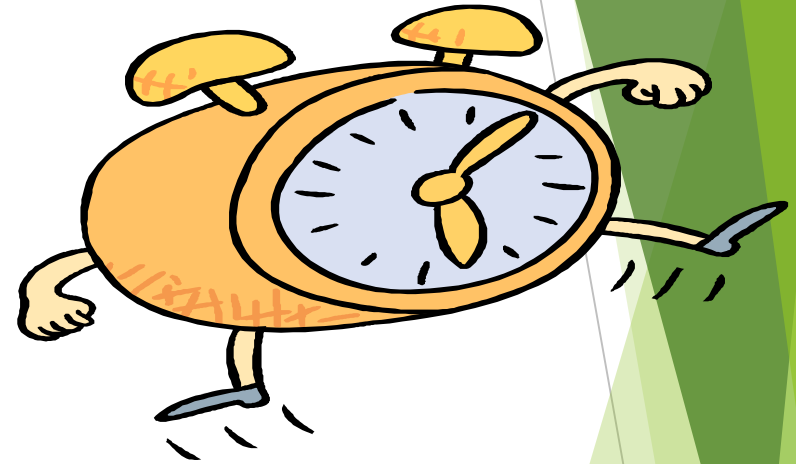
WEAPONS & DANGEROUS INSTRUMENTS

- ▶ No weapons are allowed on campus.
- ▶ If you can't take it on an airplane, don't bring it here.



After School Events

- ▶ You must be supervised by a teacher and/or coach if on campus after school hours. Failure to comply may result in disciplinary action including out of school suspension.
- ▶ If you attend events (i.e. Football games, dances, etc.), you must leave the campus/site after the event is over OR you will be banned from future functions and are subject to disciplinary action.



- Car riders are to be picked up in the front of the school.

Pride in your School/Campus

The Spotlight is on You



Students are not to walk on the grass.

Walk in the footsteps of students before you.



Please dispose of any unwanted items and garbage in the trash cans located throughout the campus.

Trespassing

- ▶ Students that do not attend Seward High School are **NOT** allowed on Seward High School campus for *any reason* during the school day.
- ▶ Violators of this policy may be subject to arrest and disciplinary action.



GO SEAHAWKS!!!

