

Federal Programs Meeting 5/7/15

Tim Vlasak – Welcome

Goal:

To be better about pushing out information about Federal Programs to public and Site Councils.

Introduction:

Tim Vlasak – K12 Assessment Director
Penny Vadla, Sunny Hilts– Board Member
Michelle Thomason – PD Coordinator
Michael Bernard – Kenaitze
Jane Beck, Bonnie Pierce– Project Grad
Rachel Pioch – School Tutor
Julie Williams – K12 Assessment
Hannah Vincent – ELL
Kelly King – Students in Transition
Marilyn Johnson – Principal Tebughna
Betsy Vanek – Fireweed – Parent Adv. Council Migrant Ed
Dorothy Waggoner, Parent

Title IIIa – ELL Hannah V. (ATT 1)

Handout
285 ELL – 24 classified
Improved Identification Practices
Administered Assessment in March
Test Moving to Online

Tim Vlasak - KPBSD on plan for ELL, don't make progress due to Graduate, FY14 45%-62% AMAO

Title I – Michelle Thomason (Att. 2)

1965 Funds Created
Addresses economically disadvantaged
Data from free and reduced lunch forms
40% threshold become eligible
19 sites received assistance - 1700 students
Budget - \$2, 008.125.00
PK & Reading Support

Tim Vlasak- All fund target specific students, based on census data along with free & reduced lunch identification

Hannah Vincent – When ELL students have a good PREK experience they're less likely to receive ELL service in K

Dorothy – PREK-2 good idea but how do you serve ones who go through after 2nd grade?

Migrant – Michelle Thomason (Att. 3)

Academic Supports
Tutoring
Teachers @ K-Selo, Razdolna, Voznesenka

Tim Vlasak – Changing problematic implementation due to an audit. Adjusting how services are delivered. Try to avoid pulling kids for support from core instruction.

Julie Williams – Once they qualify they're in for 3 years

Michelle Thomason – Yes, enrolled for 3 years

Students in Transition – Kelly King (Att. 4)

Goal – Access to same education as those with stable housing

Identification – assistance – public notice

Clothing, hygiene - case by case

Tim Vlasak – One of 4 districts who get any money at all. By kid count and a tiered system \$24,000 donated.

Kelly King – Donations accepted, cash, check and online.

Title IIA – Professional Development

Budget \$850,000

5 full time teachers – supports class size reductions

District-wide inservices

Singleton PD

PD rooms – Homer, Soldotna, Seward

Exploring lync to increase PD for Singleton

Title VII – Native and Indian Education – Tim Vlasak

Targeted assistance to Native/Indian students

FY14 992 \$391,473

KPNYL Built Support

Tutoring MS/HS

Performance based curriculum

Title 10 – Delinquent / Neglected and Youth in Detention

Marathon \$60K + 6K Kenai Youth Facility

Title VII– Continued

Project Grad SI Student received 48 participants—MS Credit

ANSEP - Student cost KPBSD travel

1086 Title next year \$443,703

ANSEP – 24 applied to summer academy

Culture and stem language

Priorities KPBYL, ANSEP/STEM, MS tutoring

CW – Pursue culture and language

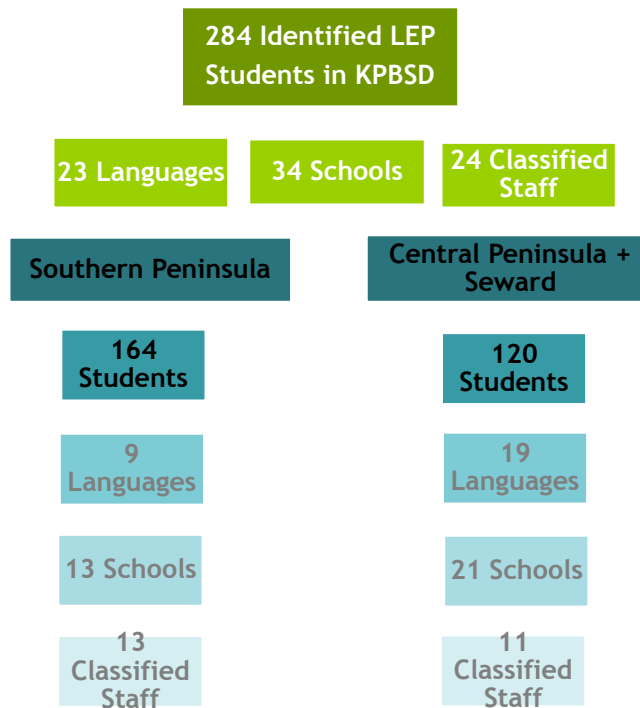
Increase coordination with tribal / corporations affiliations

Michael B – Maintain 2.0 GPA to be included w/ KPNYL – Keeping in mind that if we're spending \$ for those who are higher – what happens to the younger.

Tim Vlasak – Don't miss school but can participate

Bonnie – Work to regenerate

Title III-A



The 24 classified staff positions equate to 16.25 FTE.

Historical Data

2010-2011	Approx. 185 students
2011-2012	Approx. 203 students, 15 languages
2012-2013	Approx. 251 students
2013-2014	Approx. 257 students, 18 languages

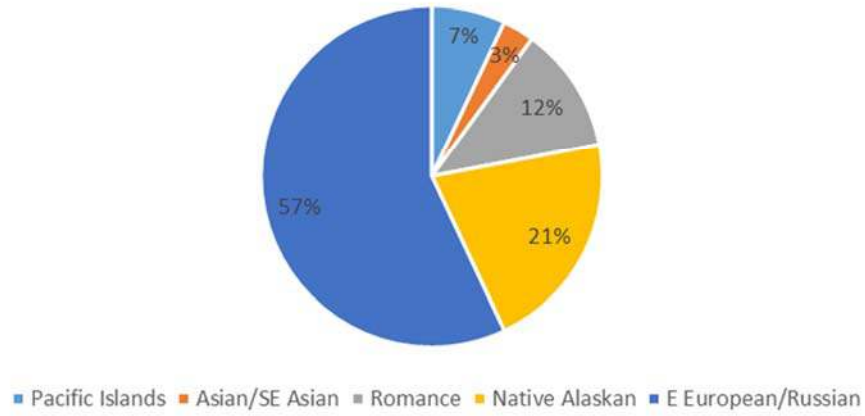
District Comparisons % LEP

KPBSD	3.12%
Anchorage	12.94%
Mat-Su	3.07%
Juneau	6.69%
Fairbanks	3.05%

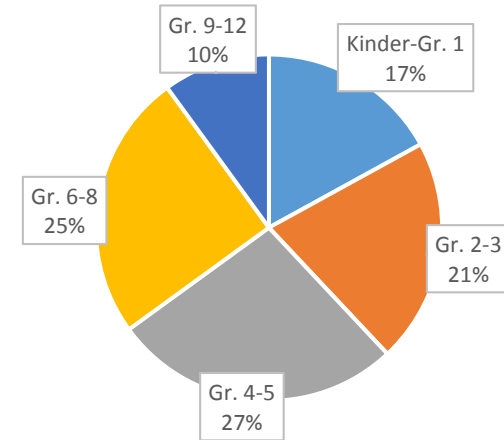
We have seen an increase in the number of students coming to us as 1st year immigrants, an increase in LEP-identified transfers from other districts, and an increase in the number of students identified due to more stringent requirements surrounding school registration paperwork.

The results of this year's administration of the annual English proficiency assessment (federally required test) will be available in June. In Spring 2016, the test will be online. The state will be holding a variety of trainings for the administration of this test beginning in the Fall. We will be working with KPBSD Information Services to prepare for this new online test.

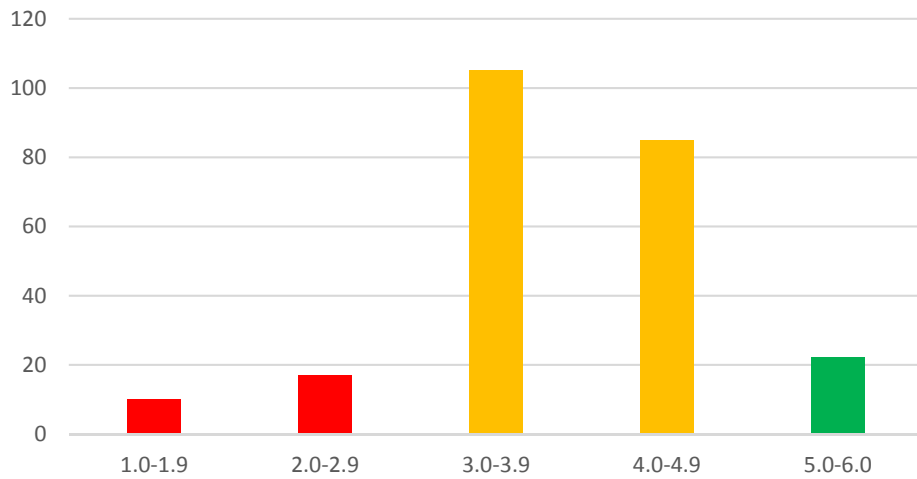
KPBSD ELL Enrollment Spring 2015
Languages Represented



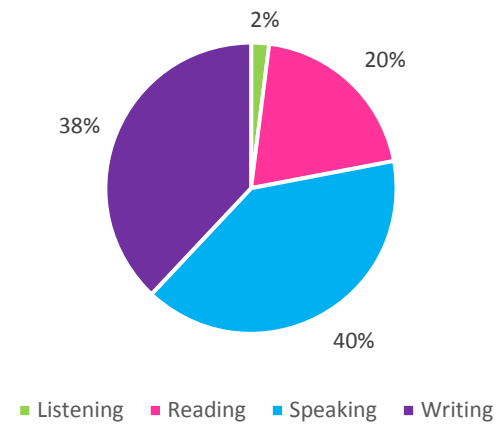
KPBSD ELL Enrollment Spring 2015
Grade Level Clusters Represented



2014 ACCESS Overall Score



2014 ACCESS
Students' Lowest Domain Scores





Title I

Purpose: Fair and equal educational opportunities to students identified as economically disadvantaged

Programs:

- 10 Pre-kindergartens serving 217 students
- Reading support in 19 sites to 300 kindergarten, first, and second graders

Support is provided only to identified struggling learners.

Budget: \$2,008,125

- 3/4 of the budget staffs 15 teachers , 4 paraprofessionals and support personnel
- Remaining 1/4 funds operating expenses and professional development

Outcomes:

64% of students showed academic growth in the first semester.

Migrant



Purpose: Supports the needs of migrant students across the district

Definition of a migrant student:

- Student who has traveled away from home
- Minimum of 7 nights and 8 days
- Economic necessity

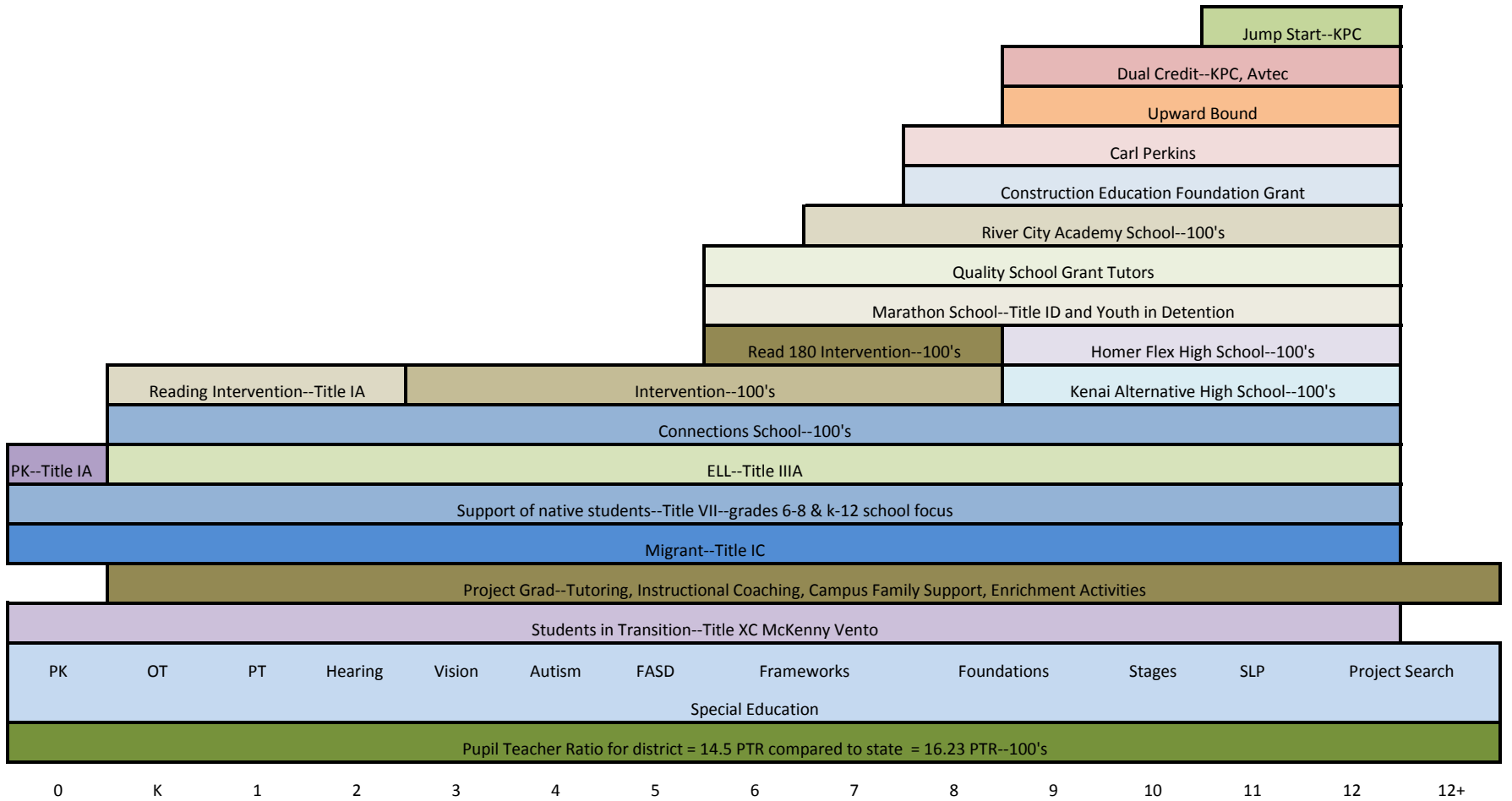
KPBSD has 411 migrant students

Budget: \$164,055

- 90% of the budget staffs 3 teachers and support personnel

Teachers provide tutoring or small group support in identified areas of academic need.

Student Opportunities



0 K 1 2 3 4 5 6 7 8 9 10 11 12 12+

PK OT PT Hearing Vision Autism FASD Frameworks Foundations Stages SLP Project Search



Title VII

Purpose: Provide supplemental supports for Alaska Native and American Indian students for a successful experience throughout K-12 schooling years through prioritized targeted assistance.

Program priorities and outcomes 2014-2015:

- Academic tutoring at 5 middle schools and 5 K-12 schools with majority of targeted students indicating catch up growth at semester
- Increased Native Youth Leadership opportunities through partnership with Project Grad had 55 high school students earning a 1/2 credit
- Support of culture and language opportunities
- ANSEP Middle School Academy had 48 middle school students qualify and complete. Additionally, 24 of these applied on their own for the summer program.

Budget:

- 2014-15 had 992 identified students equating to \$391,473
- 2015-16 has 1086 identified students predicting \$443,703



Proposed priorities for 2015-16:

- Continue academic tutoring based on prioritized need and previous successes
- Continue and expand KPNYL opportunities and maintain partnership with Project Grad
- Continue support of ANSEP academy opportunity and look for ways to expand
- Administrator tasked as Native Coordinator with focus on managing the Title VII grant, searching out and writing competitive grant opportunities, and increasing coordination with Native entities especially targeting culture and language opportunities