



# **CONNECTIONS BEFORE CONTENT**

**KENAI PENINSULA BOROUGH SCHOOL DISTRICT**

**WELCOME 2019-2020!**



# KENAI PENINSULA BOROUGH SCHOOL DISTRICT STRATEGIC PLAN 2017 - 2022

## OUR MISSION

Empower all learners to positively shape their futures.

## OUR VISION

KPBSD will inspire all learners to pursue their dreams in a rigorous, relevant and responsive environment.

## GUIDING PRINCIPLES

Every KPBSD student will graduate prepared for their future.

A strong, positive relationship with all students is the foundation of a quality education in KPBSD.

A KPBSD diploma guarantees a student is ready for life, college, and career.



## READY

- ♦ **Life:** KPBSD students will demonstrate life readiness skills by possessing resiliency, grit, and perseverance to achieve their goals with a growth mindset that empowers them to approach their future with confidence.
- ♦ **College:** KPBSD students will demonstrate college readiness by meeting rigorous academic indicators and, or post-secondary assessment scores.
- ♦ **Career:** KPBSD students will demonstrate career readiness by identifying a career interest and meeting employability or experiential benchmarks.



**#Ready**

**#Rigor**

**#Relevance**

**#Responsive**

**RIGOR** *All Students will achieve high levels of academic growth*

- ◆ Students will learn in a performance-based instructional model.
- ◆ Student growth and success will be determined through multiple measures of learning.
- ◆ Students will have “accessible anywhere” curriculum without dependencies on particular technologies.

**RELEVANCE** *Experience a personalized learning system*

- ◆ Students will learn in a flexible instructional model that is fluid and developmentally appropriate for all.
- ◆ Students will experience varied instructional strategies that target individual strengths and interests of each learner.
- ◆ Students will develop a personalized learner profile as demonstrated in their portfolio.
- ◆ Students will be given opportunities to develop healthy lifestyles and make healthy choices.
- ◆ Students will be provided instructional opportunities in partnership with parents and community that extend growth, exploration and learning beyond the classroom.

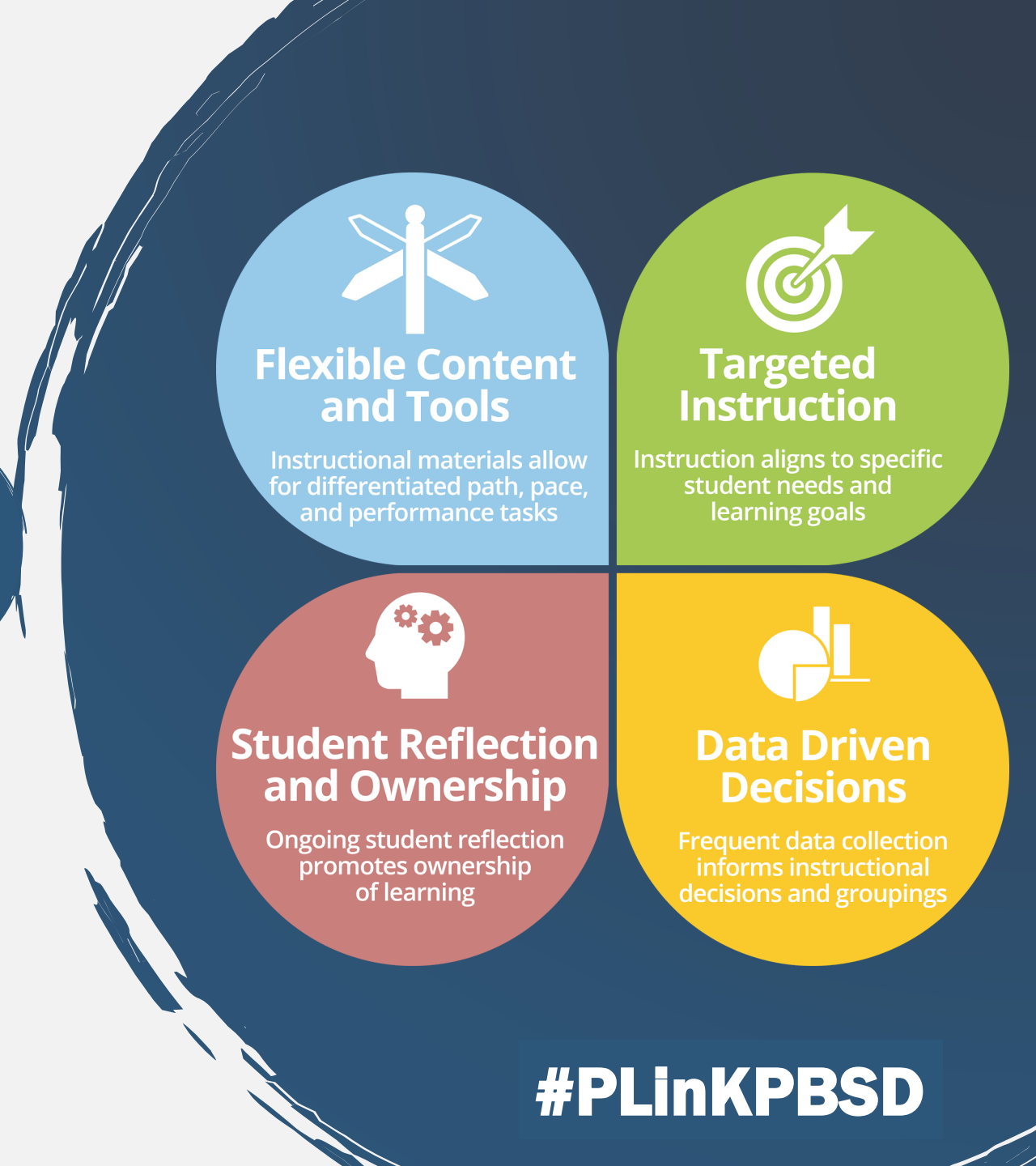
**RESPONSIVE** *Be immersed in a high quality instructional environment*

- ◆ Prioritize strong, positive relationships with all students to support their social and emotional needs.
- ◆ Teachers will utilize a repertoire of high-yield instructional strategies that are research-based, high quality instructional strategies, within the instructional environment.
- ◆ Develop a culture of continuous innovation within all schools across the district.
- ◆ Professional learning is embedded and ongoing, resulting in continuous growth and innovation.
- ◆ Develop a highly reliable and efficient organization through online and concurrent collaboration tools.

**plkpbsd.org**



**“Where do you want your learning to  
take you and how can KPBSD  
help you get there?”**



**#PLinKPBSD**

Morning: *All Staff*

# **District Messages**

Dominique Smith:  
**All Learning is  
Social and  
Emotional**

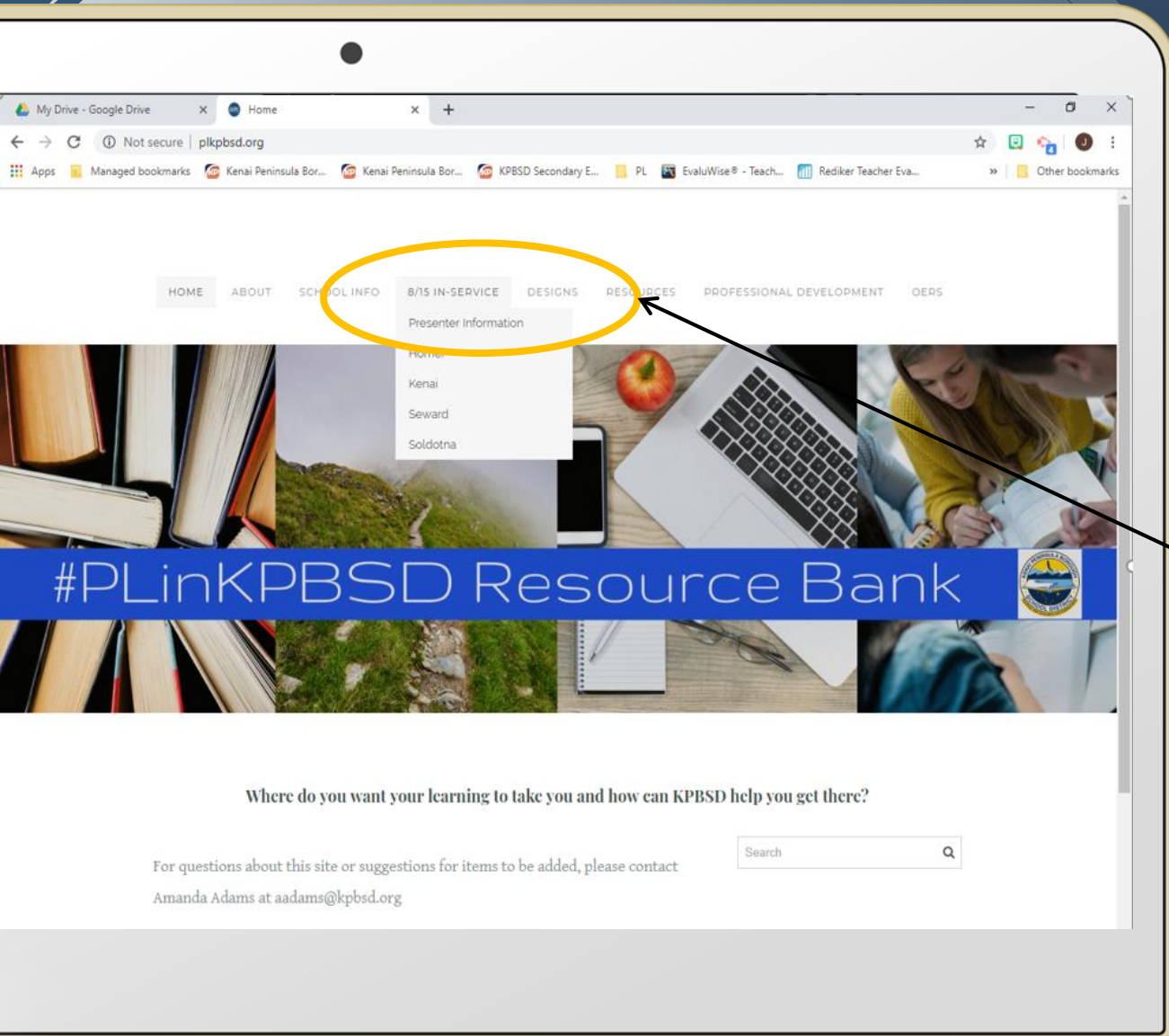
Afternoon:

*Certified Staff*

# **PL Summit**







**plkpbsd.org >**

**8/15 inservice tab**



**8/15 Inservice tab**

## Your Live Links

**Collaborate  
Innovate  
Grow**

**#PLinKPBSD**



### Summit Schedule:

1:00-1:35 Session 1  
1:35-1:45 Transition  
1:45-2:20 Session 2  
2:20-2:30 Transition  
2:30-3:05 Session 3  
3:05-3:10 Transition  
3:10-3:30 Debrief & Exit Ticket



Thank you to all who  
submitted proposals and  
are willing to share with  
their peers!

The afternoon of August 15th, KPBSD will hold a PL Summit at our four regional sites! The goal of the Summit is to celebrate and share effective PL strategies through collaborative sessions to both expand exposure to the practices and offer continual opportunity for innovation and growth. There will be 3 sessions with both face-to-face and virtual session options available. Click on your site below for more information!

### Regional Information:



#KPBSDSummit19

#PLinKPBSD

#cultureofinnovation

**SESSION #1 - 1:00-1:35****FACE-to-FACE Sessions**

Nikki Stein	How I got my Students to Take Ownership of Their Data	Room 10
Catherine Lyon	Choice Menu Board for ELA	Room 9
Jill Gann	Online Tools for Teachers and Students	Room 8
Meredith McCullough	Failure: The Most Important Option	Room 7
Christy Gomez	Integrating Trauma Informed Practices	Room 22
Kimberly Bates	Seesaw as a PL Digital Tool - for Newbies	Room 17
		Room 24

**VIRTUAL Sessions**

Panel - Kim, Sean, George, Kristin	Developing a Cross-District Community of Practice	Room 3
Kelli Doherty - Discovery Ed	Top Five Things to Know: Discovery Ed Experience (For Newbies!)	Room 2
Justin Toomer - Ed Elements	The First 20 Days of PL: using the core Four to Build a Personalized Classroom	Auditorium
Drew Schantz - Ed Elements	Now You Know It, Time to Show It: Designing Effective Performance Tasks	Library
Maria Morrisson Copolillo - Ed Elements	Building Habits within Your Students to Foster Goal-Setting and Ownership of Learning	Little Theater
Debra Sanders - ALEKS	<a href="#">ALEKS 101: For teachers new to ALEKS</a>	Room 6

**Independent Session**

No Facilitator / Device needed for access

[Playlist of New & Updated PL Resources](#)

NA

----- 1:34 - 1:45 Transition period -----

**SESSION #2 - 1:45 - 2:20****FACE-to-FACE Sessions**

Catherine Lyon	Early Writing for Extended Amounts of Time	Room 10
Dave Daniels	Personalized Learning and math Rotations	Room 9
Darcy Marcou	Data Tracking and Goal Setting in the Primary Grades	Room 7
Christy Gomez	Integrating Trauma Informed Practices - REPEAT	Room 22
Adrianne Bostic	Using MAP data to Promote Student Ownership and Reflection	Room 17
Jill Gann	Online Tools for Teachers and Students	Room 8





**KENAI PENINSULA BOROUGH SCHOOL DISTRICT**

**Penny Vadla,**  
**KPBSD Board of**  
**Education President**

**Anne McCabe,**  
**KPESA President**

**David Brighton,**  
**KPEA President**

**New School**  
**Year**  
**Welcome**  
**VIDEOS**







**John O'Brien**  
**Superintendent of Schools**  
**WELCOME to the**  
**2019-2020 school year!**

**#AKlearns**





# We all want an agreement.





**ONE  
VOICE:  
Advocating  
for Public  
Education!**





# **NURTURING THE HEAD & THE HEART**



# **Celebrate 30+ years!**

- **Barbara Ralston, 1989**
- **Jeri McLean, 1989**
- **Connie Todd, 1989**
- **Efrocia Polushkin, 1989**
- **Steven Klaich, 1988**
- **Cindy Aldridge, 1988**
- **Acela Carr, 1988**
- **David Daniel, 1986**
- **Carol Nolden, 1986**
- **Amy Budge, 1985**
- **Greg Reser, 1983**







# Self-Care for caring professionals



**We must take  
care of ourselves  
if we are to take  
care of our  
children &  
students.**



**What keeps  
you  
centered?**

**What keeps  
me  
centered?...**





# My Rock and Foundation





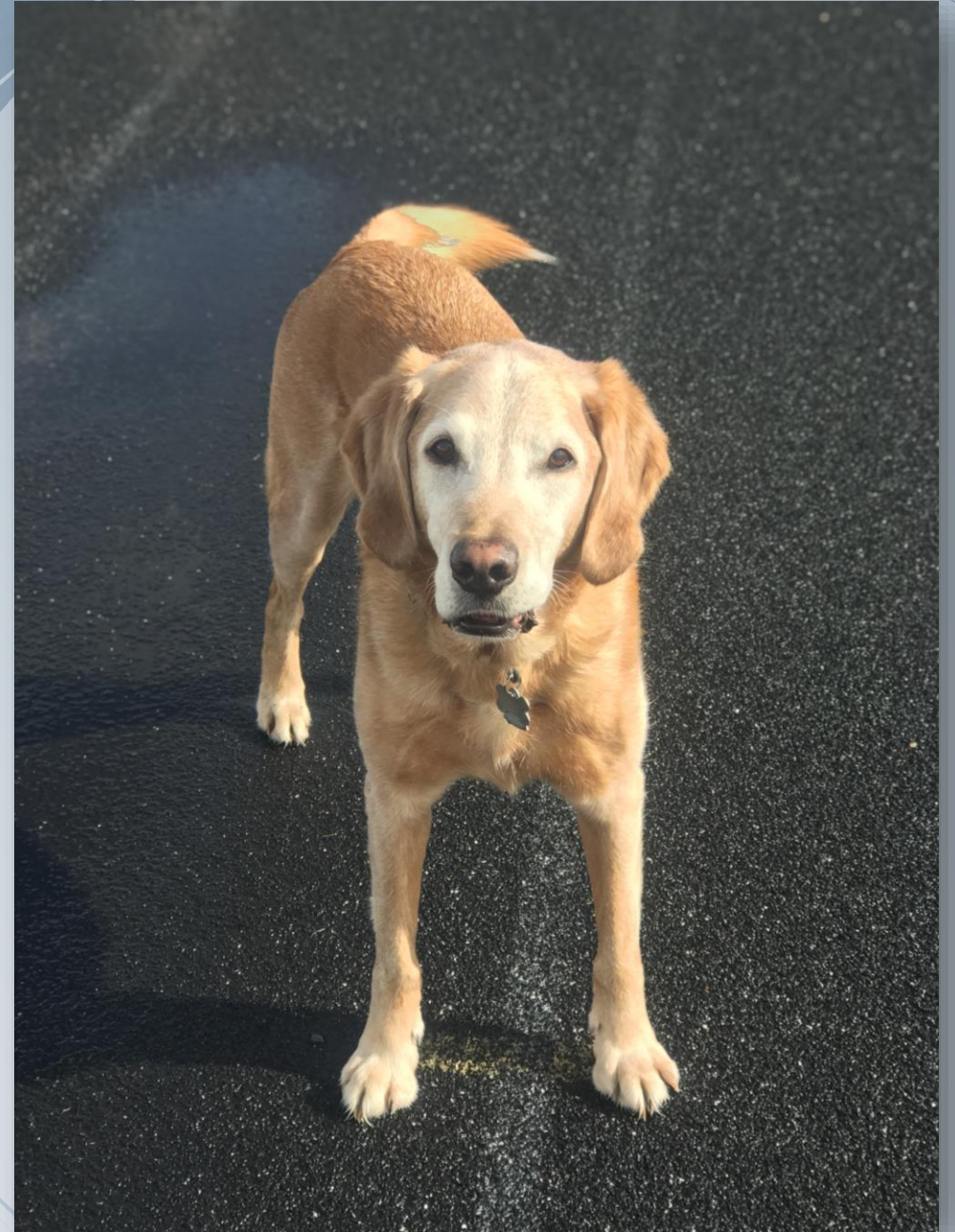


**#family**



# Owen

**August 8, 2010 – June 15, 2019**





# KENAI PENINSULA BOROUGH SCHOOL DISTRICT STRATEGIC PLAN 2017 - 2022

## OUR MISSION

Empower all learners to positively shape their futures.

## OUR VISION

KPBSD will inspire all learners to pursue their dreams in a rigorous, relevant and responsive environment.

## GUIDING PRINCIPLES

Every KPBSD student will graduate prepared for their future.

A strong, positive relationship with all students is the foundation of a quality education in KPBSD.

A KPBSD diploma guarantees a student is ready for life, college, and career.



## READY

- ♦ **Life:** KPBSD students will demonstrate life readiness skills by possessing resiliency, grit, and perseverance to achieve their goals with a growth mindset that empowers them to approach their future with confidence.
- ♦ **College:** KPBSD students will demonstrate college readiness by meeting rigorous academic indicators and, or post-secondary assessment scores.
- ♦ **Career:** KPBSD students will demonstrate career readiness by identifying a career interest and meeting employability or experiential benchmarks.

## RIGOR *All Students will achieve high levels of academic growth*

- ♦ Students will learn in a performance-based instructional model.
- ♦ Student growth and success will be determined through multiple measures of learning.
- ♦ Students will have "accessible anywhere" curriculum without dependencies on particular technologies.

## RELEVANCE *Experience a personalized learning system*

- ♦ Students will learn in a flexible instructional model that is fluid and developmentally appropriate for all.
- ♦ Students will experience varied instructional strategies that target individual strengths and interests of each learner.
- ♦ Students will develop a personalized learner profile as demonstrated in their portfolio.
- ♦ Students will be given opportunities to develop healthy lifestyles and make healthy choices.
- ♦ Students will be provided instructional opportunities in partnership with parents and community that extend growth, exploration and learning beyond the classroom.

## RESPONSIVE *Be immersed in a high quality instructional environment*

- ♦ Prioritize strong, positive relationships with all students to support their social and emotional needs.
- ♦ Teachers will utilize a repertoire of high-yield instructional strategies that are research-based, high quality instructional strategies, within the instructional environment.
- ♦ Develop a culture of continuous innovation within all schools across the district.
- ♦ Professional learning is embedded and ongoing, resulting in continuous growth and innovation.
- ♦ Develop a highly reliable and efficient organization through online and concurrent collaboration tools.



Kenai Peninsula Borough School District

148 N. Binkley Street, Soldotna, Alaska 99669 | 907.714.8888 | [www.KPBSD.org](http://www.KPBSD.org)





## Flexible Content and Tools

Instructional materials allow for differentiated path, pace, and performance tasks



## Targeted Instruction

Instruction aligns to specific student needs and learning goals



## Student Reflection and Ownership

Ongoing student reflection promotes ownership of learning



## Data Driven Decisions

Frequent data collection informs instructional decisions and groupings



# **RESPONSIVE:**

**Fostering strong & positive relationships with all students to support their social & emotional needs.**

**–KPBSD Strategic Plan**





**“Healthy students and **positive school culture** are paramount to **student achievement**.**

**We will strive to meet the needs of our students in this crucial area.”**

**–Superintendent O’Brien**



# WHAT IS SOCIAL AND EMOTIONAL LEARNING (SEL)?





# SEL is...

The process through which **children and adults** acquire and effectively apply the knowledge, attitudes, and skills necessary to understand and **manage emotions**, set and achieve positive goals, feel and show **empathy** for others, establish and maintain **positive relationships**, and make **responsible decisions**.



# Framework for Systemic Social Emotional Learning

## SEL:

- Happens Everyday in Every Classroom
- Is HOW we Teach and Learn
- Happens Across Multiple Settings





# ACES DEFINED

An adverse childhood experience (ACE) describes a **traumatic experience** in a person's life occurring **before the age of 18** that the person **remembers as an adult.**





# **TRAUMA INFORMED AND SENSITIVE**





# CATEGORIES OF ACES

ABUSE	NEGLECT	HOUSEHOLD DYSFUNCTION
<b>Emotional</b> <b>Sexual</b> <b>Physical</b>	<b>Physical</b> <b>Emotional</b>	<b>Living with someone:</b> <ul style="list-style-type: none"><li>• with mental illness</li><li>• who abuses substances</li><li>• who was incarcerated</li></ul> <b>Witnessing domestic violence</b>  <b>Experiencing a separation or divorce</b>



# TRAUMA CAN IMPAIR LEARNING

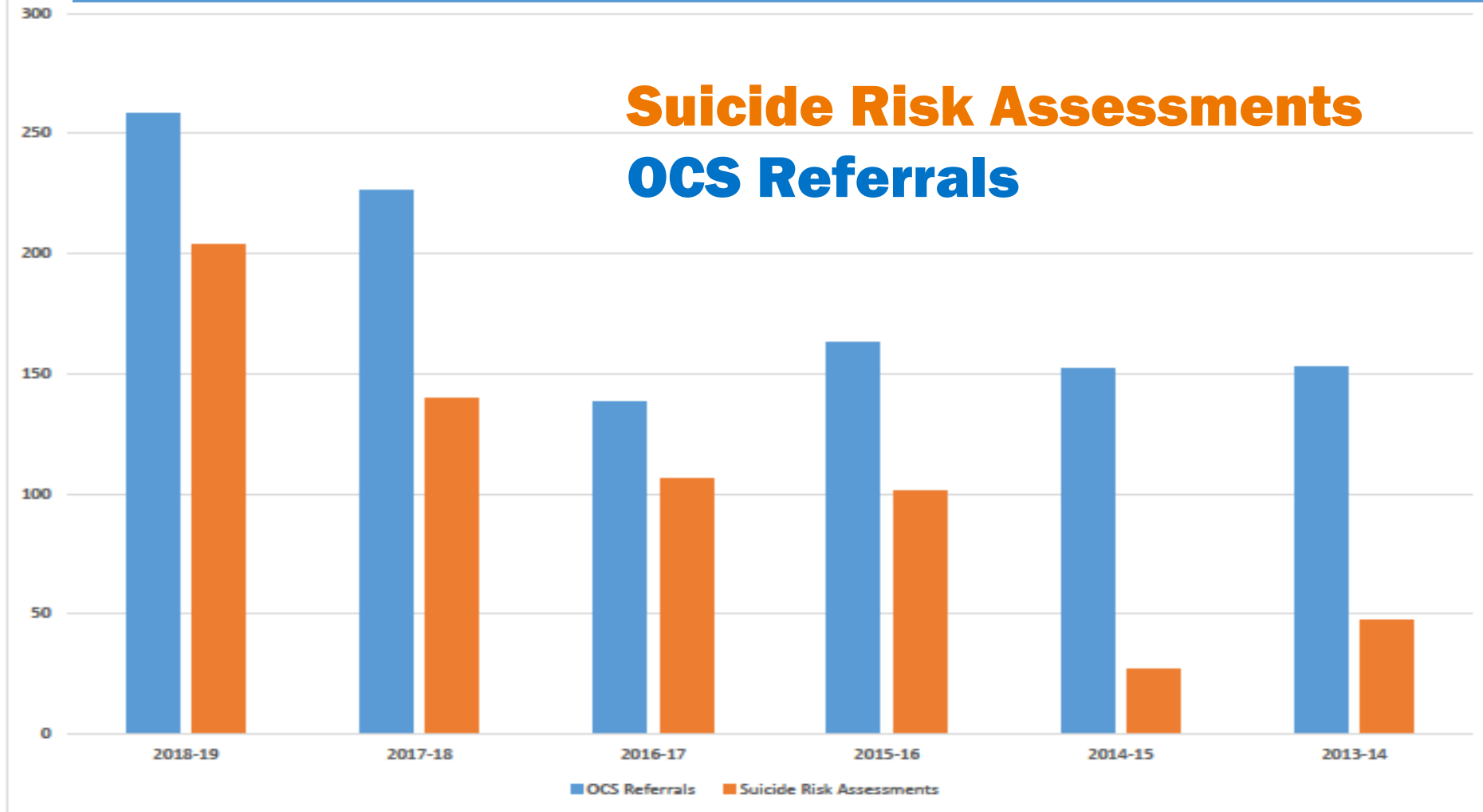
- ✓ Affect attention, memory and cognition
- ✓ Reduce ability to focus, organize and process information
- ✓ Interfere with problem-solving and planning
- ✓ Result in frustration and anxiety





# KPBSD Assessment Referral Comparisons

## Suicide Risk Assessments OCS Referrals



- **KPBSD Core Curriculum Professional Development**
- **Youth Mental Health First Aid**
- **Sources of Strength**
- **The Great Body Shop**
- **Fourth R and Fourth R Plus**
- **Trauma Informed Educators - Dr. Linda Chamberlain**
- **Mandt Training**
- **Fetal Alcohol Syndrome Disorder (FASD)**
- **Life Space Crisis Intervention Training**



# **KPBSD STAFF TRAINING AND PROFESSIONAL DEVELOPMENT**





# KPBSD CURRICULUM - PREVENTION & RESILIENCY

- Youth Mental Health First Aid
- Fourth R and Fourth R Plus
- Sources of Strength
- Common Sense Media
- Great Body Shop
- PBIS



# DEPARTMENT OF EDUCATION ELEARNING MODULES

**eLearning Modules are web-based, interactive training courses for educators**

<b>Overcoming ACEs</b>	<b>Trauma-Sensitive Schools</b>	<b>Suicide Awareness</b>
<b>Suicide Prevention</b>	<b>Suicide Intervention</b>	<b>Responding to Suicide - Postvention</b>
<b>Prenatal Alcohol and Drug Related Disabilities</b>	<b>Domestic Violence and Sexual Assault</b>	<b>Opioids and the Overdose Epidemic</b>





- Positive Behavioral Intervention Supports (PBIS)
- Interventionists
- Special Education Behavioral Programs
  - Stages, Foundations, and Frameworks
- Social Skills Training for Targeted Student Needs

## TIERED LEVEL OF SUPPORTS



# DISTRICT PROVIDED SUPPORTS

**NURSES**  
**PSYCHOLOGISTS**  
**COUNSELORS**  
**HOMELESS LIAISONS**





# **Additional Mental Health Services Are Needed**

**Social  
Workers**



**AND**



**Counselors**



# **GRANTS TO SUPPORT THE WORK**





# Competitive Grants that Support SEL Supplemental Programs

## KPBSD Competitive Grant Applications 2015-2019

### Past Grant Awards (2015-2019)

Grant Name	Time/Year	Amount	Purpose	Source	Total Funding	Notes:
<b>Project Aware</b>	2015-2019	Approx. \$206,000 per year	SEL Counselors at Alternative Schools	DEED	\$1,030,000.00	3 Districts received funding from DEED to provide counselors to Alternative Schools
<b>Project Aware Training</b>	2015-2019	Approx. \$9,000 per year	Training for Youth Mental Health First Aid	DEED	\$45,000	Currently we have 5 in-district trainers to deliver Youth Mental Health First Aid. These PD funds supported our district getting substitutes for the 8 hour training
<b>SAPP Suicide Awareness – post and prevention</b>	2016-2018 3 years	\$25,000 per year	Suicide Prevention Activities (Sources of Strength, Fourth R)	DEED	\$50,000	Each grant year we received additional funding at the end of each grant cycle. Additional funding was used to provide training of trainers to district employees and additional PD for teachers and students
	2018-2019	\$55,170			\$55,000 (2018-2019)	
<b>GCI Suicide Prevention Grant</b>	2016	\$20,000	Sources of Strength	Alaska Childrens' Trust/GCI	\$20,000	Supported Sources of Strength training and student wellness conference
<b>GCI Suicide Prevention Grant</b>	2017	\$20,000	Sources of Strength	Alaska Childrens' Trust/GCI	\$20,000	Supported Sources of Strength training and student wellness conference
<b>GCI Suicide Prevention Grant</b>	2018	\$20,000	Sources of Strength/Trauma Informed	Alaska Childrens' Trust/GCI	\$20,000	Supported Sources of Strength training and student wellness conference

# Competitive Grants that Support SEL Supplemental Programs

Current Grant Awards (2019-2023)						
<b>SAPP Suicide Awareness – post and prevention</b>	2019-2022	\$25,000 per year	Sources of Strength expansion, Trauma Informed Practices, Restorative Practices	DEED	\$75,000	Sources of Strength, Trauma Informed Practices and Restorative Justice
SEL Innovation Award	2018-2019	\$25,000	Trauma Informed Practices; Sources of Strength	NoVo <del>Foundation</del> Foundation And Education First	\$25,000	Sources of Strength, Trauma informed Practices (Dr. Chamberlain) and Restorative Practices (Kerri Berkowitz)
Title I D Comp	2019-2022	\$91,600	At-Risk HS Youth and Community Probation	DEED	\$240,000 if awarded all three years	Support transitions for students in DJJ and community probation



**\$1,580,000**

**Total Grants  
Supporting SEL  
Received  
2016 - Present**



# ***Pending***

## **Competitive Grants that Support SEL Supplemental Programs**

Grants Proposals Applied for – Awaiting Aware Notification						
Alaska Children's Trust Tier 2 – Innovation	2019-2020	Potential Funding \$50,000	SEL Programs in Elementary Schools, Trauma Informed practices	Alaska Childrens' Trust/GCI	\$50,000	PL – SEL programs in elementary schools
GCI Suicide Prevention Grant	2019-2020	Potential Funding \$20,000	Suicide Prevention	Alaska Childrens' Trust/GCI	\$20,000	Suicide Prevention (Youth Mental Health First Aid)
School Climate Transformation	2019-2024	\$750,000 per year for 5 years		US Department of Education	\$3,500,000	Elementary Social Emotional Schools Counselors

**Total SEL  
Grants  
Pending for  
2019 - 2024**

**\$4,500,000**





# BEHAVIORAL HEALTH AGENCY PARTNERS

- ❖ Central Peninsula Hospital
- ❖ Peninsula Community Health Services
- ❖ Seaview Community Services
- ❖ Kenaitze Indian Tribe (Na'ini Family and Social Services)
- ❖ Ninilchik Tribal Council Health Services/Community Outreach
- ❖ Chugachmiut Behavioral Health
- ❖ South Peninsula Behavioral Health Services (The Center)
- ❖ Seldovia Village Tribal Clinic
- ❖ University of Alaska, Anchorage Center for Human Development



# **Behavior Threat Assessment Process**

**\*An intervention and prevention tool for when a serious threat is made by a student**

**\*Multidisciplinary teams trained from each school**

**\*Ongoing training and support from the district**



# Positive School Climate & Culture

Student Engagement in their  
own learning

Restorative vs. Punitive  
Discipline Practices

Hanover Survey Benchmarking  
and Goal Setting





# **Expressing Our Gratitude**

**Gratitude is a  
powerful  
catalyst for  
happiness**



**“Gratitude can transform  
common days into  
thanksgivings, turn routine jobs  
into joy, and change ordinary  
opportunities into blessings.”**

**--William Arthur Ward**



**Lasting effects on the brain**

**Unshackles us from toxic emotions**

**Helps even when we don't share it**

**Benefits take time:  
2 consecutive weeks has  
lasting, positive effects**

**Gratitude  
Research**



# Gratitude has been linked to:

- **Decreases depressive symptoms**
- **Decrease in stress**
- **Reduction of toxic emotions**
- **Increase in overall happiness**
- **Greater feelings of relaxation**



I am  
thankful  
for...



TODAY, I AM THANKFUL FOR:

FAMILY, FRIENDS, MENTORS, MY  
PETS, BASKETBALL, SUNSHINE, THE  
RIVER, SNOW, NATURE, MY HEALTH,  
LAUGHTER, WEEKENDS, DOCTORS,  
MY HOME, BOOKS, SLEEP, TEACHERS,  
BABIES, MY SAFETY, TIME, WATER,  
LOVE, KINDNESS, CAMPFIRE,  
DESSERT, ART, FREEDOM, RAINBOWS,  
MUSIC, SUNRISES, FUN, SUNSETS,  
MOUNTAINS, THE BEACH, MY ELDERS,  
MOVIES, ELECTRICITY, MY SIBLINGS,  
MEDICINE, THE INTERNET, EYESIGHT,  
HEARING, MY COUNSELORS, TASTES,  
COLORS, MY HEART, THE STARS, MY  
PHONE, SHOES, MY CULTURE, MY JOB,  
LIFE, HOPE, FLOWERS, QUIET, HUGS,  
HEAT, FRIDAYS, AIR CONDITIONING,  
SPIRITUALITY, DANCING, GOOGLE,  
FOOD, CREATION, BAND-AIDS, BOATS,  
CHANGE, COFFEE, TOOTHBRUSHES,  
TREES, NETFLIX, VACATIONS, PEACE,  
RAIN, SECOND-CHANCES, FAITH,  
SPRING, SUMMER, TV, ACCEPTANCE,  
GENEROSITY, HONESTY, DREAMS.

#THANKFULNESSCHALLENGE #SOURCESOFSTRENGTH



SOURCES  
OF STRENGTH

## THANKFULNESS CHALLENGE

I AM THANKFUL FOR:

1

2

3

NAME \_\_\_\_\_

#THANKFULNESSCHALLENGE #SOURCESOFSTRENGTH



**Welcome back and  
#thankyou to all  
new and returning  
staff!**



**NEXT:  
“One Voice”  
slideshow &  
Thankfulness  
Challenge**



# What are you thankful for?



Use the QR Code or bit.ly  
to access the Thankfulness Survey

In 3 words or less,  
write what you are thankful for,  
then offer  
your answer

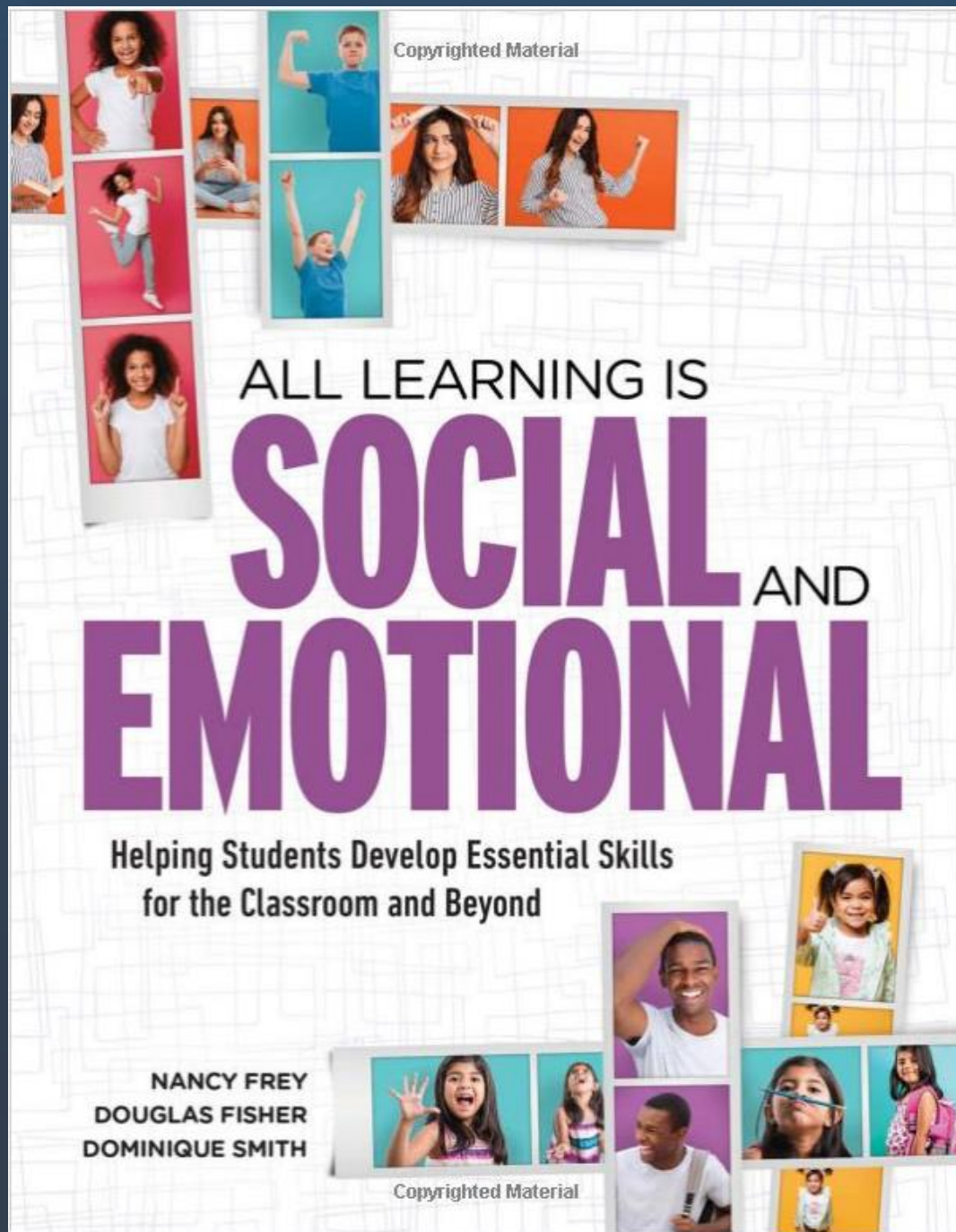
**Bit.ly/KPBSDThankful**

**Submit multiple entries!**

**8.15.19**  
**@KPBSD**  
**Thankful**  
**Thoughts**  
**“What**  
**are you**  
**thankful**  
**for?”**







**Dominique Smith**