



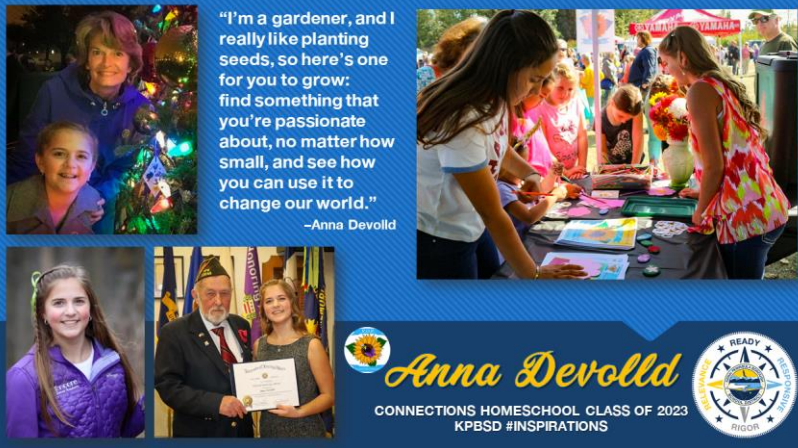
Superintendent John O'Brien
January 22, 2020
Soldotna Chamber of Commerce
Kenai Peninsula
Borough School District

KPBSD: LOOKING FORWARD IN 2020

Where do you want your learning to take you and how can KPBSD help you get there?

- **Anna DeVolld - Connections**

Promote Our Pollinators



- **Student Voice Leaders (SVL) from high schools**
Meet monthly via Skype
- **Kenai Peninsula Native Youth Leaders (KPNYL)**
- **Quarterly academic honorees!**

Celebrate STUDENTS!



BP Classrooms of Excellence Grant

- **Joanna Fonkert**, Homer Connections, \$7,000
Starlab Mobile planetarium
- **Jason Daniels**, K-Beach Elementary, \$3,000
Adopt A Stream

State leadership

- Homer Middle School **Principal Kari Dendurent** Region III Principal of the Year!
- Kenai Middle School Assistant **Principal Dan Beck**, Region III Assistant Principal of the Year AND State of Alaska 2020 Assistant Principal of the Year!

**Tustumena Elementary – 2019
National ESEA Distinguished School**

Celebrate STAFF



KENAI PENINSULA BOROUGH SCHOOL DISTRICT STRATEGIC PLAN 2017 - 2022

OUR MISSION

Empower all learners to positively shape their futures.

OUR VISION

KPBSD will inspire all learners to pursue their dreams in a rigorous, relevant and responsive environment.

GUIDING PRINCIPLES

Every KPBSD student will graduate prepared for their future.

A strong, positive relationship with all students is the foundation of a quality education in KPBSD.

A KPBSD diploma guarantees a student is ready for life, college, and career.



READY

- ♦ **Life:** KPBSD students will demonstrate life readiness skills by possessing resiliency, grit, and perseverance to achieve their goals with a growth mindset that empowers them to approach their future with confidence.
- ♦ **College:** KPBSD students will demonstrate college readiness by meeting rigorous academic indicators and, or post-secondary assessment scores.
- ♦ **Career:** KPBSD students will demonstrate career readiness by identifying a career interest and meeting employability or experiential benchmarks.

STUDENTS
ARE

REFLECTING

ON THEIR
PROGRESS
IN SKILLS &
LEARNING

• REGULAR •
GOAL
SETTING ON A VARIETY
ASPECTS OF
THEIR
LEARNING
USING DATA

FLEXIBLE CONTENT, PATH, PACE

MAKING CHOICES CO-DESIGNING
LEARNING
EXPERIENCES

Personalized Learning

STAFF
ARE

GETTING PD

THROUGH
COURSES
WORKSHOPS
STAFF
MEETINGS
IN-SERVICES

• REGULARLY •
SHARING
PRACTICE ON A WIDE
VARIETY
ASPECTS
COLLABORATING

GETTING INTO EACH OTHER'S
CLASSROOMS

LEARNING WALKS SEEING PL IN
ACTION &
COLLECTING
IDEAS

WHAT MAKES A PL CHAMP?

CHARACTERISTICS...

- Passionate about Innovation
- Growth Mindset
- Reflective Practitioner
- Strong desire to Collaborate
- Willingness to be a Leader
- Active PL Practice
- Desires Feedback

*And fundamentally... the belief that PL practices are
the best way to meet every student where they are!*

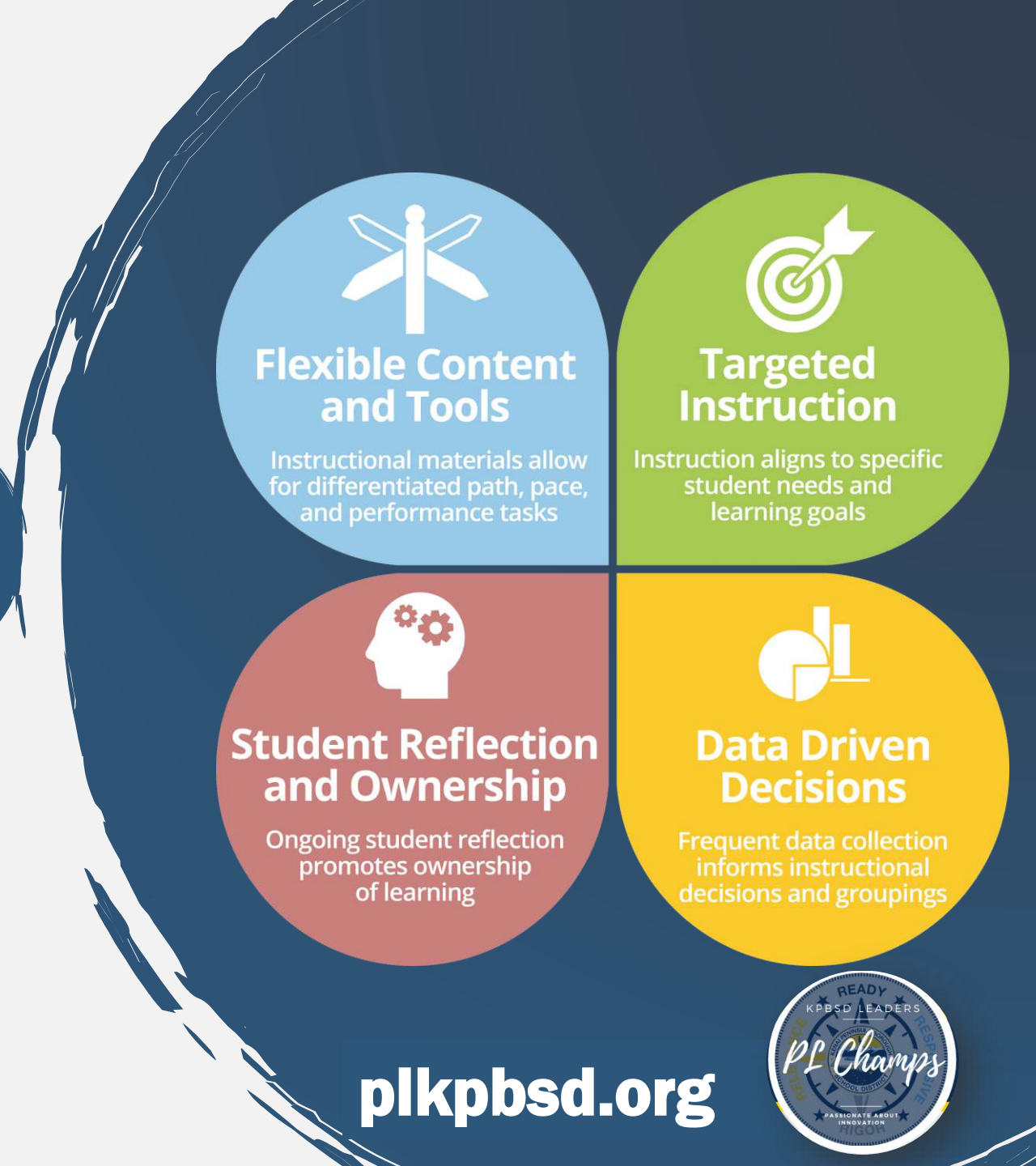


#Ready #Rigor
#Relevance #Responsive

plkpbsd.org



**“Where do you want your learning
to take you and how can KPBSD
help you get there?”**



plkpbsd.org



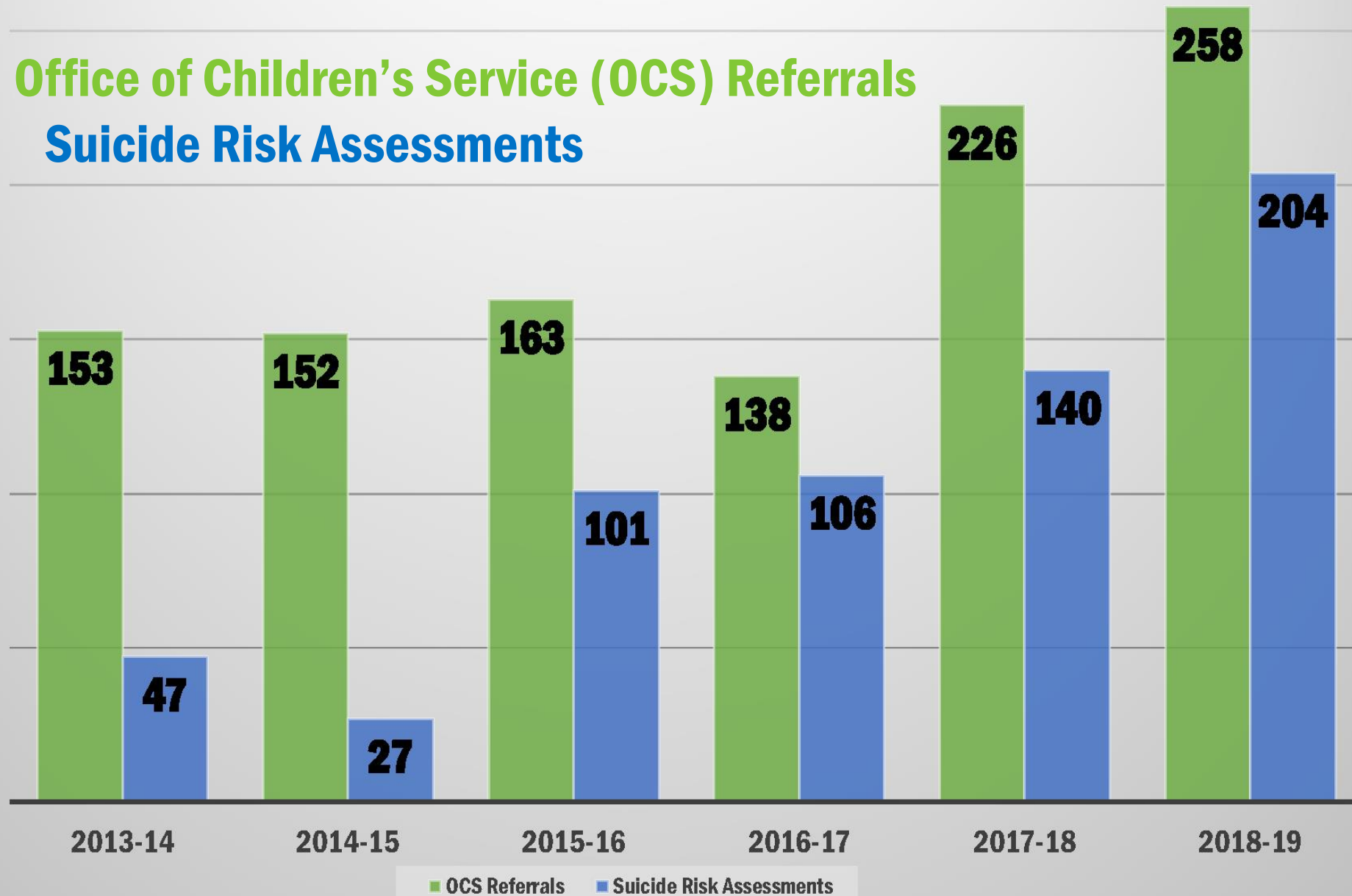
Social Emotional Learning (SEL) is...

The process through which **children and adults** acquire and effectively apply the knowledge, attitudes, and skills necessary to understand and **manage emotions**, set and achieve positive goals, feel and show **empathy** for others, establish and maintain **positive relationships**, and make **responsible decisions**.



KPBSD Assessment & Referral Comparisons 2013-2019

Office of Children's Service (OCS) Referrals Suicide Risk Assessments



Social and Emotional Learning #SEL

Ongoing Fall 2019 throughout the KPBSD

Trauma Informed Schools – Introduction to Adverse Childhood Experiences (ACES) for teachers.

Sources of Strength – Kenai Middle & Nikiski Middle-High trained! Skyview Middle & Soldotna High refresher

School-wide PBiS Refresher – Responsible, Respectful and Safe

Self-Care for Caring Professionals - KPBSD school psychologists present on importance of self-care

Crisis Response Training – School psychologists debrief traumatic incidents with school leadership

Youth Mental Health First Aid and **QPR Gatekeeper** – Parents, family, caregivers, educators & caring community members learn how to help adolescents who experience mental health or addictions challenge, or in crisis

Restorative Practices & Circles – Training to build community & promote healthy relationships—teaching social emotional and conflict resolution skills necessary to reduce conflict

Alaska Staff Development Network – Teachers supported by KPBSD to participate in virtual workshop series by co-authors Mr. Smith, Dr. Fisher, and Dr. Frey *“All Learning is Social Emotional”*

Fourth R Plus (Healthy Relationships) – Training for teachers to implement Fourth R Program

Green Dot Intervention Training - Green Dot Alaska is a project aimed at engaging individual community members prevent power-based violence in our communities.

Introduction to the CASEL Framework – Canvas Course, plus mini presentations for administrators and during staff inservices.

Social and Emotional Learning #SEL

NEW in 2019-2020

MindUp Training Site Visits and Parent Workshop – Pilot in three Title 1 Elementary schools: Mountain View, Nikiski Northstar, Sterling. Research-based curriculum utilizes latest information about the brain to dramatically improve behavior and learning for all students

Keynote - Dominique Smith, co-author of *“All Learning is Social Emotional”* provided keynote presentation to the districtwide August in-service. Focus: SEL, specifically the importance of relationships with students and practices that support or break down student relationship, and importance of personal wellness and gratitude

School Safety and Wellness Conference – Team from the School Safety Committee attended the DEED School Climate Conference in Anchorage with other school districts

Learning Walks and Virtual Workshops- Dominique Smith, co-author of *All Learning is Social Emotional* presents in January, 2020, for several days

BookTalk – *All Learning is Social Emotional* open to staff

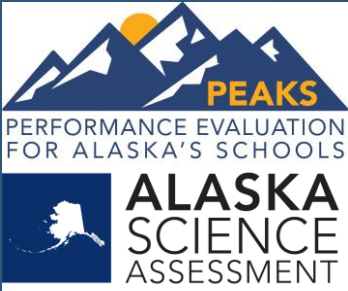
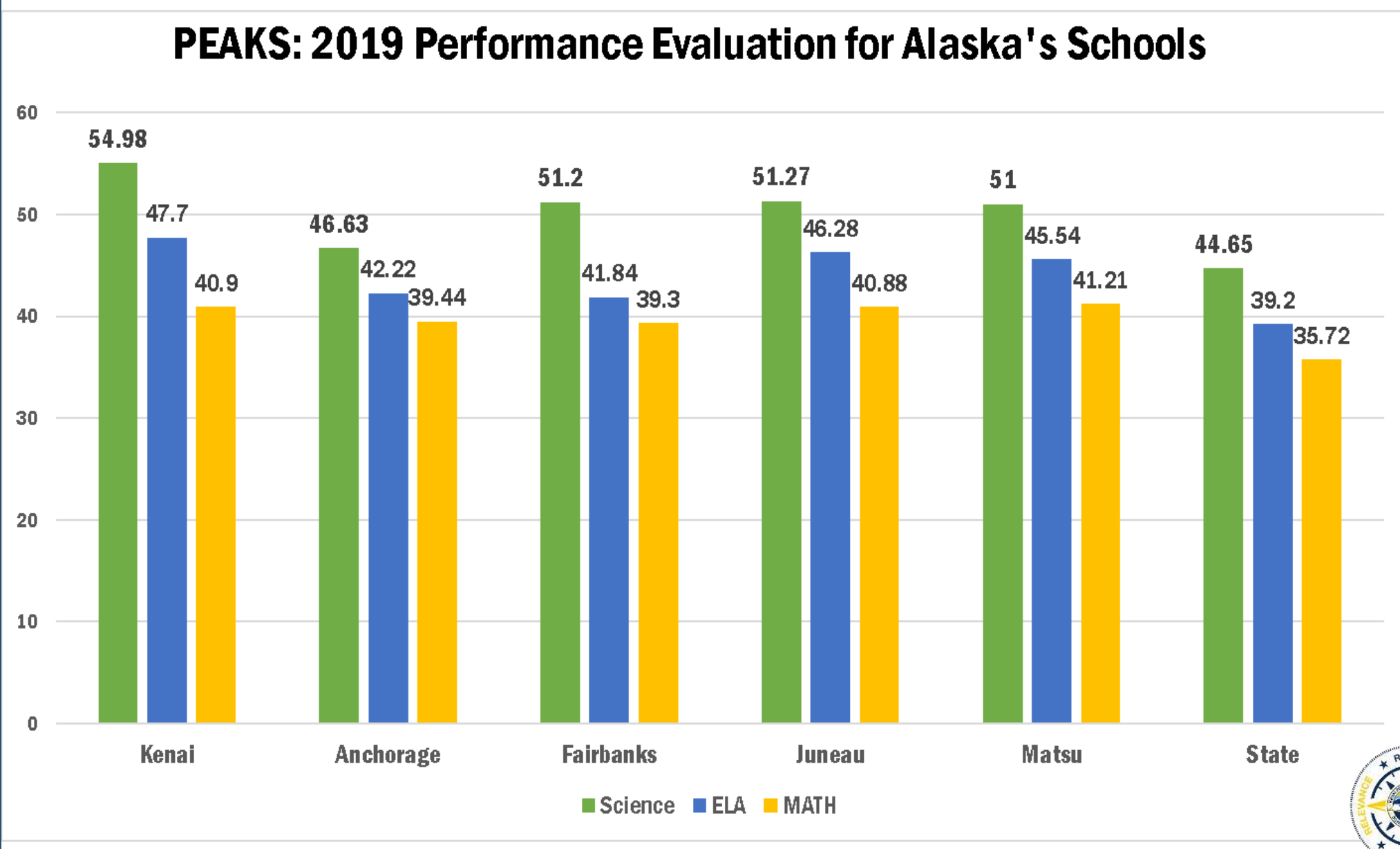
Trauma Informed Schools for Support Staff – Introduction to ACES workshop for support staff by Dr. Linda Chamberlain

Alaska Arts Education Consortium Institute - KPBSD and Alaska Art Consortium partner to offer an Arts and SEL institute at KPC June 22-26, 2020. Teachers from KPBSD and other school districts will have the opportunity to explore way to integrate arts education and SEL.

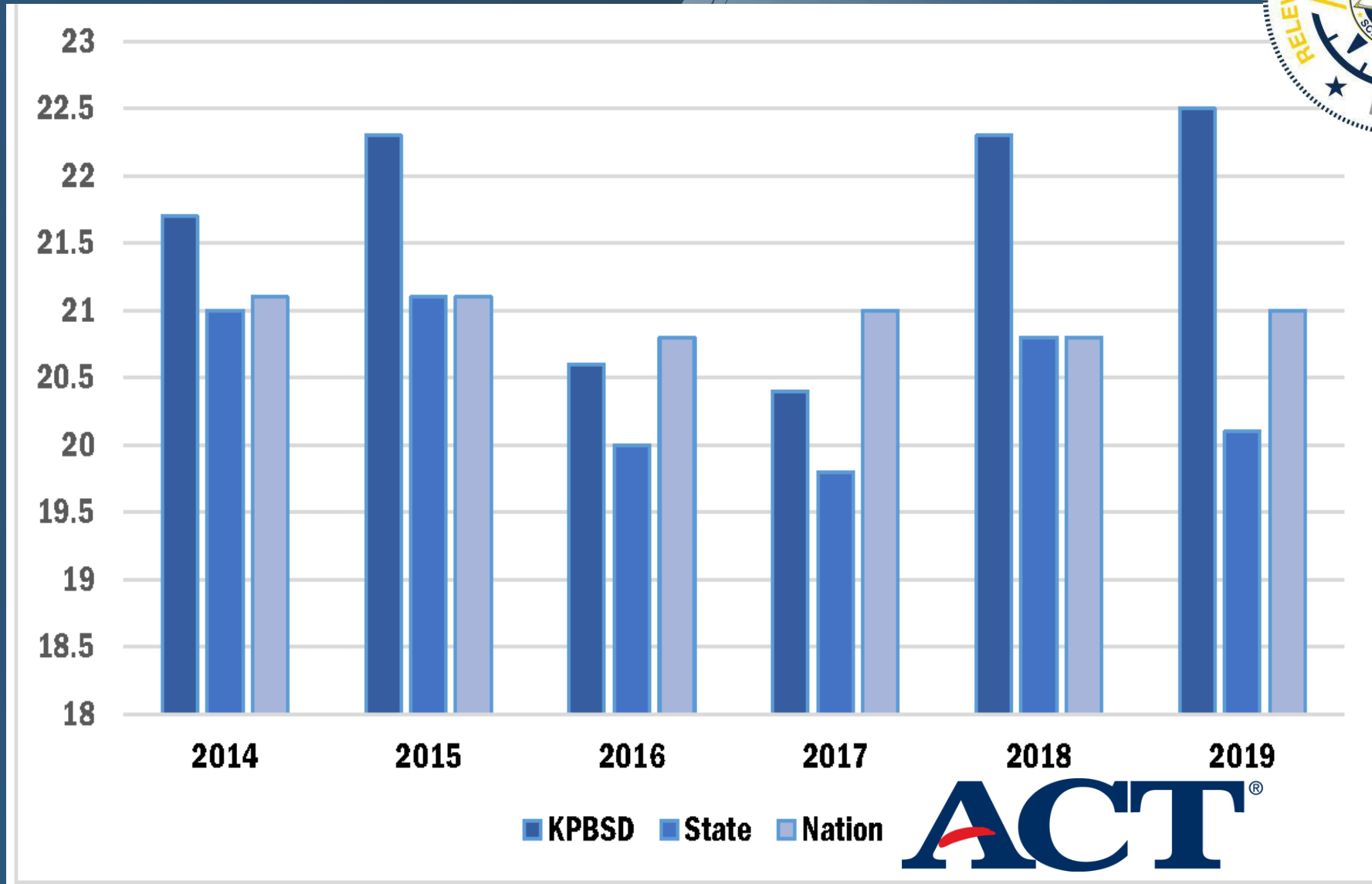
PEAKS Assessment: Science, English-Language Arts, Math

2019 PEAKS in
Alaska large
school
districts:

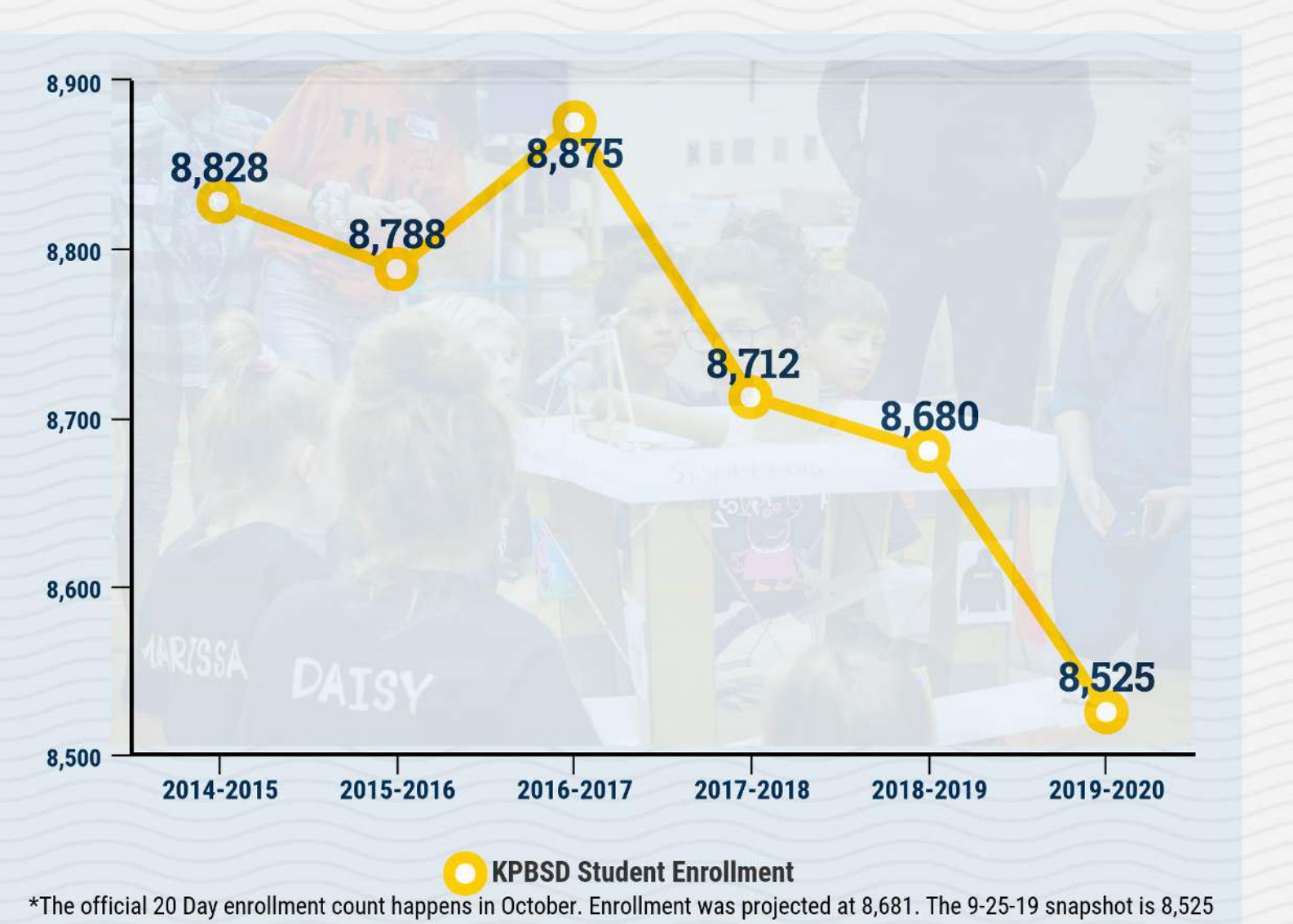
- Kenai
- Anchorage
- Fairbanks
- Juneau
- Matsu
- State



KPBSD ACT test composite score



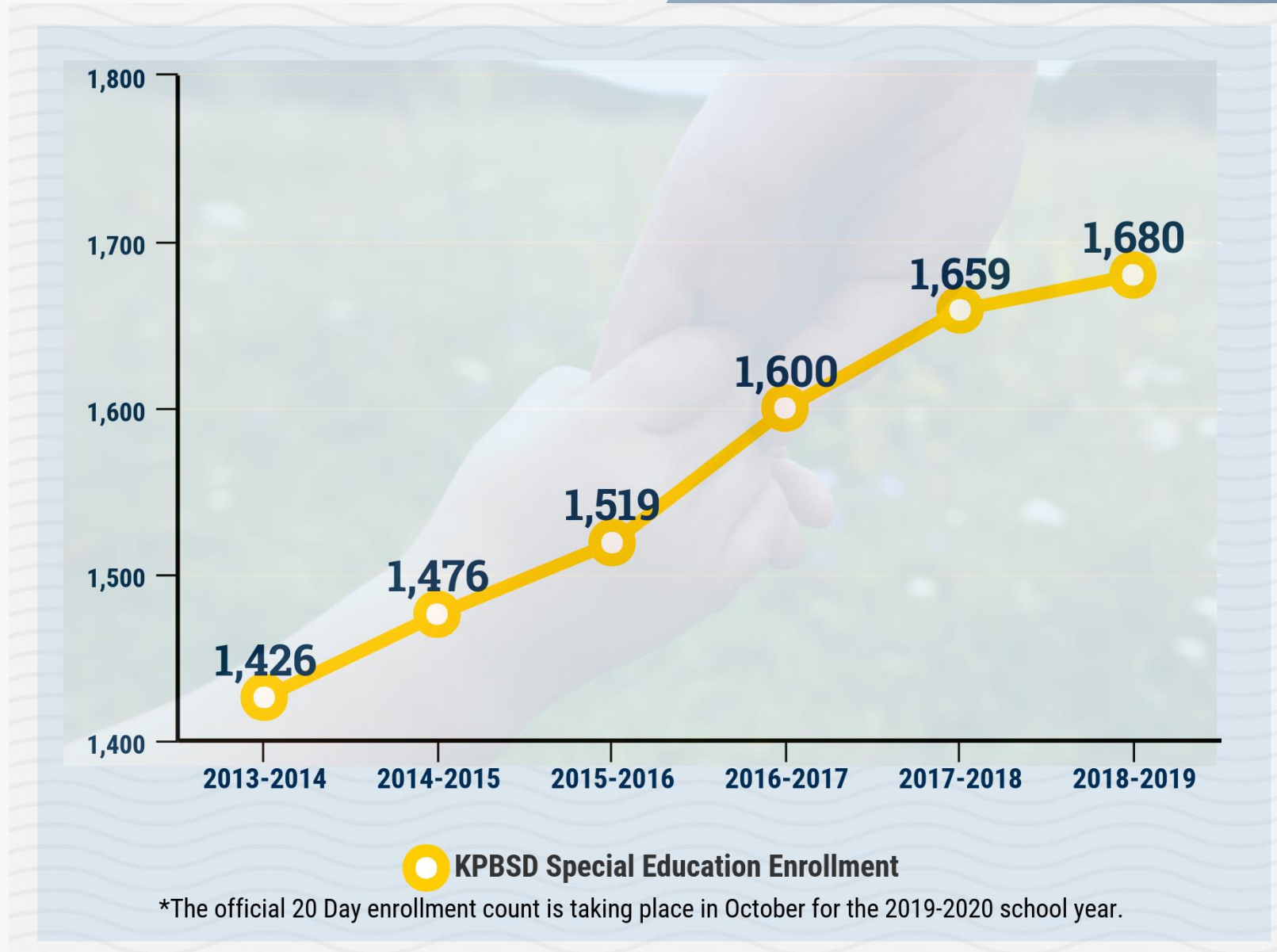
Overall student enrollment declines



**Kenai Peninsula
Borough
School District
2014-2015
to
*9-25-19
one-day count**



Students in special education rises



**Kenai Peninsula
Borough
School District
2013-2014
to
2018-2019**



BUDGET

Much more #optimism than last year



Borough proposed funding for FY21

Mayor Pierce and assembly will propose funding to the maximum allowable (cap)!



Governor proposed budget

Education
The Base Student Allocation (BSA) is flat-funded in Governor Dunleavy's proposed budget



Joint Worksessions

The Borough Assembly and Board of Education will meet about education & school funding on the peninsula



KPBSD Budget

\$2.2 million of undesignated general fund balance for FY21 budget and funding for six elementary school SEL counselors



NO proposals

The Board of Education is not proposing school closures or increases to classroom size through PTR adjustments

The Alaska Legislature

NEW Education related bills (so far!)



HB181

Mental Health education

Mandated curriculum



SB135

Health Insurance Incentives


Consumer right to shop act



HB194

School District Consolidation

From 54 to 18 districts in Alaska



SB151

Alaska Reads Act

Partial funding for Pre-K & early education programs; literacy programs; comprehensive reading policy



HB196

Alaska Performance Scholarship

Adjust awards based on recent tuition



SB136

State Tribal Compact Schools

Establishment of new public schools

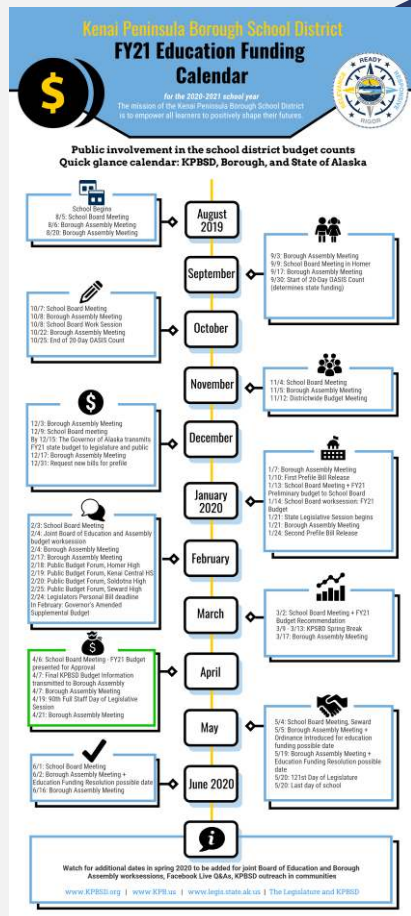
- **Building Security:** Key cards
- **Behavior Threat Assessment Process** – update and ongoing training
- **Social and Emotional (SEL) counselors** at elementary schools
- **ALICE safety training** with local and state law enforcement partners

School Safety



If you value education, be involved & connect

Digital media, regional budget meetings, community conversation and coffee dates



FY21 Budget meetings

6:00 PM

2/18: Homer High
2/19: Kenai Central
2/20: Soldotna High
2/25: Seward High

Coffee & Conversation

10:30 – 11:30 AM

1/31: Soldotna
2/21: Homer
3/20: Kenai
TBD: Seward

Data and Stories

www.KPBSD.com
@KPBSD
Facebook Live Q&A

BELIEF

WHAT DO YOU VALUE in
K-12 EDUCATION?

ACT



Talk together



Email and USPS mail



Social media & websites



In person connections



Participate in meetings, forums...

**KPBSD is #thankful
for you!**



Be the "I" in Kind!

**The mission of the Kenai Peninsula Borough
School District is to empower all learners to
positively shape their futures.**